

Devon&Devon

SURFACES

WALLPAPER  
COLLECTION 2019

30<sup>th</sup>

THIRTY YEARS  
ANNIVERSARY





## WALLPAPER COLLECTION / 236

### VITO NESTA

- 240 \_ BROADWAY
- 242 \_ EMPIRE
- 244 \_ MAJESTIC
- 246 \_ PARADISEA
- 248 \_ SAMOA
- 250 \_ BOTANICA
- 252 \_ CASABLANCA
- 254 \_ COSTARICA
- 258 \_ GIACARTA
- 262 \_ LEAF
- 264 \_ BAMBOO
- 266 \_ CHAIN
- 268 \_ KNOT
- 270 \_ NAPPINE
- 272 \_ RIO
- 274 \_ VANDEVELDE
- 278 \_ VERSACRUM
- 282 \_ WAGNER

### FRANCESCA GRECO

- 286 \_ BIRDS
- 290 \_ CARDOON
- 292 \_ RAINFOREST
- 294 \_ COROLLA
- 296 \_ LILIES
- 298 \_ PLUMES
- 300 \_ GINKO
- 304 \_ IVY

### NINA FARRÉ

- 308 \_ ARABESQ
- 312 \_ BLUE TILES
- 316 \_ FONDU
- 320 \_ SAMODE
- 322 \_ SAMODE NEGA
- 324 \_ TAPISSERIE

## GENERAL TERMS AND CONDITIONS OF SALE / 334

## VITO NESTA \_ 238

240 \_ BROADWAY

242 \_ EMPIRE

244 \_ MAJESTIC

246 \_ PARADISEA

248 \_ SAMOA

250 \_ BOTANICA

252 \_ CASABLANCA

254 \_ COSTARICA

258 \_ GIACARTA

262 \_ LEAF

264 \_ BAMBOO

266 \_ CHAIN

268 \_ KNOT

270 \_ NAPPINE

272 \_ RIO

274 \_ VANDEVELDE

278 \_ VERSACRUM

282 \_ WAGNER

## FRANCESCA GRECO \_ 284

286 \_ BIRDS

290 \_ CARDOON

292 \_ RAINFOREST

294 \_ COROLLA

296 \_ LILIES

298 \_ PLUMES

300 \_ GINKO

304 \_ IVY

## NINA FARRÉ \_ 306

308 \_ ARABESQ

312 \_ BLUE TILES

316 \_ FONDU

320 \_ SAMODE

322 \_ SAMODE NEGA

324 \_ TAPISSERIE

Wallpaper Collection è la collezione di carte da parati realizzata in collaborazione con i designer Francesca Greco, Nina Farré e Vito Nesta. Una proposta originale, elegante, ricca e versatile, in perfetta sintonia con la filosofia del brand, pensata per decorare case private, progetti residenziali e ricercati boutique hotels. La Devon&Devon Wallpaper Collection si adatta con equilibrio a molteplici contesti, suggerendo rigorose ambientazioni classiche o squisitamente eclettiche.

## WALLPAPER COLLECTION

The Wallpaper Collection is produced in cooperation with designers Francesca Greco, Nina Farré and Vito Nesta. Created to decorate private houses, residential projects and exclusive boutique hotels. This original, elegant and versatile proposal is perfectly aligned with the philosophy of the brand.

The Devon&Devon Wallpaper Collection adapts seamlessly to a wide variety of different contexts, suggesting interior ambiances from the classical to the exquisitely eclectic.

# VITO NESTA



Pugliese di origine e milanese di adozione, Vito Nesta si laurea in interior design a Firenze. Designer, art director, arredatore e artigiano, è animato da curiosità per le culture più diverse e include il viaggio come una costante della sua formazione. Il suo pensiero progettuale si nutre di graphic design, architettura, fotografia e pittura. Collabora con Riva 1920, Les Ottomans, Karpeta, Effetto Vetro, Texturae, Cadriano, Secondo Me Gallery, My Home Collection e Fratelli Majello.

Born in Puglia but adopted a long time ago by the city of Milan, Vito Nesta graduated in interior design in Florence. Designer, art director, interior decorator and craftsman, Vito Nesta is animated by an enormous curiosity for the vast variety of foreign cultures. Travel is the constant of his training. His work as a designer is inspired by graphic design, architecture, photography and painting. He collaborates with brands such as Riva 1920, Les Ottomans, Karpeta, Effetto Vetro, Texturae, Cadriano, Secondo Me Gallery, My Home Collection and Fratelli Majello.

240 \_ BROADWAY  
242 \_ EMPIRE  
244 \_ MAJESTIC  
246 \_ PARADISEA  
248 \_ SAMOA  
250 \_ BOTANICA  
252 \_ CASABLANCA  
254 \_ COSTARICA  
258 \_ GIACARTA  
262 \_ LEAF  
264 \_ BAMBOO  
266 \_ CHAIN  
268 \_ KNOT  
270 \_ NAPPINE  
272 \_ RIO  
274 \_ VANDEVELDE  
278 \_ VERSACRUM  
282 \_ WAGNER

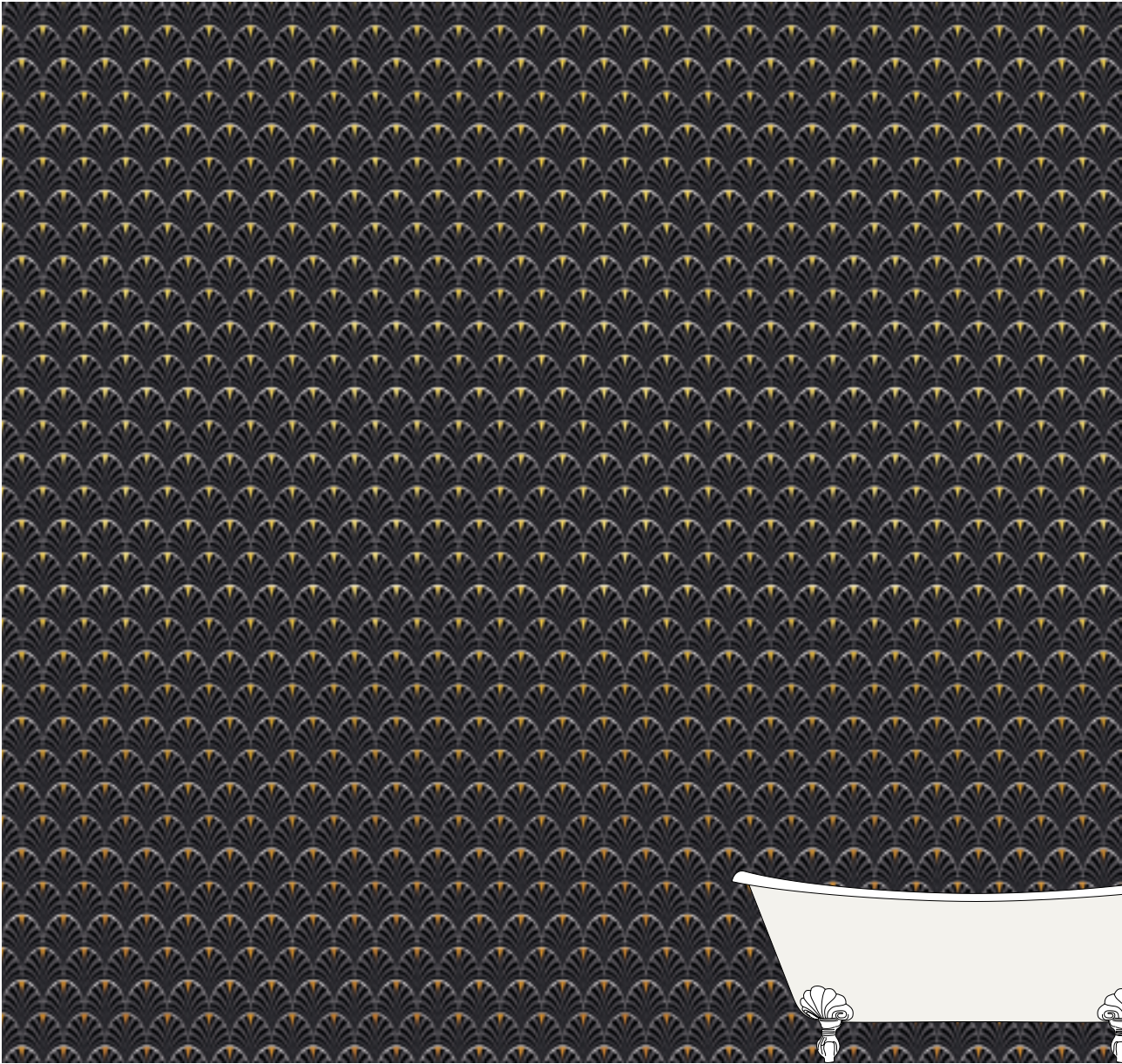
BROADWAY



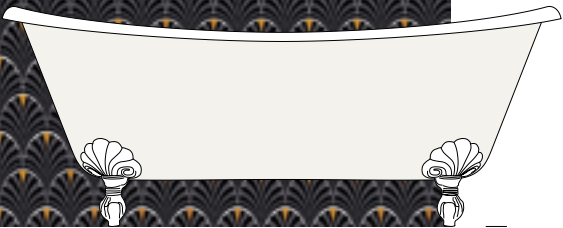
◀ 1:10

BROADWAY GREY  
VNBROG

BROADWAY BLACK - VNBROB



◀ 1:50



mm L: 4230 x H: 4000

WALLPAPER COLLECTION - VITO NESTA







EMPIRE



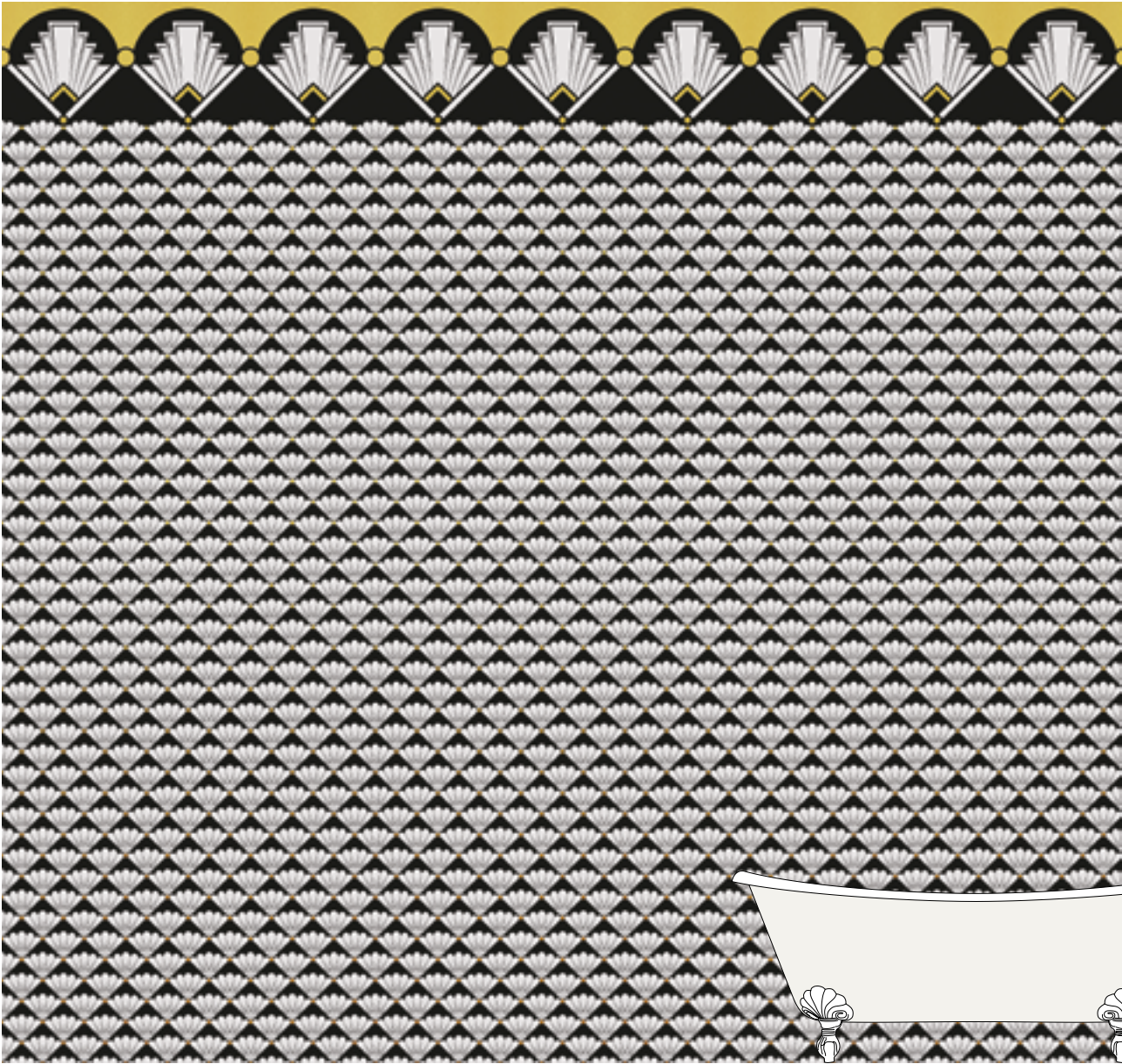
EMPIRE ICE  
VNEMPI



EMPIRE LUXURY  
VNEMPL

◀ 1:10

EMPIRE BLACK&WHITE - VNEMPB



◀ 1:50

mm L: 4230 x H: 4000

WALLPAPER COLLECTION - VITO NESTA







MAJESTIC



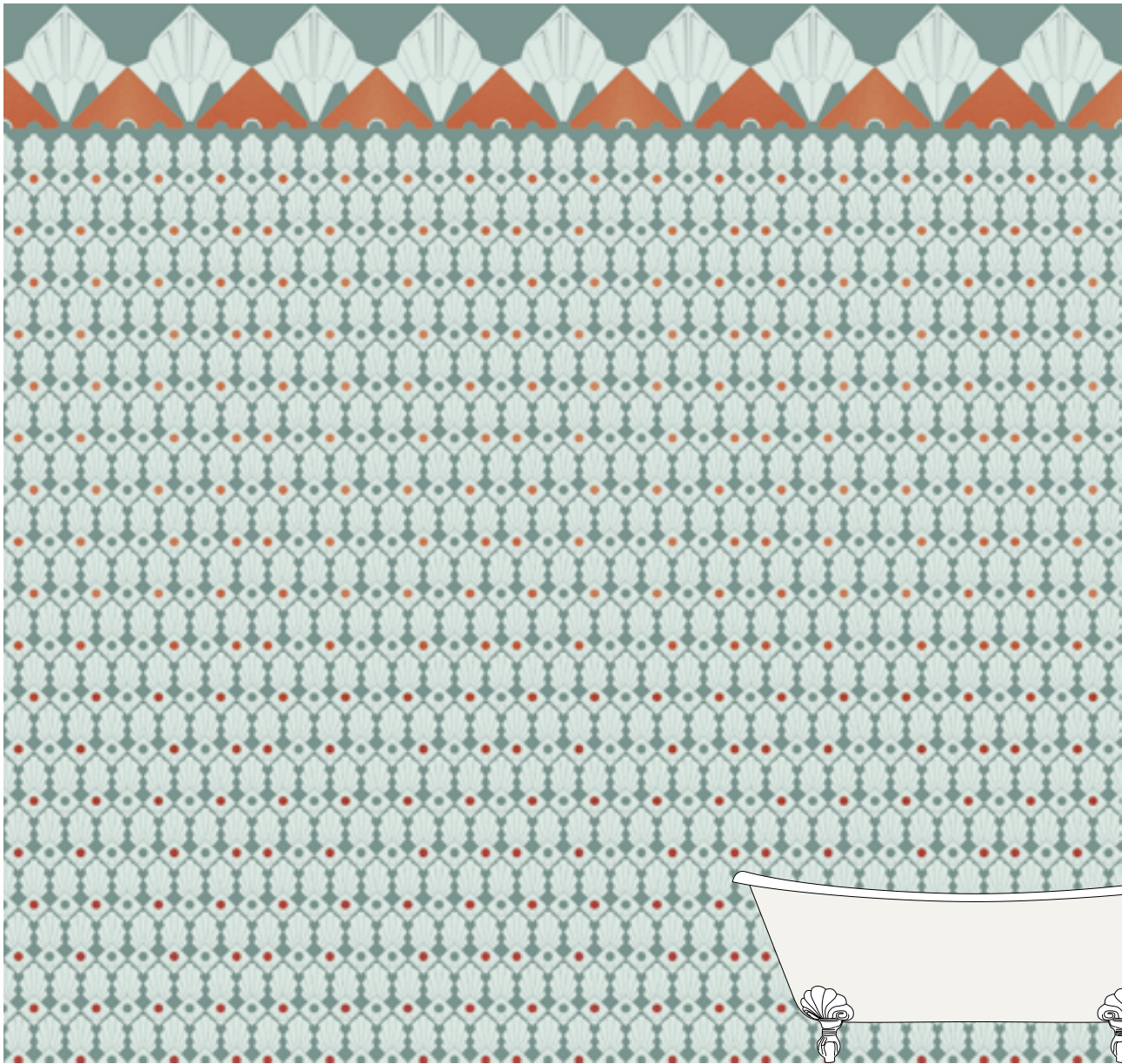
MAJESTIC GOLD  
VNMAJG



MAJESTIC WINTER  
VNMAJW

◀ 1:10

MAJESTIC COPPER - VNMAJC



◀ 1:50

mm L: 4230 x H: 4000

WALLPAPER COLLECTION - VITO NESTA







PARADISEA



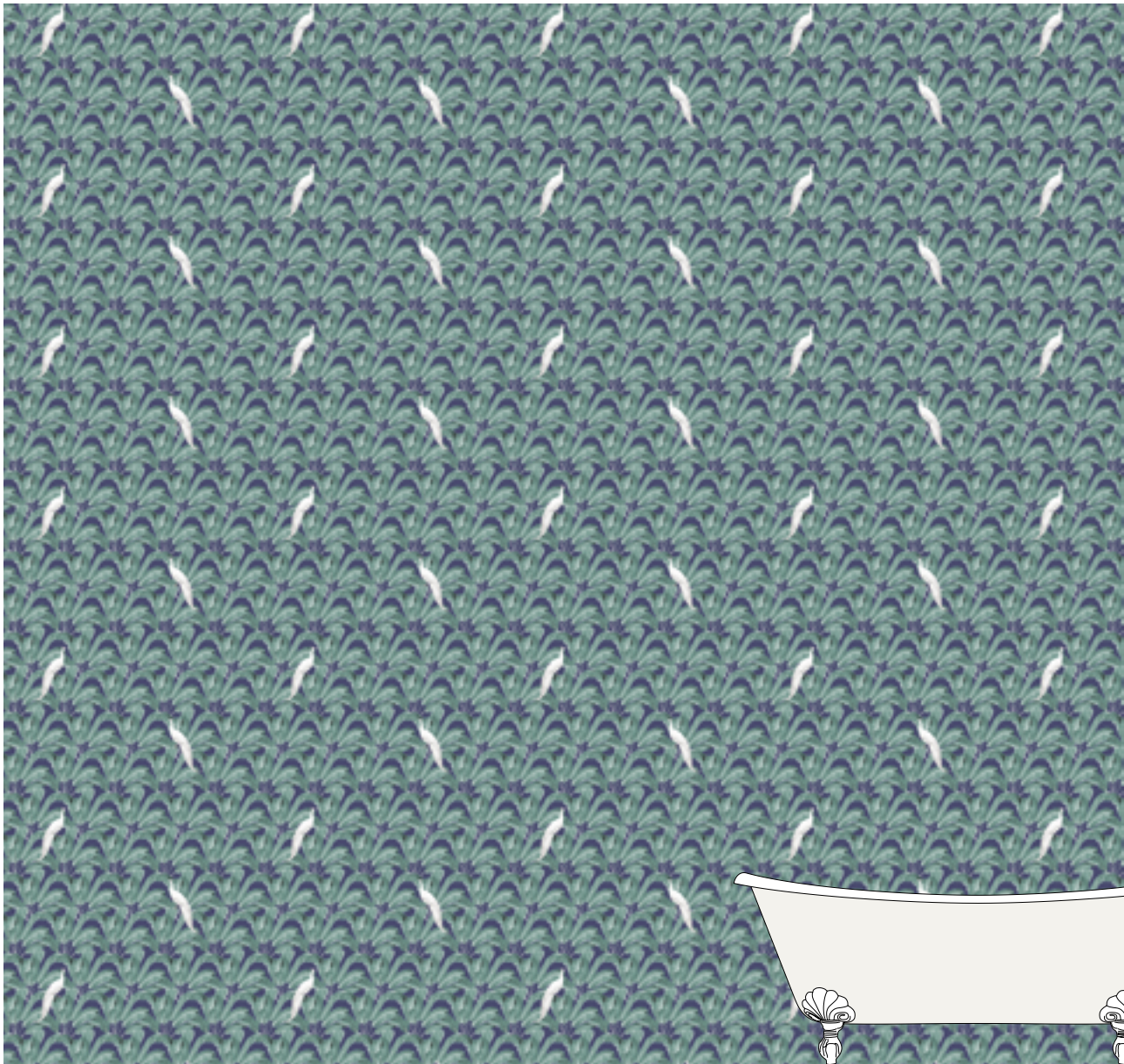
PARADISEA RED  
VNPARR



PARADISEA SOFT  
VNPARS

◀ 1:10

PARADISEA GREEN - VNPARG



◀ 1:50

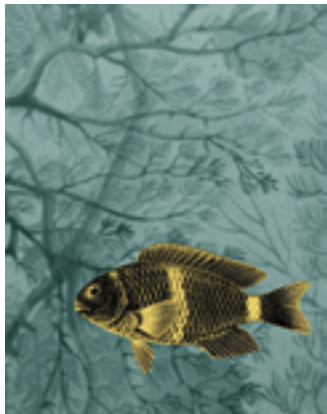
mm L: 4230 x H: 4000

WALLPAPER COLLECTION - VITO NESTA





SAMOA



SAMOA GOLD  
VNSAMG



SAMOA RED  
VNSAMR

◀ 1:10

SAMOA BLACK&WHITE - VNSAMB



◀ 1:50

mm L: 4230 x H: 4000

WALLPAPER COLLECTION - VITO NESTA





# BOTANICA



BOTANICA DARK  
VNBOTD



BOTANICA GREY  
VNBOTG



BOTANICA MAKEUP  
VNBOTM



BOTANICA WINE  
VNBOTW

◀ 1:10

BOTANICA BLACK&WHITE - VNBOTB



◀ 1:50

mm L: 4230 x H: 4000

WALLPAPER COLLECTION - VITO NESTA







## CASABLANCA



CASABLANCA BLACK&WHITE  
VNCASB



CASABLANCA CANVAS  
VNCASC



CASABLANCA COFFE  
VNCASCO

◀ 1:10

## BOTANICA ANCIENT - VNCASA



◀ 1:50

mm L: 4230 x H: 4000

WALLPAPER COLLECTION - VITO NESTA





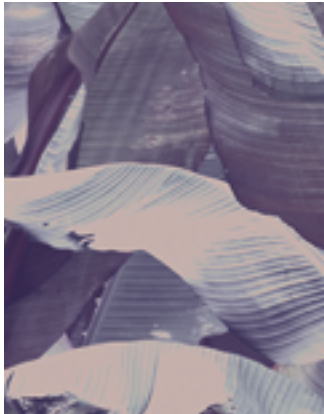
COSTARICA



COSTARICA GREEN  
VNCOSG



COSTARICA PETROL  
VNCOSP



COSTARICA PURPLE  
VNCOSPU



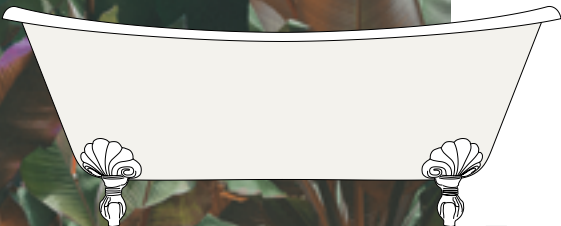
COSTARICA WINE  
VNCOSW

◀ 1:10

COSTARICA DUST - VNCOSD



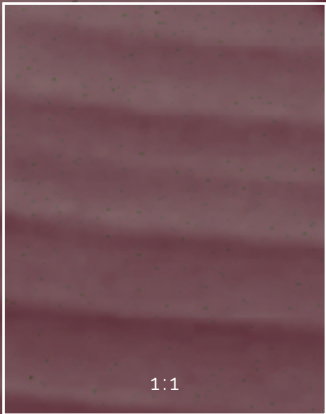
◀ 1:50



mm L: 4230 x H: 4000

WALLPAPER COLLECTION - VITO NESTA





COSTARICA WINE  
VNCOSW

COSTARICA







COSTARICA WINE



GIACARTA



GIACARTA NIGHT  
VNGIAN



GIACARTA NOON  
VNGIANO



GIACARTA SUNSET  
VNGIAS

◀ 1:10

GIACARTA GLOAMING - VNGIAG



◀ 1:50

mm L: 4230 x H: 4000

WALLPAPER COLLECTION - VITO NESTA





1:1

GIACARTA NIGHT  
VNGIAN











## LEAF



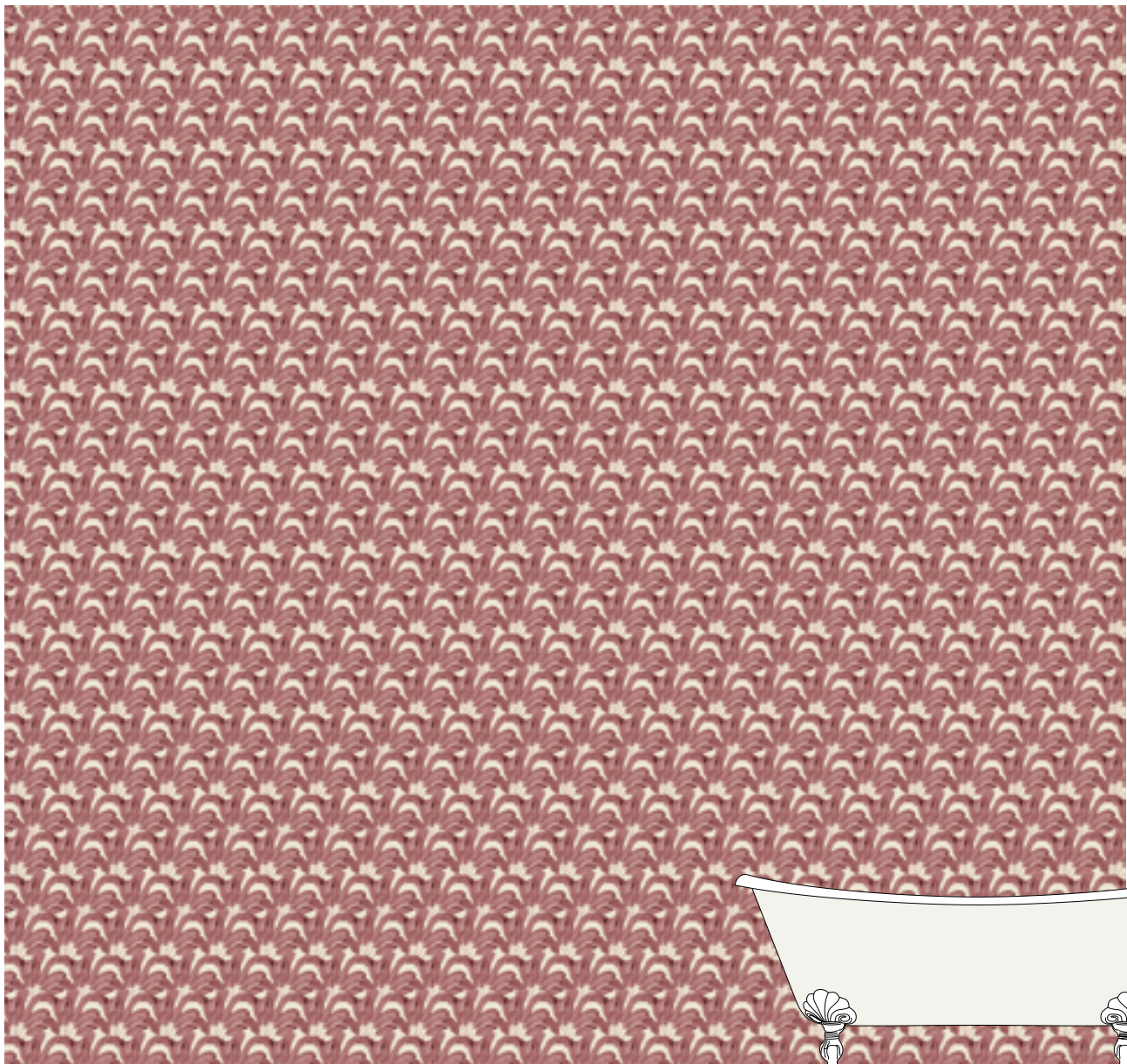
LEAF SAGE  
VNLEAS



LEAF YELLOW  
VNLEAY

◀ 1:10

LEAF RED - VNLEAR



◀ 1:50

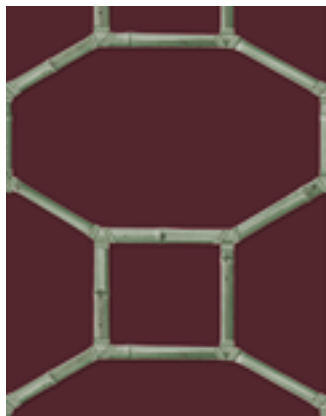
mm L: 4230 x H: 4000

WALLPAPER COLLECTION - VITO NESTA

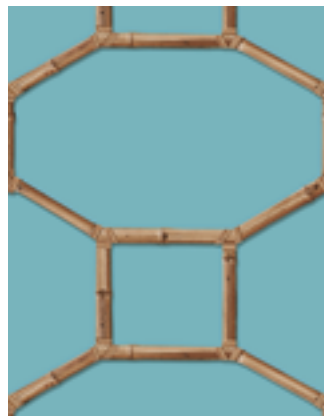




## BAMBOO



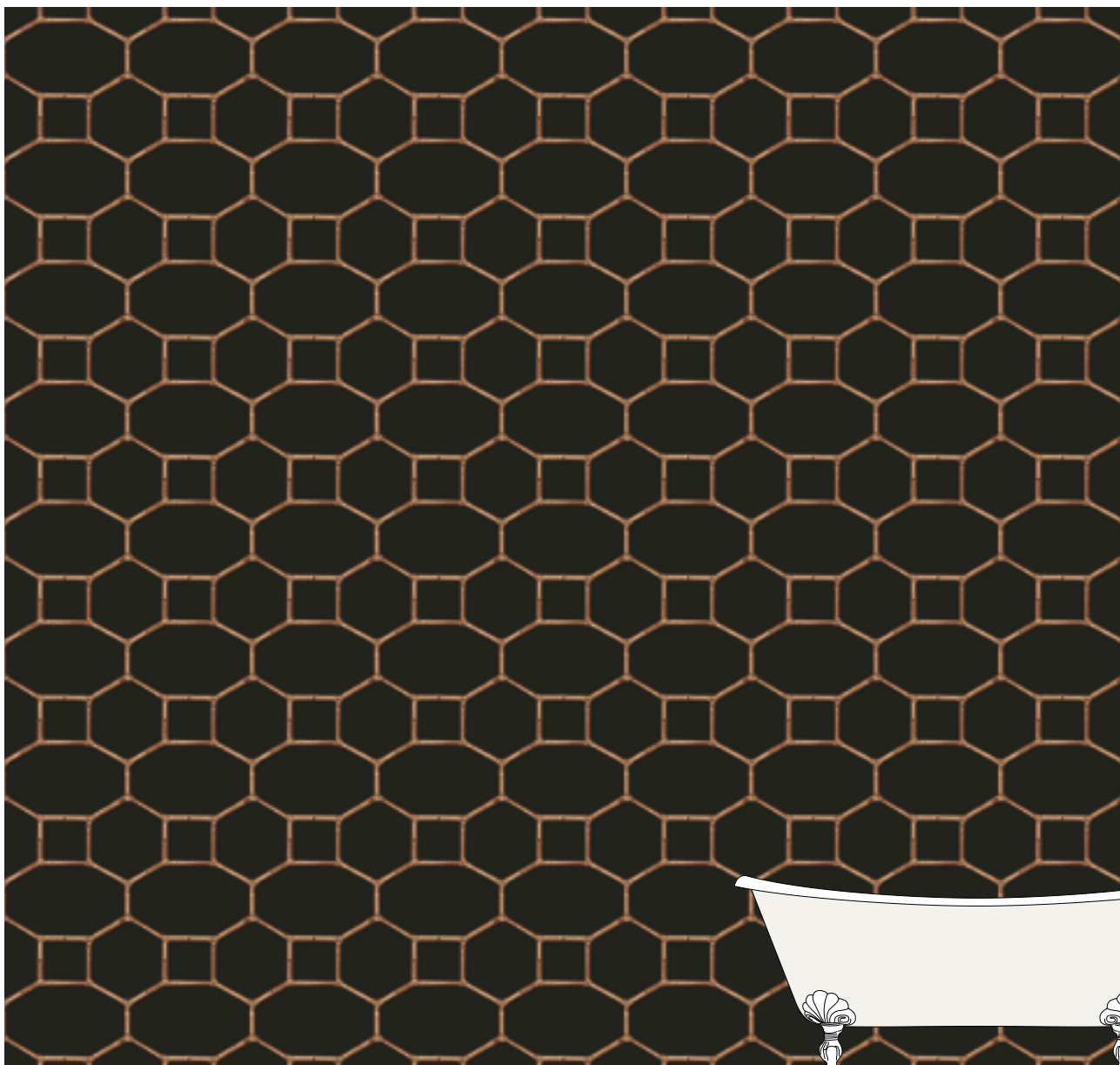
BAMBOO RED  
VNBAMR



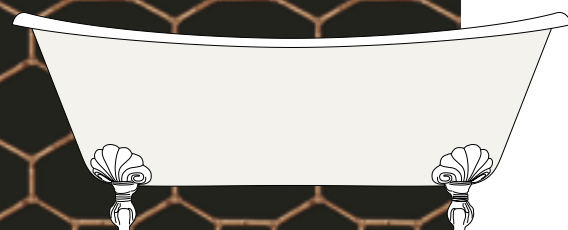
BAMBOO SKY  
VNBAMS

◀ 1:10

BAMBOO BLACK - VNBAMB



◀ 1:50

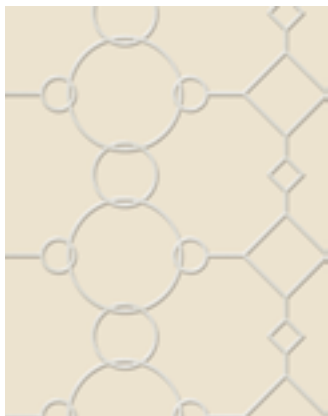


mm L: 4230 x H: 4000





CHAIN



CHAIN IVORY  
VNCHAI



CHAIN MUD  
VNCHAM



CHAIN RED  
VNCHAR

◀ 1:10

CHAIN GREEN - VNCHAG



◀ 1:50

mm L: 4230 x H: 4000

WALLPAPER COLLECTION - VITO NESTA





## KNOT



KNOT WHITE&BLACK  
VNKNOW



KNOT RED  
VNKNOR



KNOT BLUE  
VNKNOB

◀ 1:10

KNOT CREAM - VNKNOC



◀ 1:50

mm L: 4230 x H: 4000





# NAPPINE



NAPPINE GREEN  
VNNAPGR



NAPPINE RED  
VNNAPR

◀ 1:10

## NAPPINE GOLD - VNNAPG



◀ 1:50

mm L: 4230 x H: 4000

WALLPAPER COLLECTION - VITO NESTA







# RIO



RIO GOLD  
VNRIOG



RIO SEPIA  
VNRIOS

◀ 1:10

RIO COPPER - VNRIOC



◀ 1:50

mm L: 4230 x H: 4000

WALLPAPER COLLECTION - VITO NESTA







VANDEVELDE



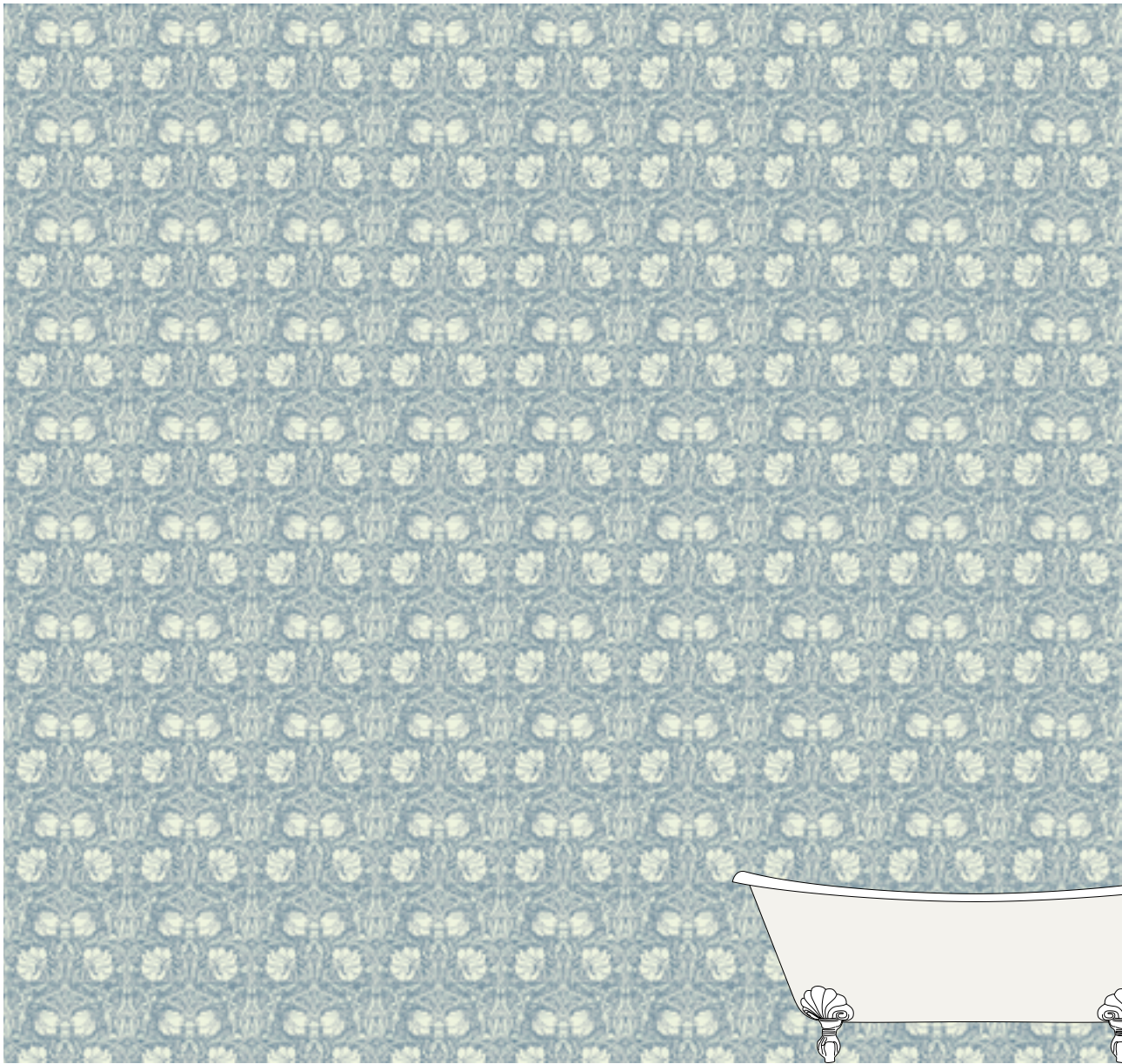
VANDEVELDE ECRU  
VNVANE



VANDEVELDE RED  
VNVANR

◀ 1:10

VANDEVELDE COLD - VNVANC



◀ 1:50

mm L: 4230 x H: 4000

WALLPAPER COLLECTION - VITO NESTA





1:1

VANDEVELDE ECRU

VNVANE









# VERSACRUM



VERSACRUM ICE  
VNVERI



VERSACRUM SUMMER  
VNVERS

◀ 1:10

VERSACRUM COFFEE - VNVERC



◀ 1:50

mm L: 4230 x H: 4000

WALLPAPER COLLECTION - VITO NESTA



1:1

VERSACRUM ICE  
VNVERI











## WAGNER



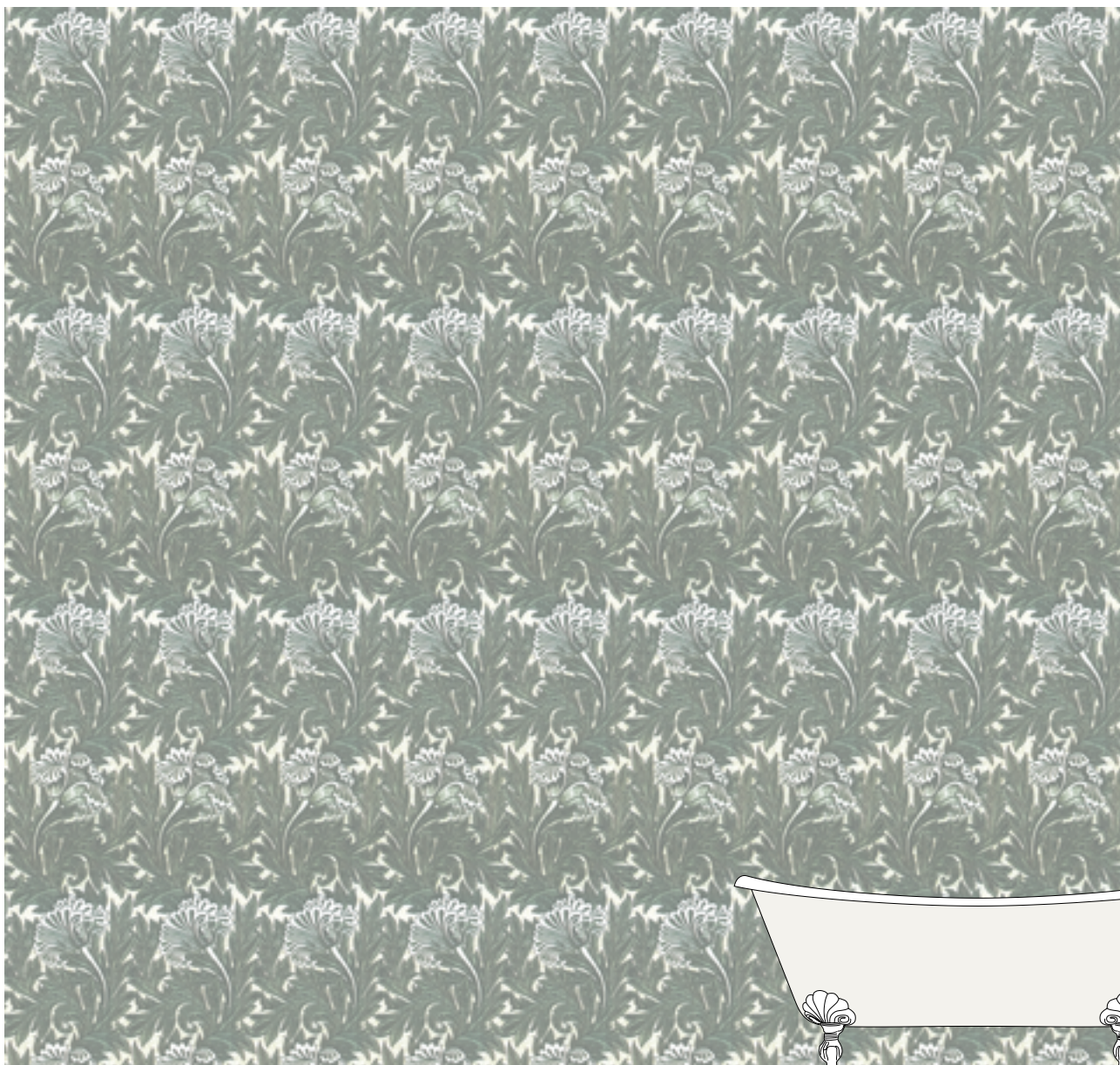
WAGNER ICE  
VNWAGI



WAGNER SOFT  
VNWAGS

◀ 1:10

WAGNER DUST - VNWAGD



◀ 1:50

mm L: 4230 x H: 4000

WALLPAPER COLLECTION - VITO NESTA





# FRANCESCA GRECO



Francesca Greco, pittrice e disegnatrice, dopo aver studiato arte e letteratura, inizia a collaborare con editori italiani ed esteri: i suoi libri vengono pubblicati in molti paesi, dagli Stati Uniti alla Cina. La sua produzione artistica spazia dalla pittura alla realizzazione di sculture e giochi in legno, dal design di tessuti, alla ceramica. Nel suo studio crea innumerevoli oggetti poetici, con carattere e identità propri: solo pezzi unici. Nata a Foligno, vive e lavora fra Umbria e Toscana.

A painter and illustrator, Francesca Greco began working with both Italian and international publishers after studying art and literature, her books are published in many countries from the United States to China. Her artistic catalogue ranges from painting to sculpture and to wooden games, and from the design of fabrics to ceramics. In her atelier, she creates countless poetic objects, each with its own character and identity: purely unique items. Born in Foligno, she lives and works between Umbria and Tuscany.



286	_	BIRDS
290	_	CARDOON
292	_	RAINFOREST
294	_	COROLLA
296	_	LILIES
298	_	PLUMES
300	_	GINKO
304	_	IVY

## BIRDS



BIRDS 2  
FGBIR2



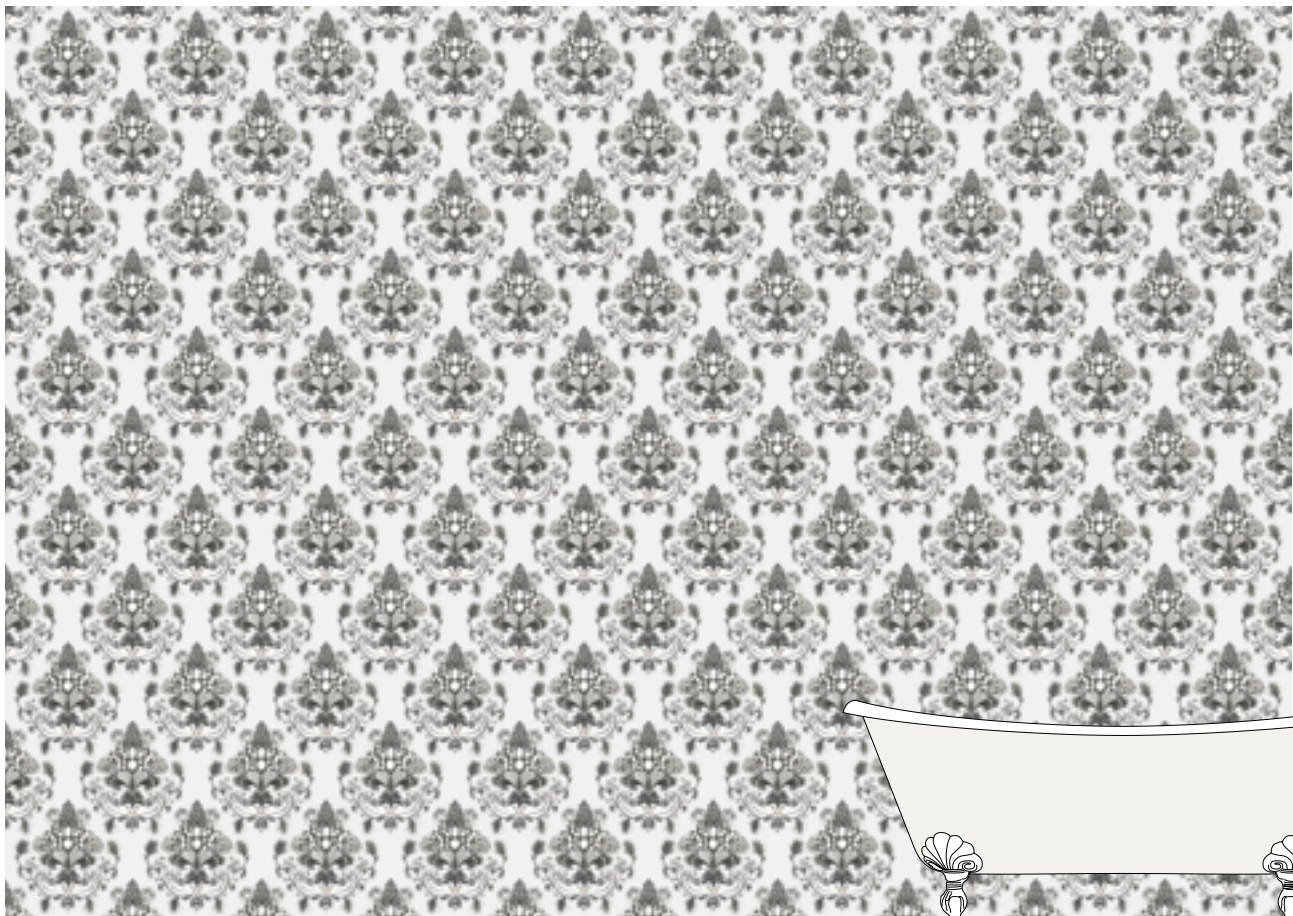
BIRDS 3  
FGBIR3



BIRDS 4  
FGBIR4

◀ 1:10

BIRDS 1 - FGBIR1



◀ 1:50

mm L: 4230 x H: 3000

WALLPAPER COLLECTION - FRANCESCA GRECO





1:1

BIRDS 4  
FGBIR4











# CARDOON



CARDOON 2  
FGCAR2



CARDOON 3  
FGCAR3

◀ 1:10

CARDOON 1 - FGCA1



◀ 1:50

mm L: 4230 x H: 3000

WALLPAPER COLLECTION - FRANCESCA GREGO







# RAINFOREST



RAINFOREST 2  
FGRAI2



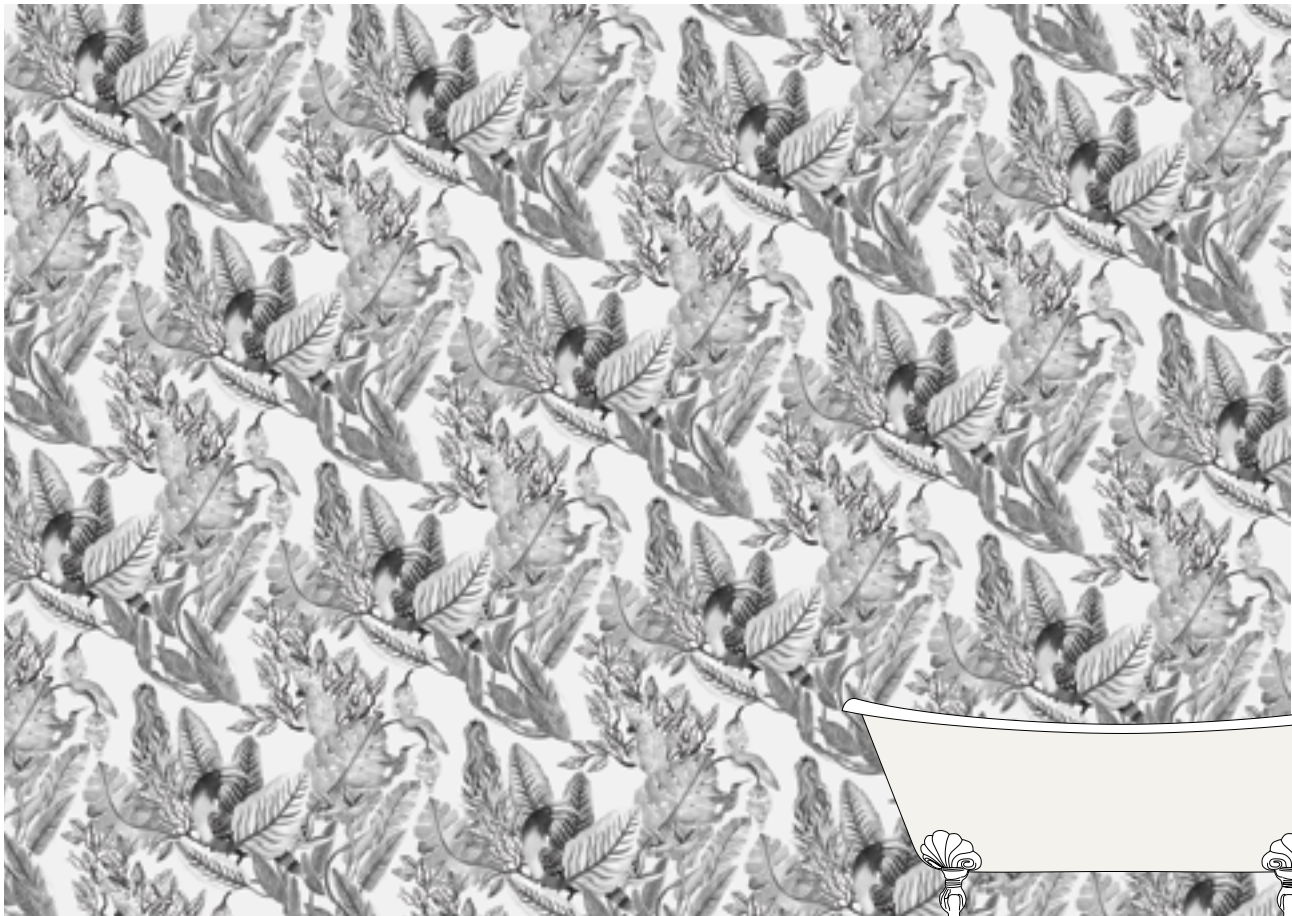
RAINFOREST 3  
FGRAI3



RAINFOREST 4  
FGRAI4

◀ 1:10

RAINFOREST 1 - FGRAI1



◀ 1:50

mm L: 4230 x H: 3000

WALLPAPER COLLECTION - FRANCESCA GRECO







COROLLA



COROLLA 2  
FGCOR2



COROLLA 3  
FGCOR3



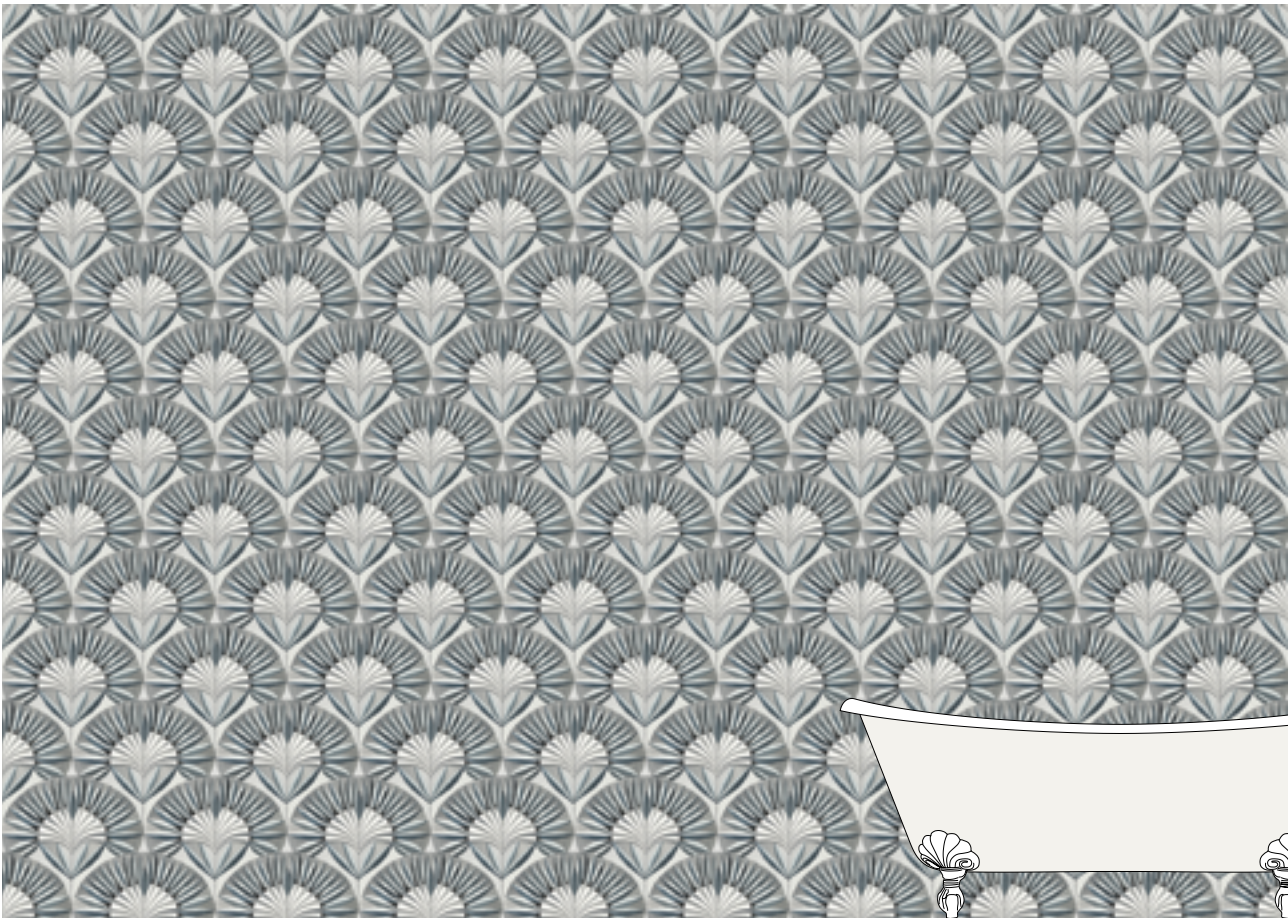
COROLLA 4  
FGCOR4



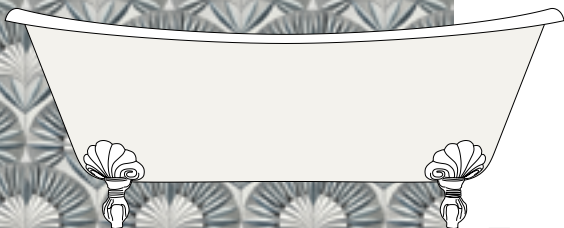
COROLLA 5  
FGCOR5

◀ 1:10

COROLLA 1 - FGCOR1



◀ 1:50



mm L: 4230 x H: 3000

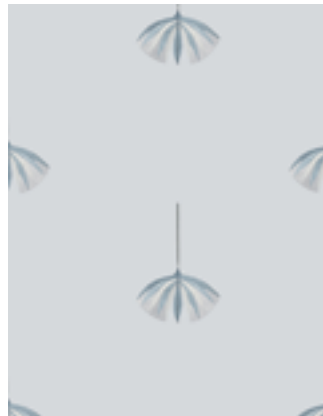




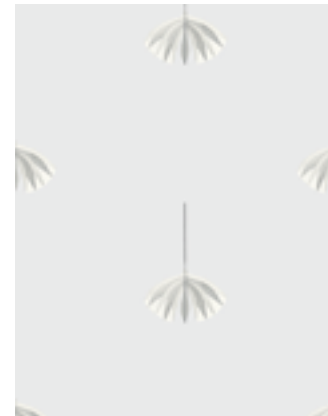
## LILIES



LILIES 2  
FGLIL2



LILIES 3  
FGLIL3



LILIES 4  
FGLIL4

◀ 1:10

LILIES 1 - FGLIL1



◀ 1:50

mm L: 4230 x H: 3000

WALLPAPER COLLECTION - FRANCESCA GREGO





# PLUMES



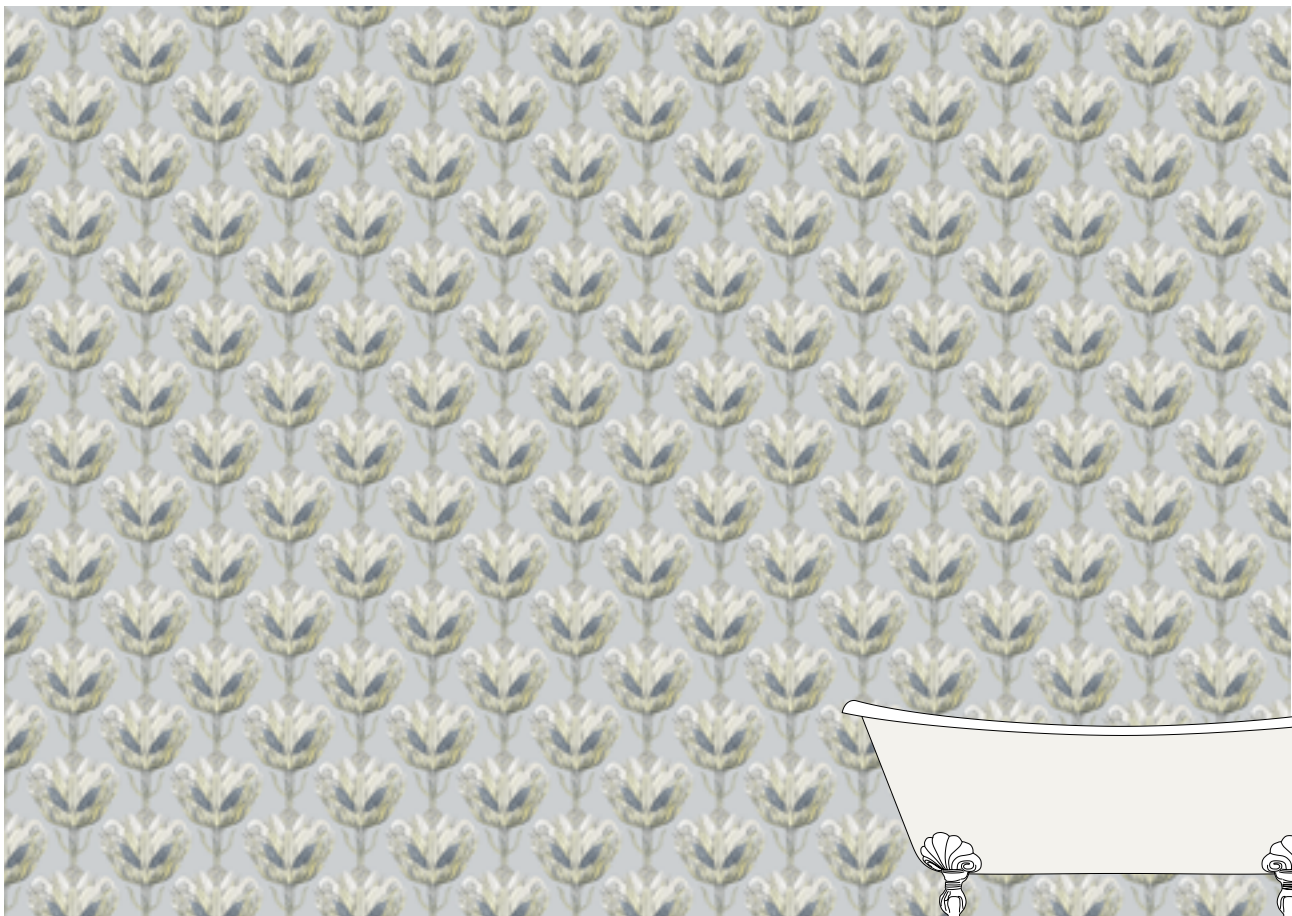
PLUMES 2  
FGPLU2



PLUMES 3  
FGPLU3

◀ 1:10

PLUMES 1 - FGPLU1



◀ 1:50

mm L: 4230 x H: 3000

WALLPAPER COLLECTION - FRANCESCA GREGO







GINKO



GINKO 2  
FGGIN2



GINKO 3  
FGGIN3



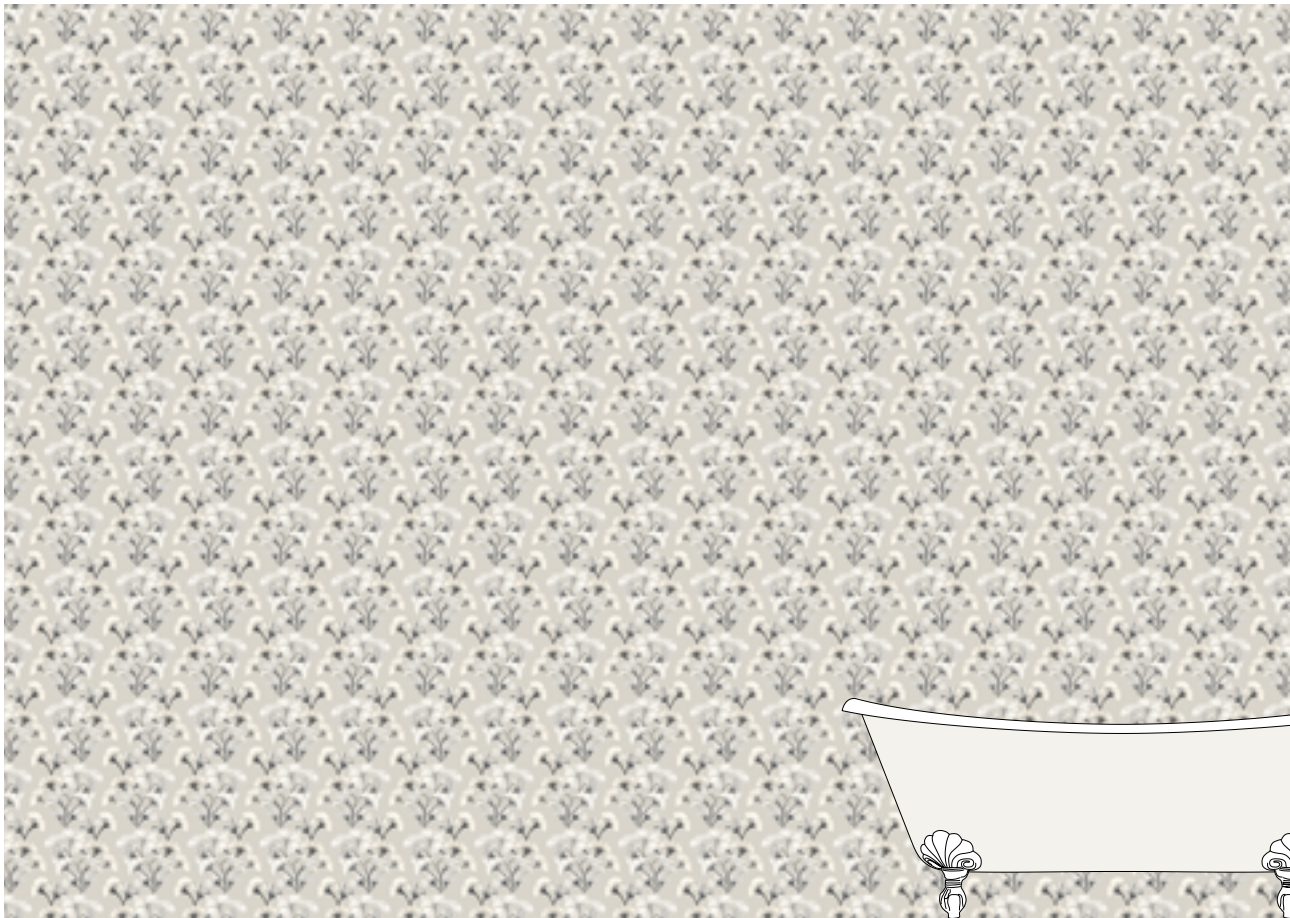
GINKO 4  
FGGIN4



GINKO 5  
FGGIN5

◀ 1:10

GINKO 1 - FGGIN1



◀ 1:50

mm L: 4230 x H: 3000







# GINKO



GINKO 7  
FGGIN7



GINKO 8  
FGGIN8



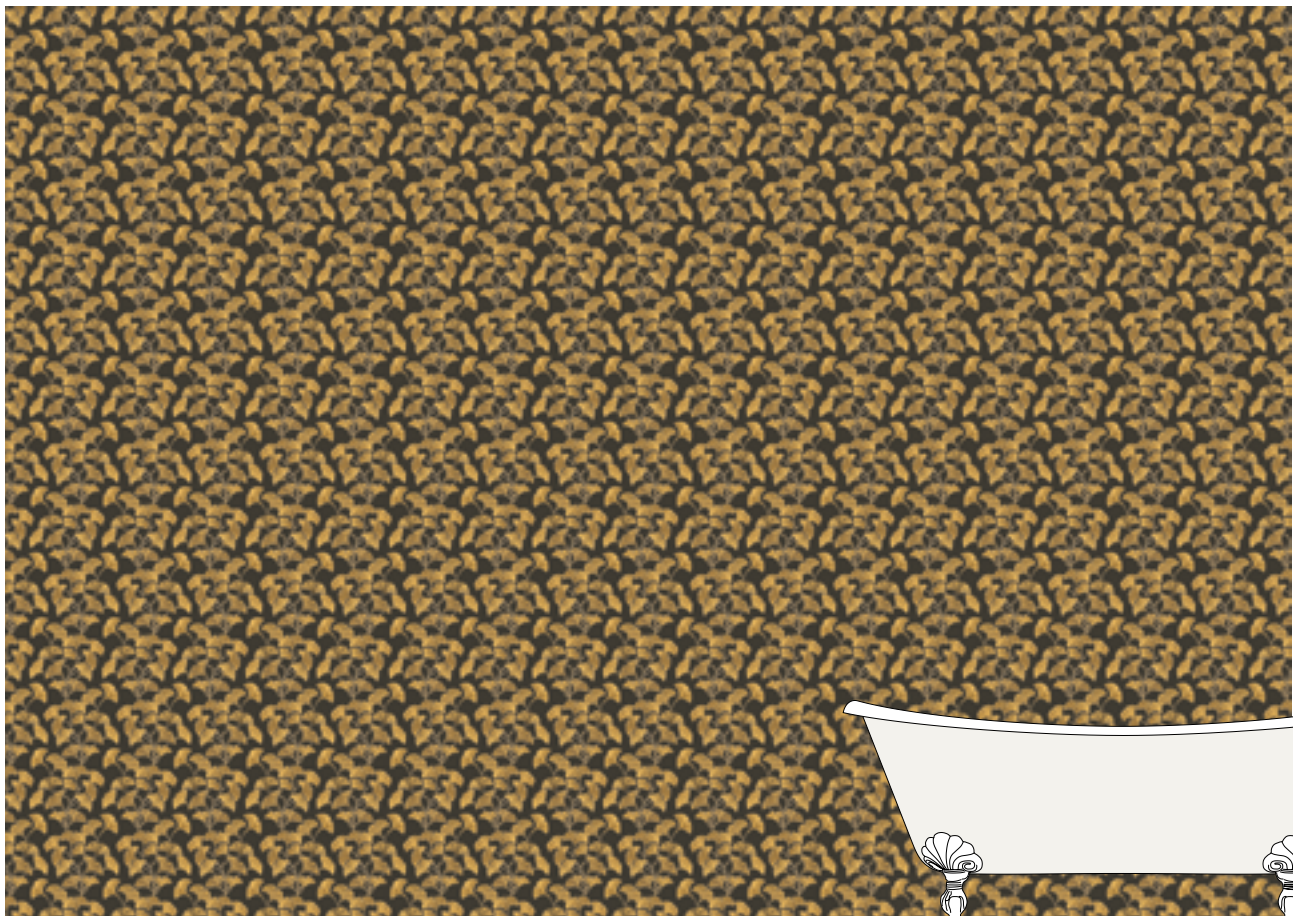
GINKO 9  
FGGIN9



GINKO 10  
FGGIN10

◀ 1:10

GINKO 6 - FGGIN6



◀ 1:50

mm L: 4230 x H: 3000

WALLPAPER COLLECTION - FRANCESCA GRECO





1:1

GINKO 8  
FGGIN8



# IVY



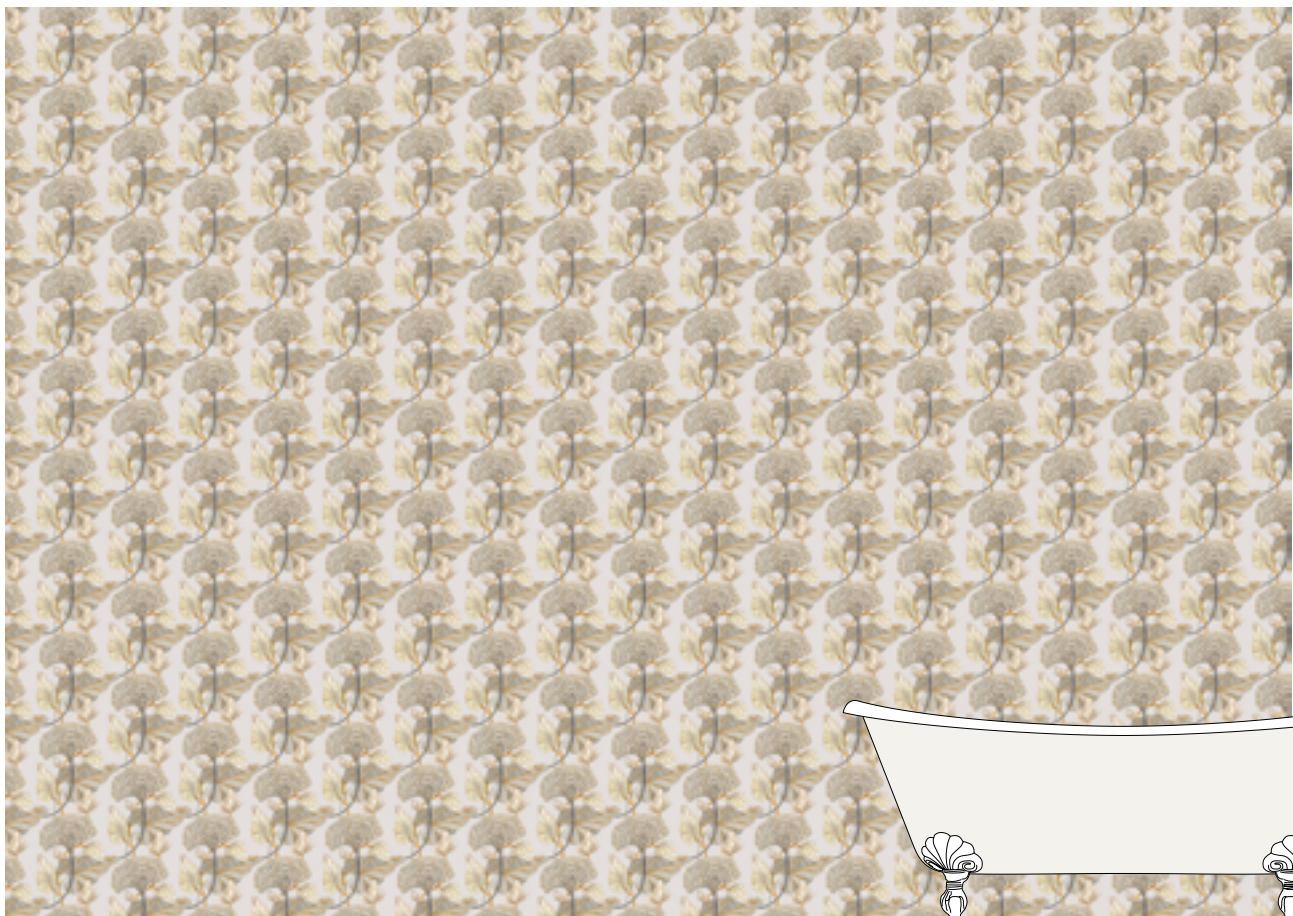
IVY 2  
FGIVY2



IVY 3  
FGIVY3

◀ 1:10

IVY 1 - FGIVY1



◀ 1:50

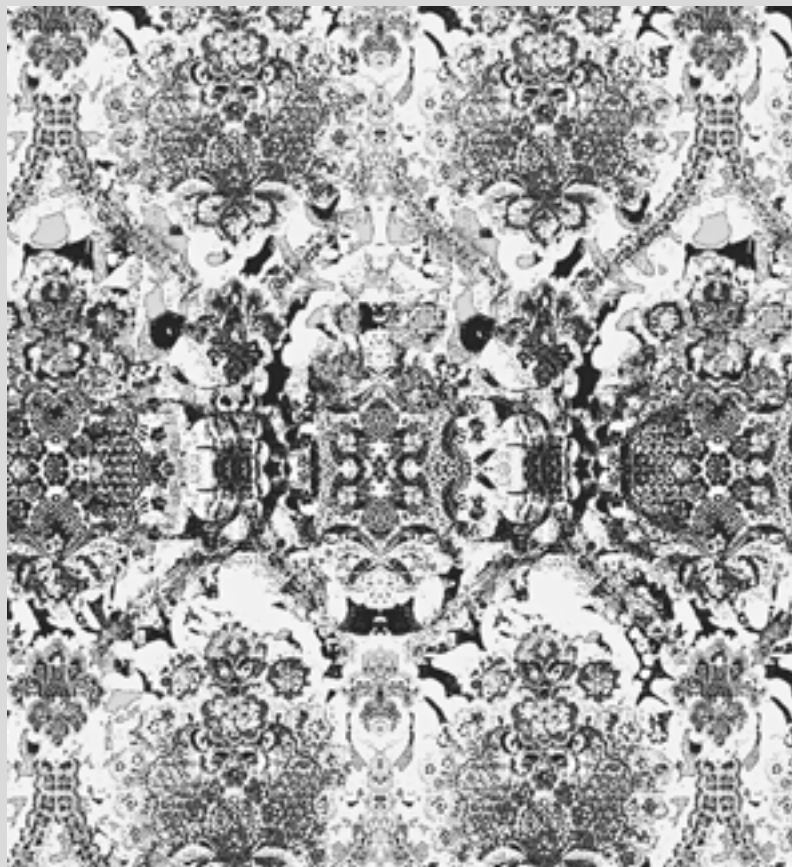
mm L: 4230 x H: 3000

WALLPAPER COLLECTION - FRANCESCA GREGO





# NINA FARRÉ



Nina Farré ha mosso i suoi primi passi come designer in india, imparando antiche tecniche manifatturiere che le hanno permesso di realizzare in seguito effetti grafici originali e vari. Come designer per la moda e l'arredamento, Nina Farré ama esplorare molteplici stili grafici: questa libertà e questo mélange rendono il suo lavoro molto riconoscibile e al contempo difficilmente schematizzabile. Nel 2016, Nina Farré ha sviluppato un concept di disegni su pietra bianca del mediterraneo, grazie al quale è entrata in contatto con Devon&Devon.

Nina Farré took her first steps as a designer in india, learning the ancient manufacturing techniques that she uses to create a variety of original graphic effects. As both a fashion and interior designer, Nina Farré enjoys exploring a range of graphic styles: this freedom and eclecticism makes her work immediately recognizable and, at the same time, elusive to categorisation. In 2016, Nina Farré developed a concept for designs using the white stone of the mediterranean, through which she came into contact with Devon&Devon.

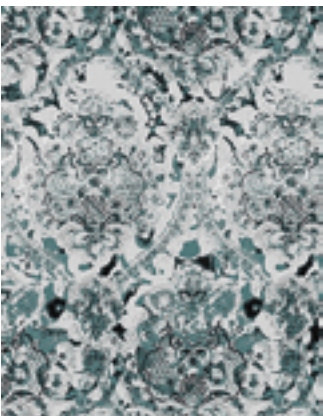


308 \_ ARABESQ  
312 \_ BLUE TILES  
316 \_ FONDU  
320 \_ SAMODE  
322 \_ SAMODE NEGA  
324 \_ TAPISSERIE

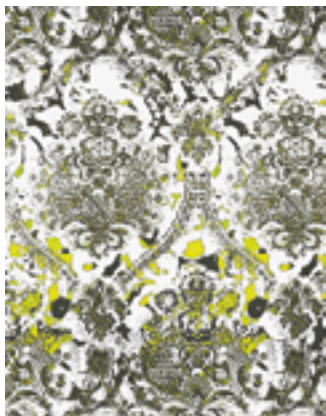
ARABESQ



ARABESQ FUSHIA  
NFARAF



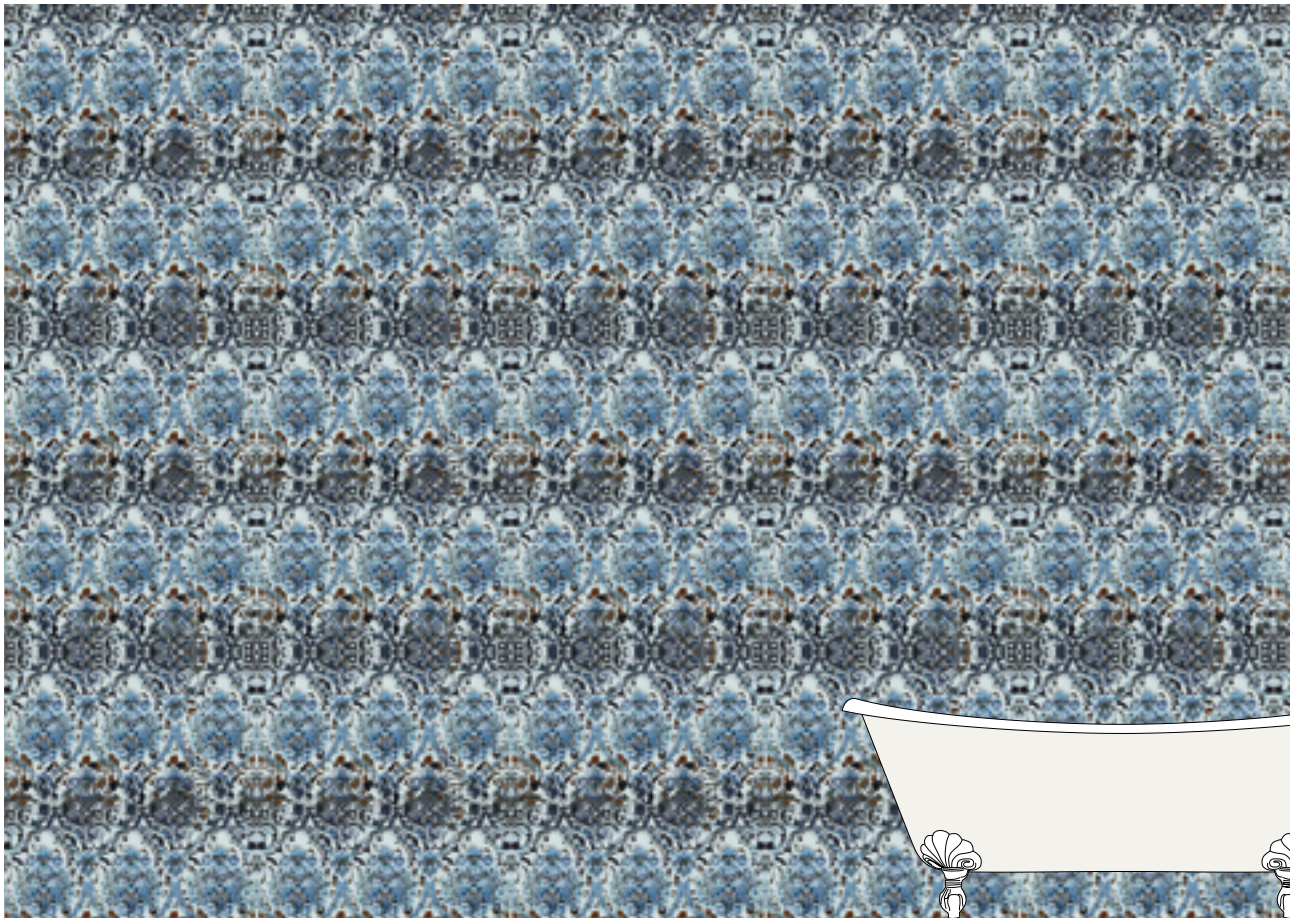
ARABESQ GREY  
NFARAG



ARABESQ KAKI  
NFARAK

◀ 1:10

ARABESQ BLUE - NFARAB



◀ 1:50

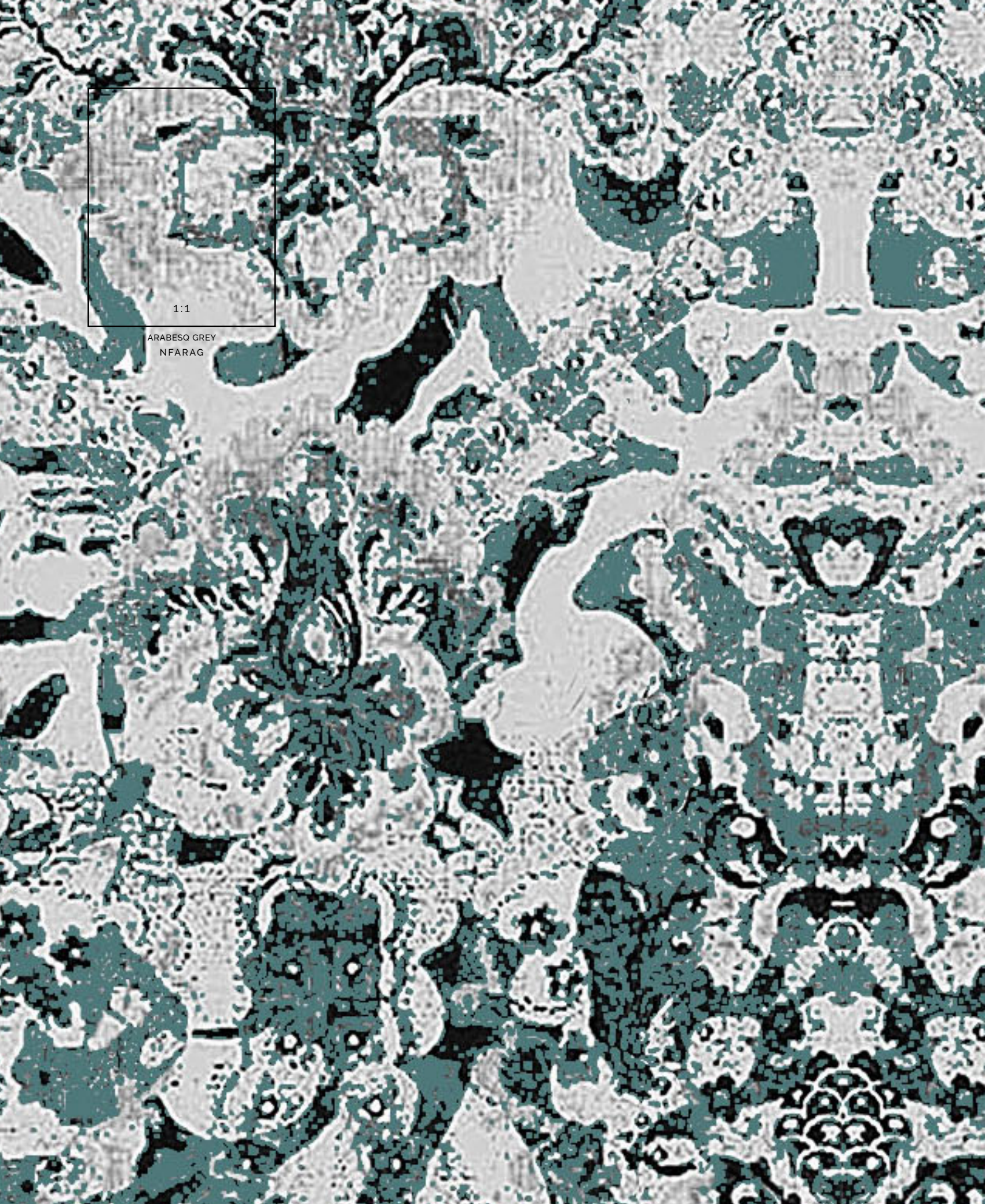
mm L: 4230 x H: 3000

WALLPAPER COLLECTION - NINA FARRÉ





ARABESQUE GREY  
NFARAG











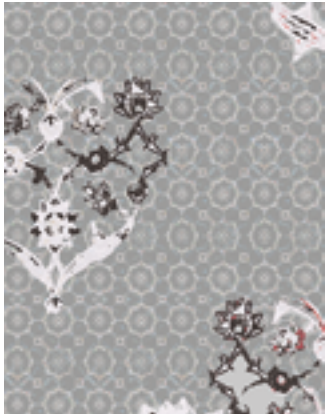
ARABESQUE BLUE



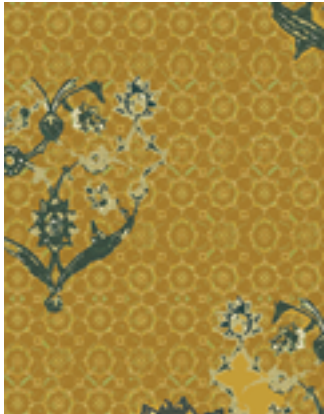
BLUE TILES



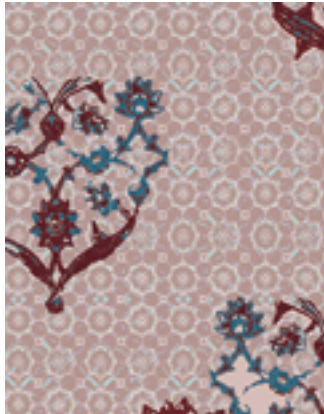
BLUE TILES BORDEAUX  
NFBLUB



BLUE TILES GREY  
NFBLUG



BLUE TILES OCRE  
NFBLUO



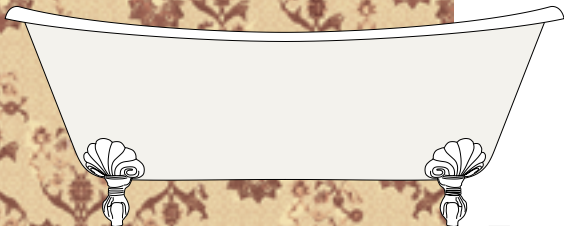
BLUE TILES OLD PINK  
NFBLUOP

◀ 1:10

BLUE TILES BEIGE ROSE - NFBLUBR



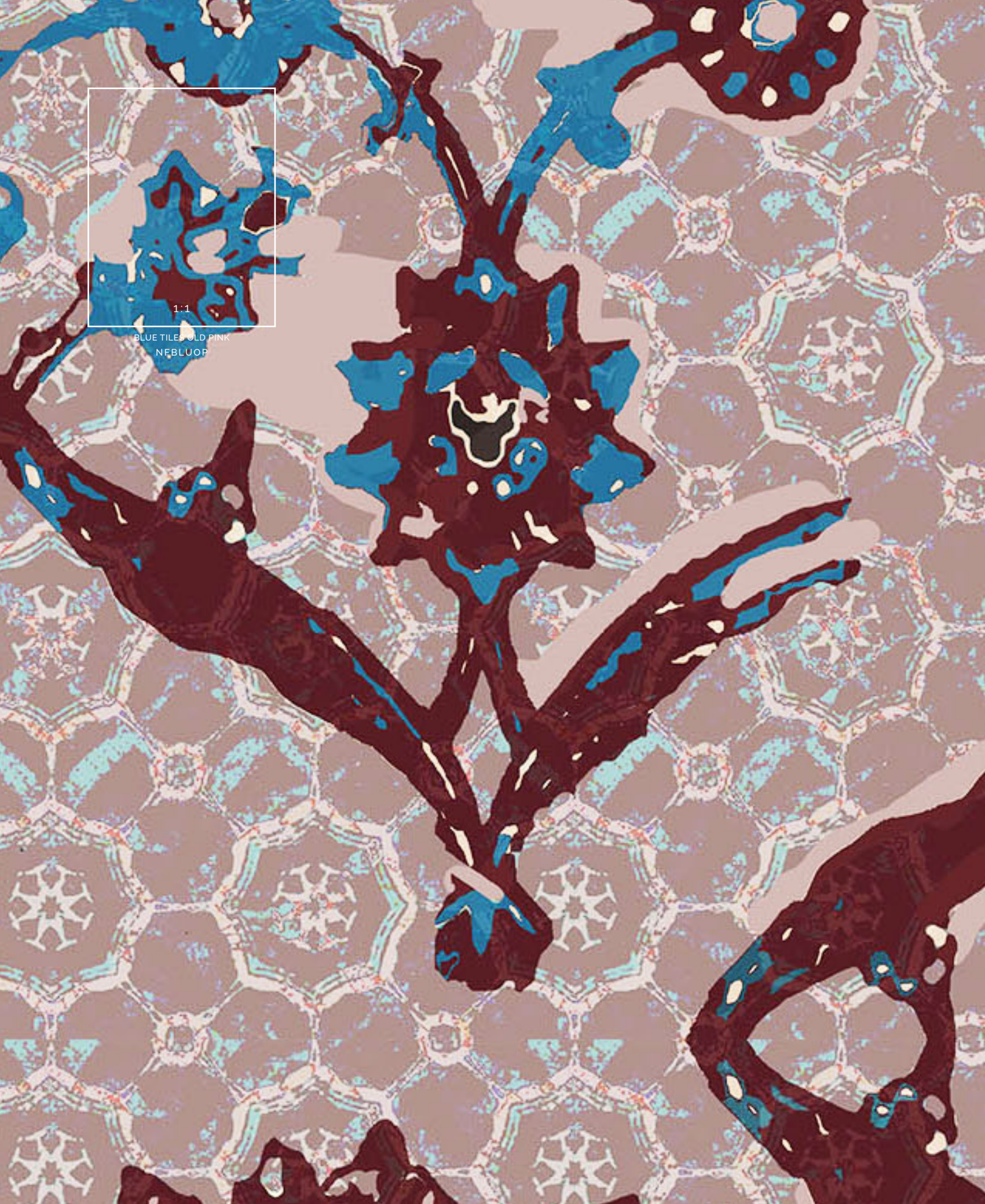
◀ 1:50



mm L: 4230 x H: 3000

WALLPAPER COLLECTION - NINA FARRÉ





1:1

BLUE TILES OLD PINK  
NEBLUOP









BLUE TILES BORDEAUX



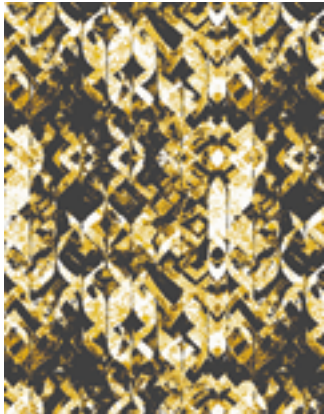
FONDU



FONDU BORDEAUX  
NFFONB



FONDU DARK BLUE  
NFFOND



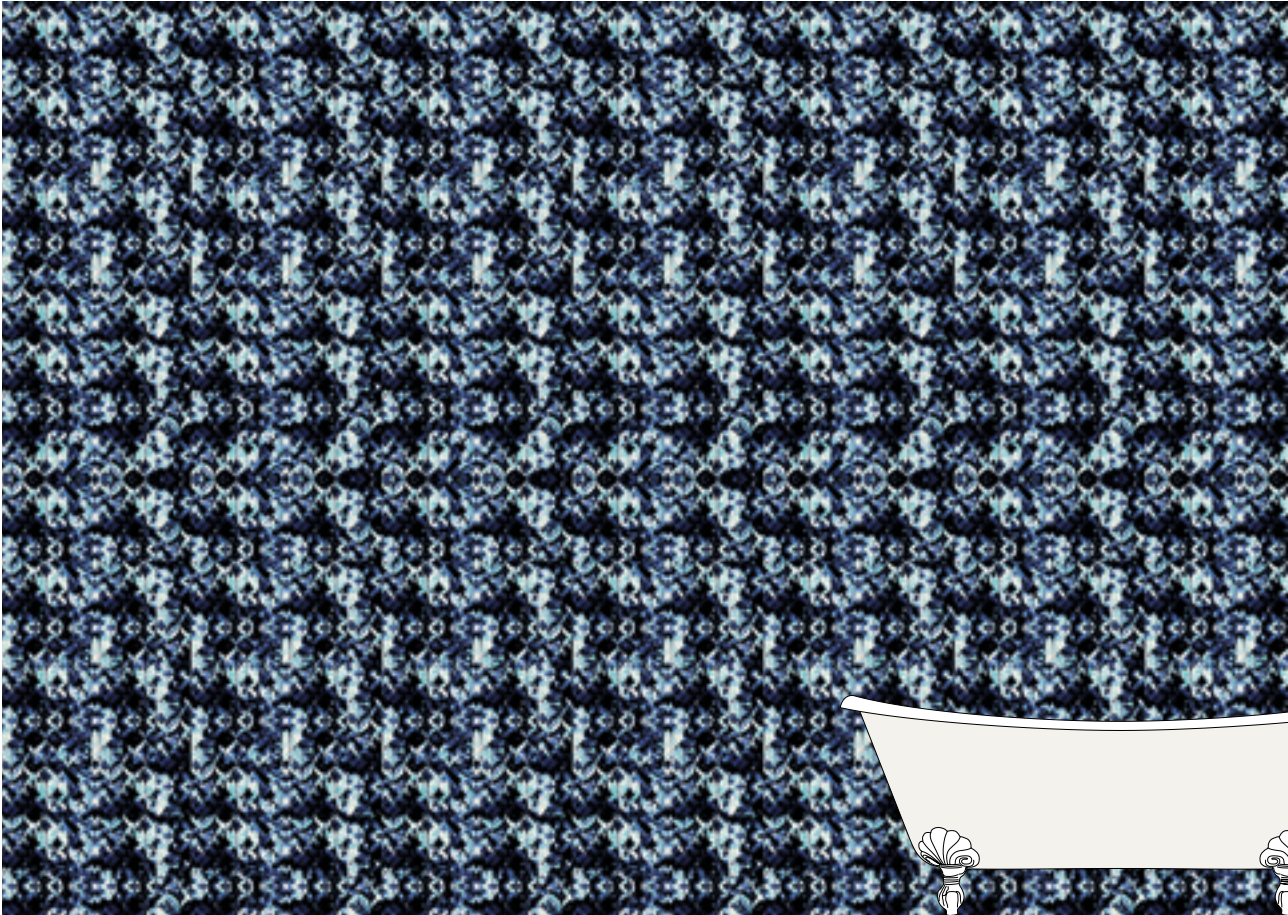
FONDU OCRE  
NFFONO



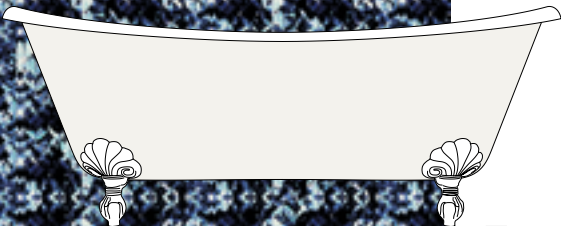
FONDU RED  
NFFONR

◀ 1:10

FONDU BLUE - NFFONBL



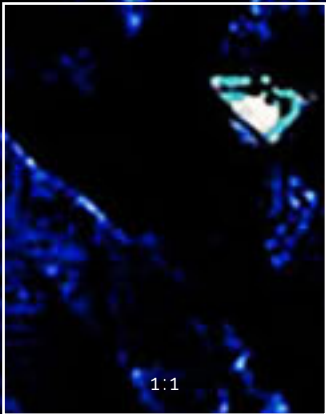
◀ 1:50



mm L: 4230 x H: 3000

WALLPAPER COLLECTION - NINA FARRÉ





1:1

FONDU DARK BLUE  
NFFOND









FONDU BLUE



SAMODE



SAMODE BLUE  
NFSAMB



SAMODE LAVANDE  
NFSAML



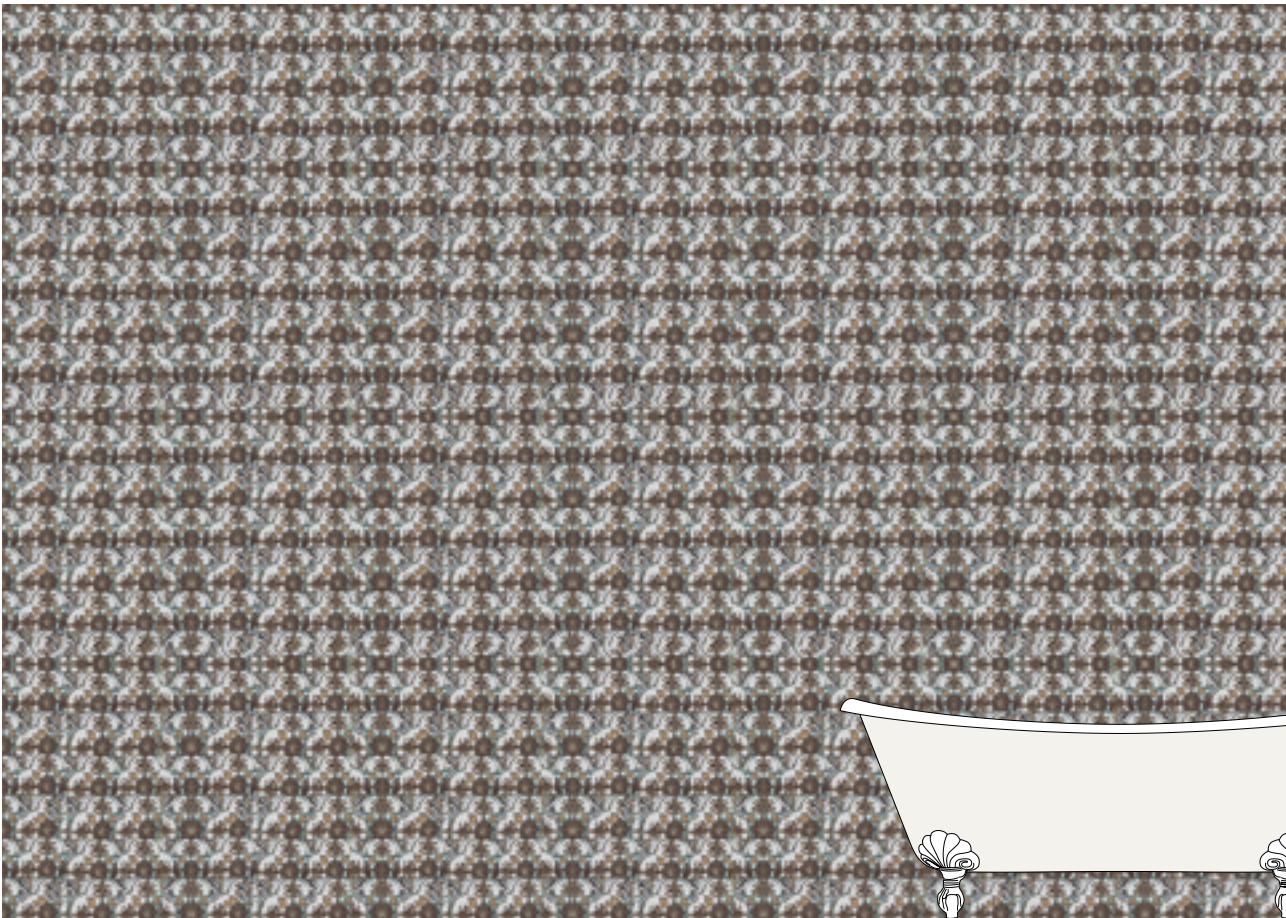
SAMODE NOIR&BLANC  
NFSAMN



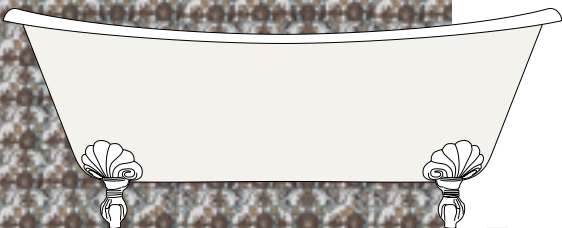
SAMODE YELLOW  
NFSAMY

◀ 1:10

SAMODE BEIGE GRIS - NFSAMBG



◀ 1:50



mm L: 4230 x H: 3000

WALLPAPER COLLECTION - NINA FARRÉ







## SAMODE NEGA



SAMODE NEGA NAVY BLUE  
NFSAMNN



SAMODE NEGA PINK  
NFSAMNP



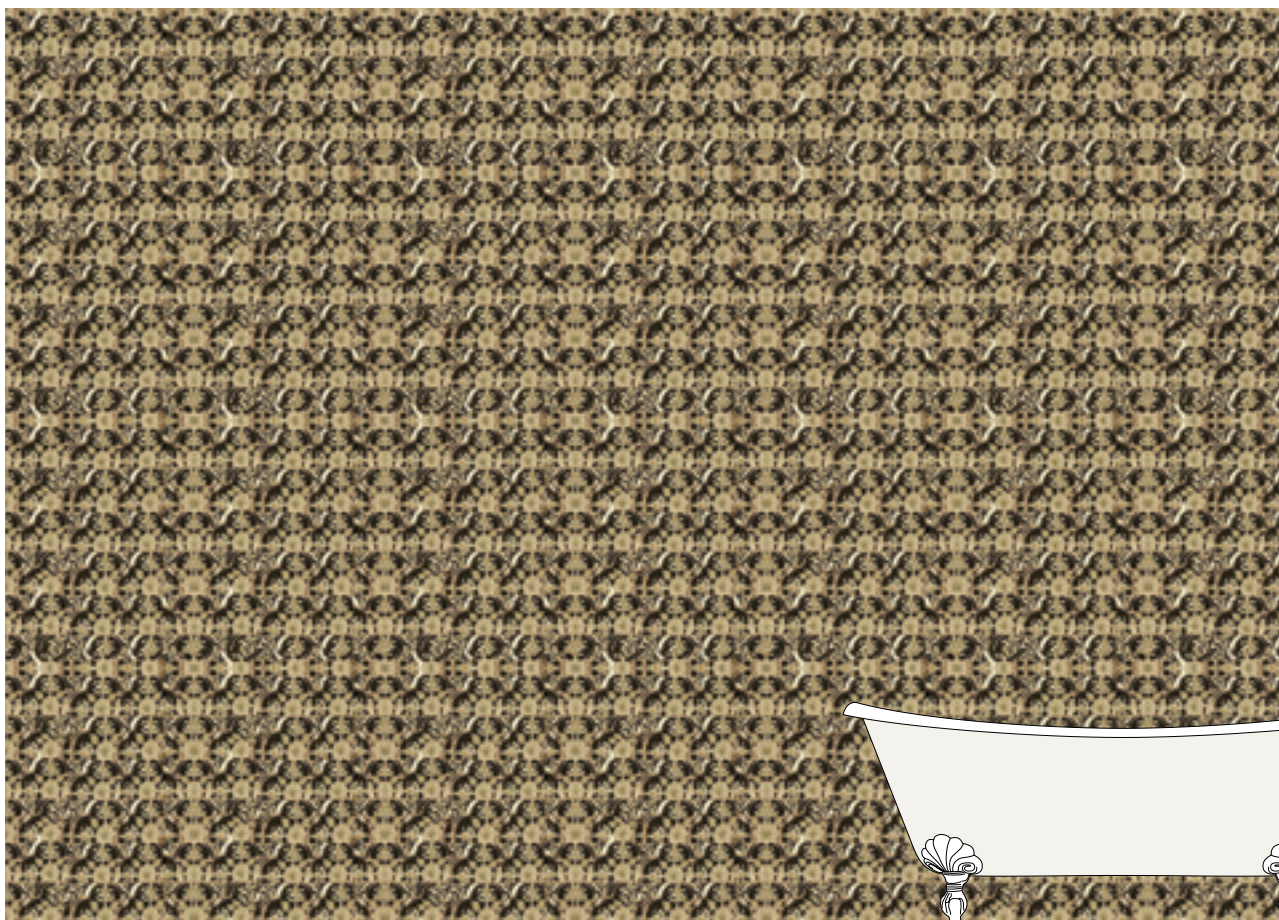
SAMODE NEGA RED  
NFSAMNR



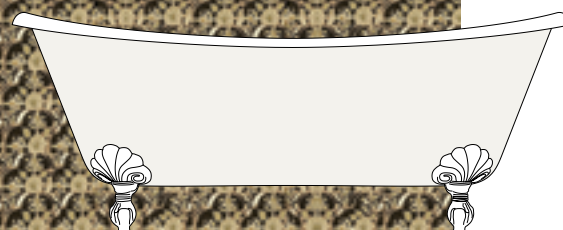
SAMODE NEGA YELLOW  
NFSAMNY

◀ 1:10

SAMODE NEGA BEIGE - NFSAMNB



◀ 1:50



mm L: 4230 x H: 3000







TAPISSERIE



TAPISSERIE BORDEAUX  
NFTAPB



TAPISSERIE GOLD  
NFTAPG



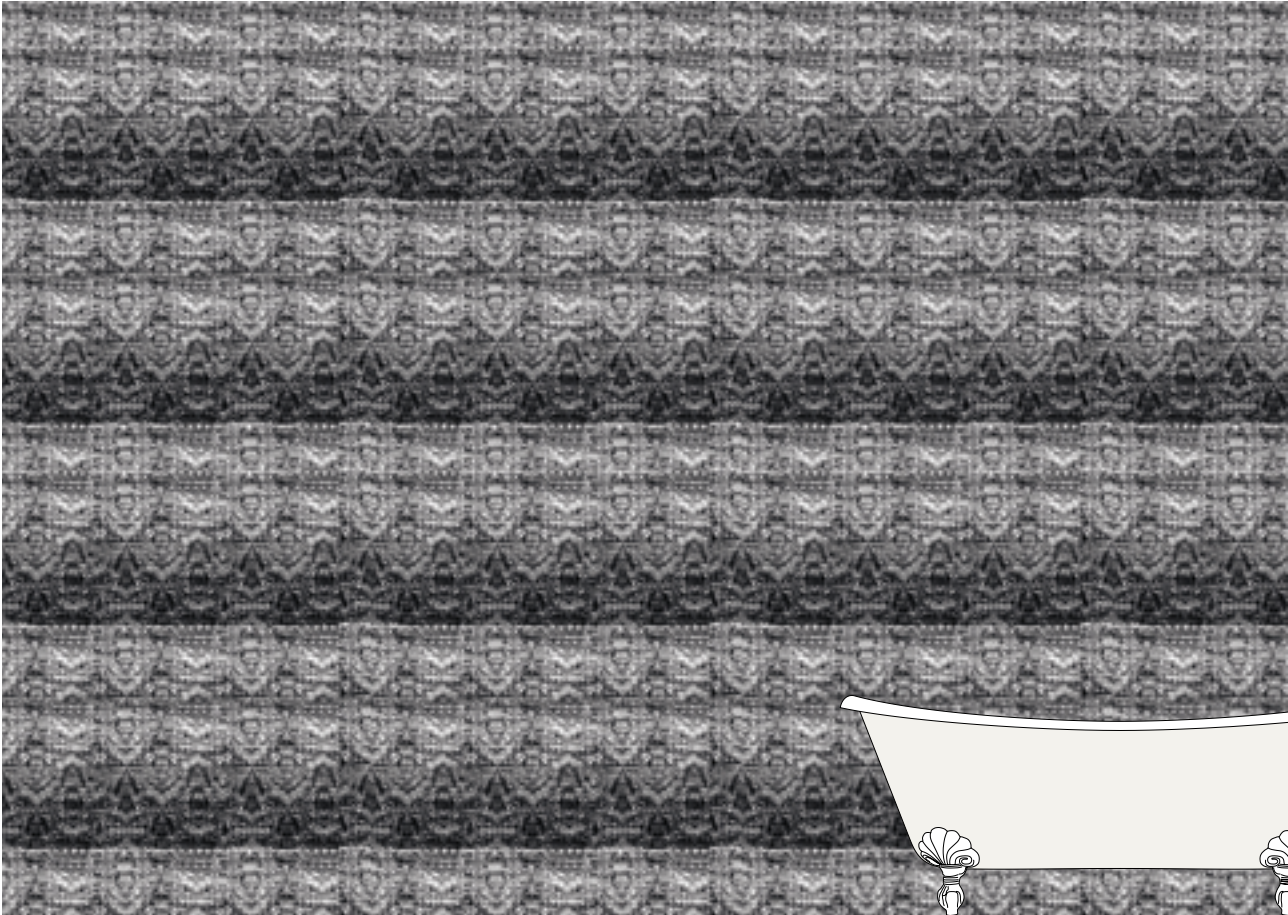
TAPISSERIE GREY BLUE  
NFTAPGB



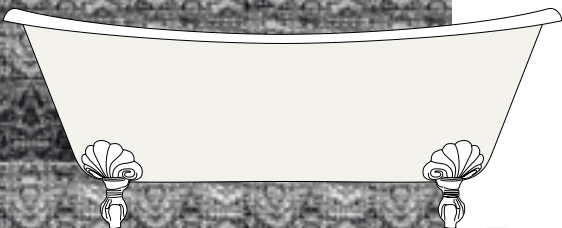
TAPISSERIE RED  
NFTAPR

◀ 1:10

TAPISSERIE BLACK - NFTAPBL



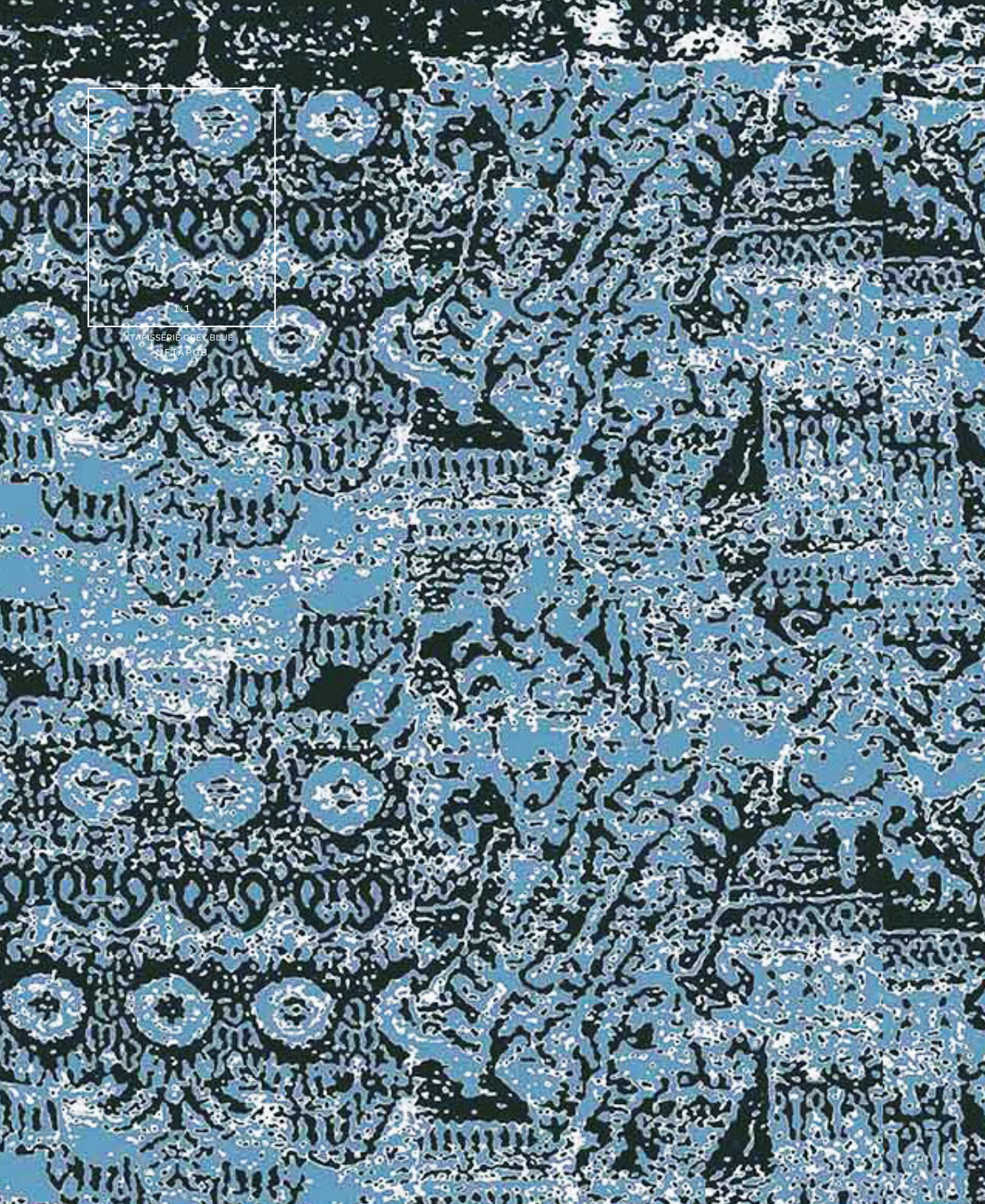
◀ 1:50



mm L: 4230 x H: 3000

WALLPAPER COLLECTION - NINA FARRÉ





1:1

TAPISSÉRIE GREY BLUE  
NFTAPCB









TAPISserie BLACK



# LISTINO PREZZI WALLPAPER COLLECTION

Prezzo Wallpaper Collection: P. 2.3570 - M<sup>2</sup>

## CARATTERISTICHE TECNICHE GENERALI

Devon&Devon Wallpaper Collection è un prodotto di alta qualità che non rinuncia al rispetto per la natura, con l'obiettivo del minor impatto ambientale possibile.

Le carte da parati viene stampata sulla parte superiore del supporto in vinile e sul retro di un foglio TNT 350g, che garantisce elevata stabilità in fase di applicazione e rimozione. La carta è facilmente lavabile con un panno umido (ma evitare qualunque prodotto abrasivo), ignifuga, non si restringe, non si deforma e non si strappa quando si incolla. Non contiene composti di metalli pesanti. È conforme alla norma su permeabilità e vapore acqueo e appartiene alla classe antincendio B-s2,d0.

Le carte da parati Devon&Devon vengono tagliate utilizzando macchinari di precisione garantiti da brevetti internazionali. Il cutter dispone di un taglio verticale perfetto che segue l'immagine con una precisione di 0,06mm (0,002 inch) ideale per il taglio delle immagini applicate in successione.

La larghezza di ogni telo misura in larghezza cm 62.

Gli inchiostri possiedono certificati di eccellenza che garantiscono il massimo rispetto dell'ambiente, la certa provenienza delle materie prime e la sicurezza dell'utilizzo per preservare la salute. Sono a base di acqua, completamente inodori e adatti ad ogni ambiente. Non sono infiammabili, non combustibili e sono privi di nichel.

L'alta qualità è ideale per coperture di grandi e piccole dimensioni.

Non richiedono etichette di pericolo secondo la direttiva UE 1999/45CE.



## **ORDINI**

Assistiamo il cliente durante la fase di progettazione e realizzazione dei propri ambienti.

Le carte da parati si ordinano inviando il rilievo metrico delle pareti da rivestire. Sarà nostra cura restituire al cliente una proposta grafica e relativo preventivo di spesa. È fondamentale che le misure delle pareti siano chiare e precise.

In presenza di porte di grande formato o portefinestre, non verrà computata la parte centrale interna a queste. Le finestre invece seguono il principio del vuoto per pieno, per cui verranno stampate per intero per dare continuità nella parte sopra e sotto.

## **CONSIGLI DI POSA E AVVERTENZE**

Le carte da parati Devon&Devon si posano su ogni tipo di superficie purché prive di qualunque imperfezione strutturale.

Per facilitare la comprensione del disegno in fase di posa, i pannelli vengono forniti numerati. Per l'installazione raccomandiamo di rivolgersi a personale altamente qualificato e specializzato, e di utilizzare una colla tipo METYLAN OVALIT, a base di resine sintetiche in dispersione acquosa.

L'uso della carta da parati è possibile anche all'interno della stanza da bagno, ma con alcuni accorgimenti: negli ambienti doccia è assolutamente sconsigliato, mentre in altre pareti del bagno raccomandiamo a fine posa di cerare con "Cera trasparente per stucco veneziano" tipo Saratoga, applicata sui parati con panno di lana: consente di proteggere i parati da eccessi di vapore presenti nella stanza.

Raccomandiamo inoltre, prima della posa, di controllare attentamente il materiale ricevuto con la spedizione dell'ordine: non saranno infatti accettate contestazioni di sorta a materiale posato.



# WALLPAPER COLLECTION PRICE LIST

Retail price Wallpaper Collection: P. 2.3570 - SQM

## GENERAL TECHNICAL SPECIFICATIONS

Devon&Devon Wallpaper Collection is a high-quality, environmentally-friendly product designed to have the lowest environmental impact possible.

The wallpaper is printed on the top of the vinyl base and on the back of a 350g non-woven (TNT) sheet, which guarantees high stability during application and removal. The paper can be cleaned easily with a damp cloth (but avoid any kind of abrasive products), is flame-retardant, does not shrink or distort and does not tear when glued. It contains no heavy metal compounds. It complies with regulations relating to permeability and water vapour and belongs to fire class rating B-s2,d0.

Devon&Devon wallpaper is cut using precision machinery covered by international patents. The cutter gives a perfect vertical cut, which follows the image with a precision of 0.06mm (0.002 inch), ideal for cutting images applied consecutively.

The width of each panel is 62 cm.

The inks possess certificates of excellence which guarantees the utmost respect for the environment, as well as guaranteed the origin of the raw materials and the safety of the product when being used. They contain water, are completely odourless and are suitable for any room. They are unflammable, non-combustible and nickel free.

Thanks to their high quality, they are ideal for covering small and large areas. They do not require hazard labels as per the EU 1999/45EC directive.



## **ORDERS**

We assist our clients throughout the process of designing and creating the ambience in which the wallpaper is to be used. The wallpaper should be ordered by sending the metric survey of the walls to be covered. We will then send the client a graphic proposal and related cost estimate. It is essential that the wall measurements are clear and precise.

In the case of large doors their internal central part will be not take into consideration for the graphics nor the order. Windows instead follow the total volume (inclusive of dead freight) principle, and will therefore be printed in their entirety to ensure the continuity of the design in the parts above and below.

## **RECOMMENDATIONS AND INSTRUCTIONS**

Devon&Devon wallpaper can be applied to all types of surface, as long as they contain no structural imperfections.

To facilitate the understanding of the design during installation, the panels are supplied numbered. For the installation we recommend contacting highly qualified and specialized personnel, and to use a METYLAN OVALIT type glue, based on synthetic resins in aqueous dispersion.

The wallpaper can also be used inside bathrooms, but with certain precautions: it is absolutely not recommended in shower areas, while on other bathroom walls we recommend finishing by applying 'Transparent wax for Venetian stucco' (e.g. by Saratoga) to the wall using a woolen cloth: this helps protect the wallpaper from any excess steam in the room.

Before the installation, we strongly recommend to check the goods received once the order has been delivered; we cannot accept any claims once the materials have been installed to the walls.



# CONDIZIONI GENERALI DI VENDITA

Le descrizioni e le immagini dei prodotti del presente catalogo sono puramente indicative e non possono essere considerate vincolanti ai fini del loro utilizzo.

Devon&Devon si riserva di apportare ai prodotti le modifiche che ritiene più opportune, in qualsiasi momento e senza preavviso.

Per ulteriori informazioni sulle caratteristiche tecniche dei prodotti e sulle condizioni generali di vendita, invitiamo visitare il sito [www.devon-devon.com](http://www.devon-devon.com).

Contatti:

**Devon&Devon S.p.A.**

Via Arno, 26 - 50019 - Sesto Fiorentino - Italia

Tel. +39 055 308350

Fax. +39 055 375549

[info@devon-devon.com](mailto:info@devon-devon.com)

Società soggetta ad attività di direzione e coordinamento Italcer S.p.A.

[www.devon-devon.com](http://www.devon-devon.com)



# GENERAL TERMS AND CONDITIONS OF SALE

Descriptions and pictures of products included in this catalogue have an indicative value only and are not binding for products' use.

Devon&Devon reserves the right to modify their products without prior notification.

For further technical information of the products and the General Terms and Conditions of Sale, please visit [www.devon-devon.com](http://www.devon-devon.com).

Contacts:

**Devon&Devon S.p.A.**

Via Arno, 26 - 50019 - Sesto Fiorentino - Italy

Tel. +39 055 308350

Fax. +39 055 375549

[info@devon-devon.com](mailto:info@devon-devon.com)

Company subject to management and coordination activities Italcer S.p.A.

[www.devon-devon.com](http://www.devon-devon.com)