

 GRAPH

Ceramica
VOGUE

Ceramica
VOGUE

TILES FOR ARCHITECTURE

GRAPH

Il termine Graph indica una carta millimetrata che reca stampato un reticolo di linee distanziate l'una dall'altra usata per disegni di precisione. La collezione di piastrelle rettificate in grès smaltato Vogue Graph sintetizza nel suo nome l'obbiettivo di poter diventare per il progettista e l'utente finale uno strumento di disegno su superfici verticali e orizzontali. I tre formati disponibili e le 29 varianti colore delle serie Neutral e Color abbinabili a stucchi colorati declinano Graph in innumerevoli combinazioni a seconda degli ambienti in cui viene utilizzato: le sue caratteristiche di superficie antiscivolo R10, ma di facile pulizia, lo rendono inoltre adatto sia agli ambienti residenziali che extra residenziali quali uffici, ristoranti, scuole, ospedali e impianti sportivi. Attraverso i micro pattern e i contrasti di colore Graph é in grado di caratterizzare lo spazio e allo stesso tempo il suo segno discreto ne permette facilmente l'abbinamento con altri materiali e il dialogo con gli elementi d'arredo: il corretto disegno di un ambiente presuppone materiali in grado di “parlare”, ma anche di “ascoltare”, come da sempre nella tradizione del marchio Ceramica Vogue.

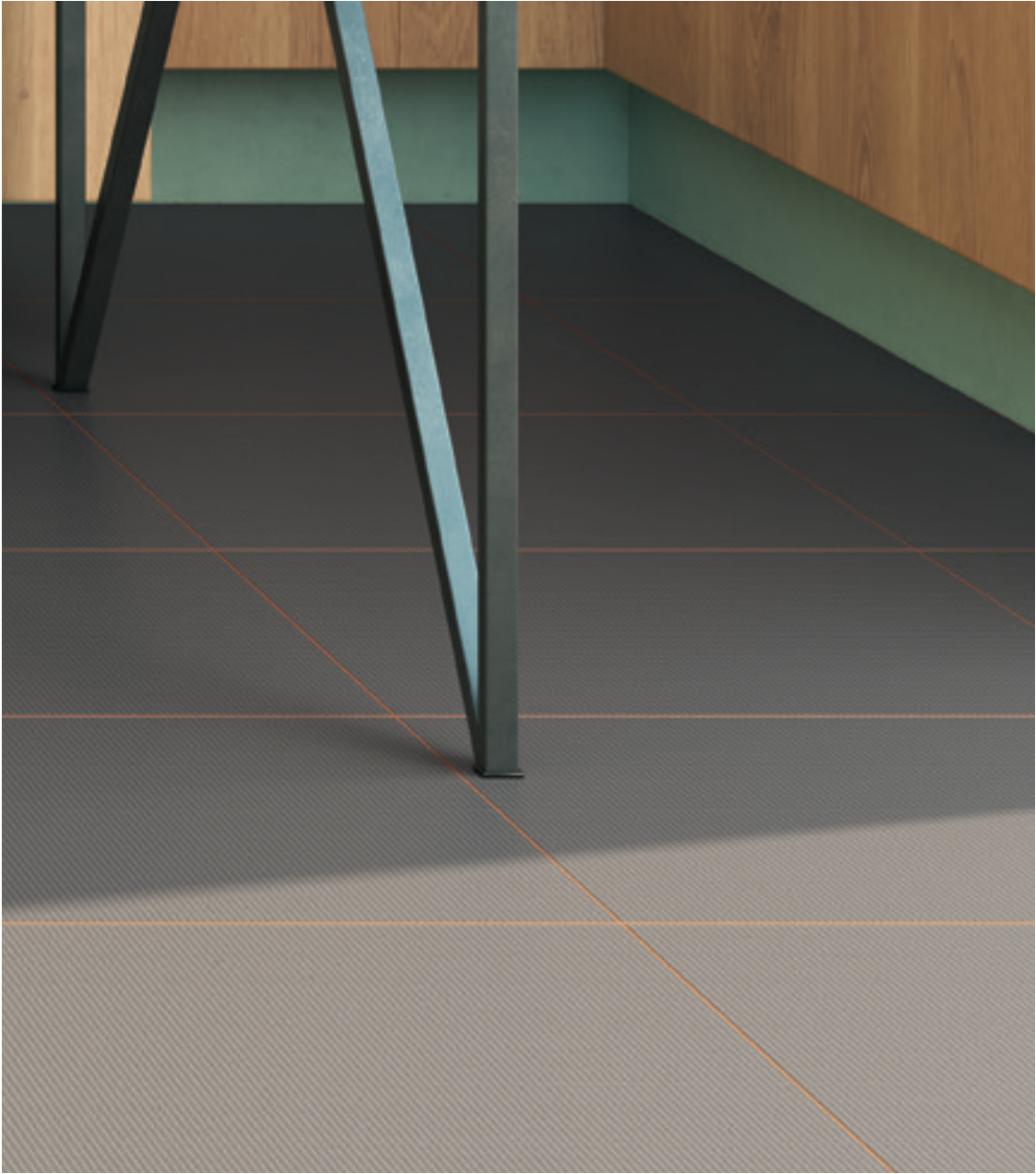
Graph or millimetre paper is printed with fine lines making up a regular grid used for precision drawings. The collection of rectified glazed stoneware tiles named Vogue Graph reflects, in its very name, the aim of being adopted by designers and end users as a drawing tool for vertical and horizontal surfaces. The three available sizes and the 29 colours of the Neutral and Color series can be matched with coloured grouts to create countless combinations suiting every environment in which Graph is to be used. Its easy-to-clean, R10 non-slip surface is suitable for residential and non-residential applications, such as offices, restaurants, schools, hospitals and sports facilities. With its micro patterns and colour contrasts, Graph makes its mark on any room. At the same time, its discreet design makes it easy to pair with other materials and furnishings. Because any interior design should encompass materials that "speak" and "listen" to one another, in true Ceramica Vogue style.



Pavimento/Floor:
GP 006 50x50x1 cm

Rivestimento/Wall:
GP 018 25x25x1 cm

Giunto/Joint
MAPEI 140 Coral Red





Pavimento/Floor:
GP 016 50x50x1 cm

Rivestimento/Wall:
GP 029 25x25x1 cm

Giunto/Joint
MAPEI 140 Coral Red







Pavimento/Floor:
GP 002 25x25x1 cm
GP 014 50x50x1 cm

Rivestimento/Wall:
GP 002 10x25x1 cm
GP 014 50x50x1 cm

Giunto/Joint
MAPEI 145 Terra di Siena





Pavimento/Floor:
GP 021 50x50x1 cm

Rivestimento/Wall:
GP 023 10x25x1 cm

Giunto/Joint
MAPEI 174 Tornado



Pavimento/Floor:
GP 012 50x50x1 cm
GP 012 25x25x1 cm

Rivestimento/Wall:
GP 026 50x50x1 cm
GP 026 25x25x1 cm
GP 026 10x25x1 cm

Giunto/Joint
MAPEI 170 Crocus Blue





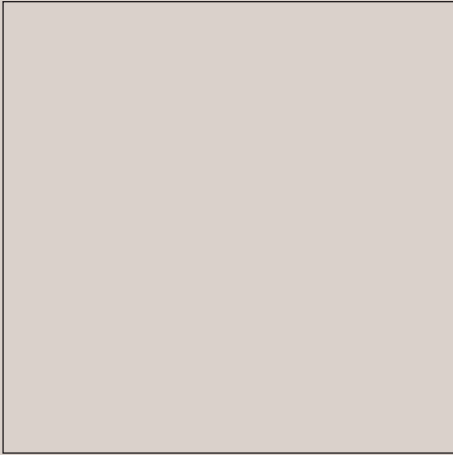
Pavimento/Floor:
GP 028 50x50x1 cm

Rivestimento/Wall:
GP 001 10x25x1 cm

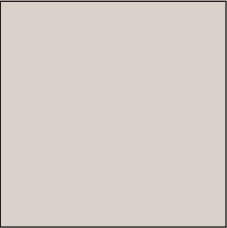
Giunto/Joint
MAPEI 150 Yellow



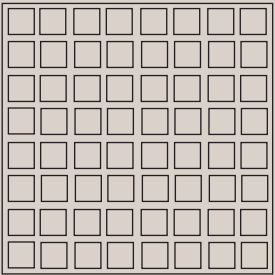
50x50x1 cm
20"x20"x²⁵/₆₄"



25x25x1 cm
10"x10"x²⁵/₆₄"



10x25x1 cm
4"x10"x²⁵/₆₄"



colori
GP 001 - GP 0014

GRAPH

NEUTRAL

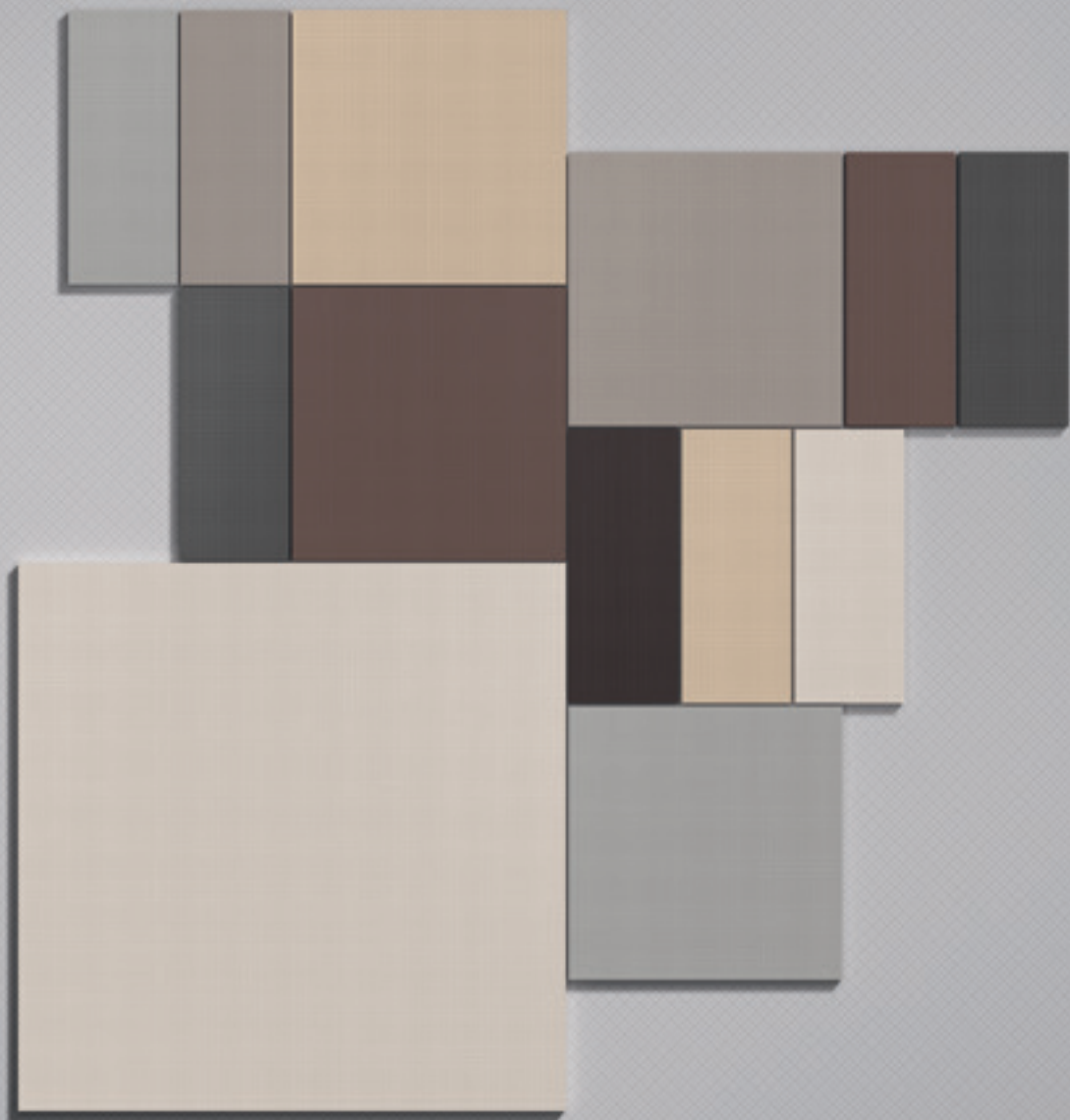
R10 / DCOF>0,42

coloured body

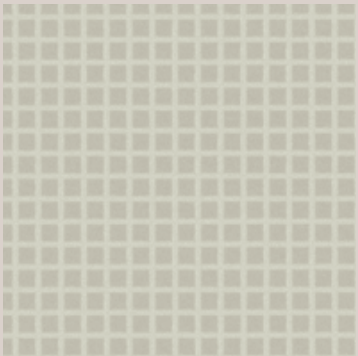
GRAPH

NEUTRAL

R10 / DCOF>0,42



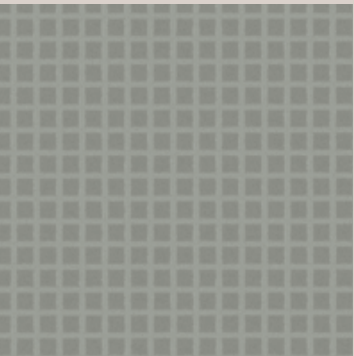
COLORI - COLOURS



GP 001

50x50x1 cm - 20"x20"x²⁵/₆₄"
25x25x1 cm - 10"x10"x²⁵/₆₄"
10x25x1 cm - 4"x10"x²⁵/₆₄"

Rettificato - Rectified



GP 002

50x50x1 cm - 20"x20"x²⁵/₆₄"
25x25x1 cm - 10"x10"x²⁵/₆₄"
10x25x1 cm - 4"x10"x²⁵/₆₄"

Rettificato - Rectified

GIUNTI - JOINTS SUGGESTION

LATICRETE 90 Light Pewter

MAPEI 150 Yellow

MAPEI 181 Jade Green

MAPEI 112 Medium Grey

MAPEI 150 Yellow

MAPEI 181 Jade Green

TEXTURE IN SCALA 1:1 - TEXTURE ARE FULL SCALE

COLORI - COLOURS



GP 003

50x50x1 cm - 20"x20" x²⁵/₆₄"
25x25x1 cm - 10"x10" x²⁵/₆₄"
10x25x1 cm - 4"x10" x²⁵/₆₄"

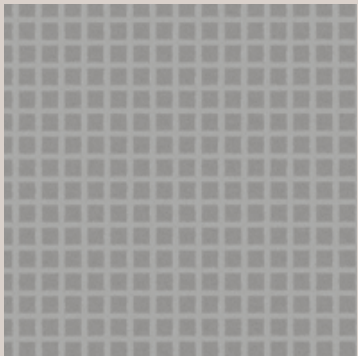
Rettificato - Rectified



GP 004

50x50x1 cm - 20"x20" x²⁵/₆₄"
25x25x1 cm - 10"x10" x²⁵/₆₄"
10x25x1 cm - 4"x10" x²⁵/₆₄"

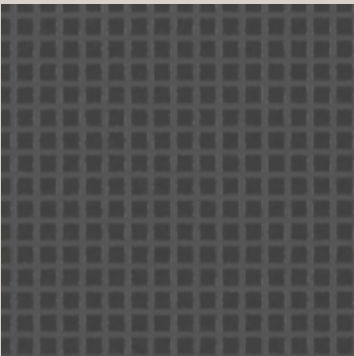
Rettificato - Rectified



GP 005

50x50x1 cm - 20"x20" x²⁵/₆₄"
25x25x1 cm - 10"x10" x²⁵/₆₄"
10x25x1 cm - 4"x10" x²⁵/₆₄"

Rettificato - Rectified



GP 006

50x50x1 cm - 20"x20" x²⁵/₆₄"
25x25x1 cm - 10"x10" x²⁵/₆₄"
10x25x1 cm - 4"x10" x²⁵/₆₄"

Rettificato - Rectified

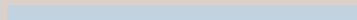
GIUNTI - JOINTS SUGGESTION



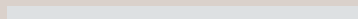
MAPEI 100 Withe



MAPEI 160 Magnolia



MAPEI 170 Crocus Blue



MAPEI 111 Silver Grey



MAPEI 150 Yellow



MAPEI 181 Jade Green



MAPEI 110 Manhattan 2000



MAPEI 150 Yellow



MAPEI 181 Jade Green



MAPEI 114 Anthracite



MAPEI 150 Yellow



MAPEI 181 Jade Green

TEXTURE IN SCALA 1:1 - TEXTURE ARE FULL SCALE

COLORI - COLOURS



GP 007

50x50x1 cm - 20"x20"x²⁵/₆₄"
25x25x1 cm - 10"x10"x²⁵/₆₄"
10x25x1 cm - 4"x10"x²⁵/₆₄"

Rettificato - Rectified



GP 008

50x50x1 cm - 20"x20"x²⁵/₆₄"
25x25x1 cm - 10"x10"x²⁵/₆₄"
10x25x1 cm - 4"x10"x²⁵/₆₄"

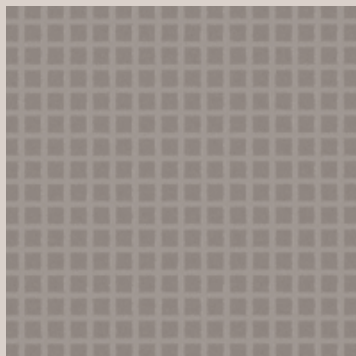
Rettificato - Rectified



GP 009

50x50x1 cm - 20"x20"x²⁵/₆₄"
25x25x1 cm - 10"x10"x²⁵/₆₄"
10x25x1 cm - 4"x10"x²⁵/₆₄"

Rettificato - Rectified

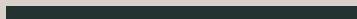


GP 010

50x50x1 cm - 20"x20"x²⁵/₆₄"
25x25x1 cm - 10"x10"x²⁵/₆₄"
10x25x1 cm - 4"x10"x²⁵/₆₄"

Rettificato - Rectified

GIUNTI - JOINTS SUGGESTION



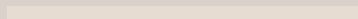
LATICRETE 22 Midnight Black



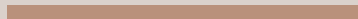
MAPEI 141 Caramel



MAPEI 145 Terra di Siena



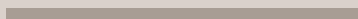
LATICRETE 16 Siltstone



MAPEI 141 Caramel



MAPEI 145 Terra di Siena



MAPEI 133 Sand



MAPEI 141 Caramel



MAPEI 145 Terra di Siena



MAPEI 134 Silk



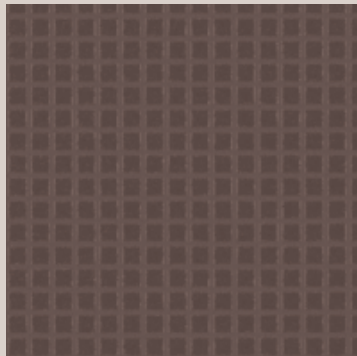
MAPEI 141 Caramel



MAPEI 145 Terra di Siena

TEXTURE IN SCALA 1:1 - TEXTURE ARE FULL SCALE

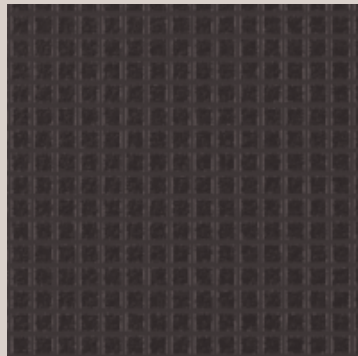
COLORI - COLOURS



GP 011

50x50x1 cm - 20"x20" x²⁵/₆₄"
25x25x1 cm - 10"x10" x²⁵/₆₄"
10x25x1 cm - 4"x10" x²⁵/₆₄"

Rettificato - Rectified



GP 012

50x50x1 cm - 20"x20" x²⁵/₆₄"
25x25x1 cm - 10"x10" x²⁵/₆₄"
10x25x1 cm - 4"x10" x²⁵/₆₄"

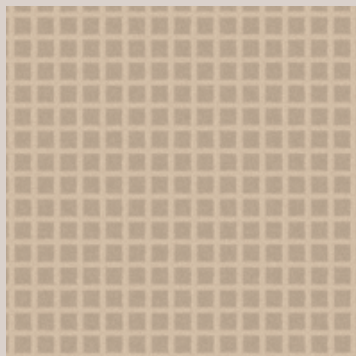
Rettificato - Rectified



GP 013

50x50x1 cm - 20"x20" x²⁵/₆₄"
25x25x1 cm - 10"x10" x²⁵/₆₄"
10x25x1 cm - 4"x10" x²⁵/₆₄"

Rettificato - Rectified

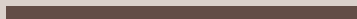


GP 014

50x50x1 cm - 20"x20" x²⁵/₆₄"
25x25x1 cm - 10"x10" x²⁵/₆₄"
10x25x1 cm - 4"x10" x²⁵/₆₄"

Rettificato - Rectified

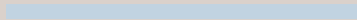
GIUNTI - JOINTS SUGGESTION



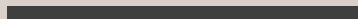
MAPEI 144 Chocolate



MAPEI 160 Magnolia



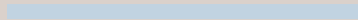
MAPEI 170 Crocus Blue



MAPEI 149 Volcano Sand



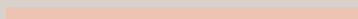
MAPEI 160 Magnolia



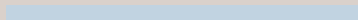
MAPEI 170 Crocus Blue



MAPEI 130 Jasmine



MAPEI 160 Magnolia



MAPEI 170 Crocus Blue



MAPEI 132 Beige 2000



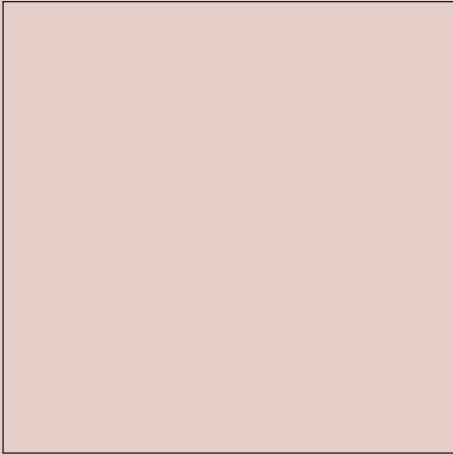
MAPEI 141 Caramel



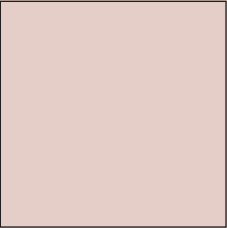
MAPEI 145 Terra di Siena

TEXTURE IN SCALA 1:1 - TEXTURE ARE FULL SCALE

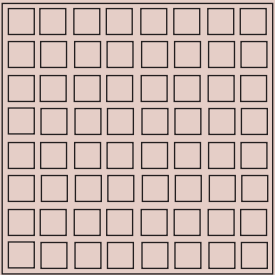
50x50x1 cm
20"x20"x²⁵/₆₄"



25x25x1 cm
10"x10"x²⁵/₆₄"



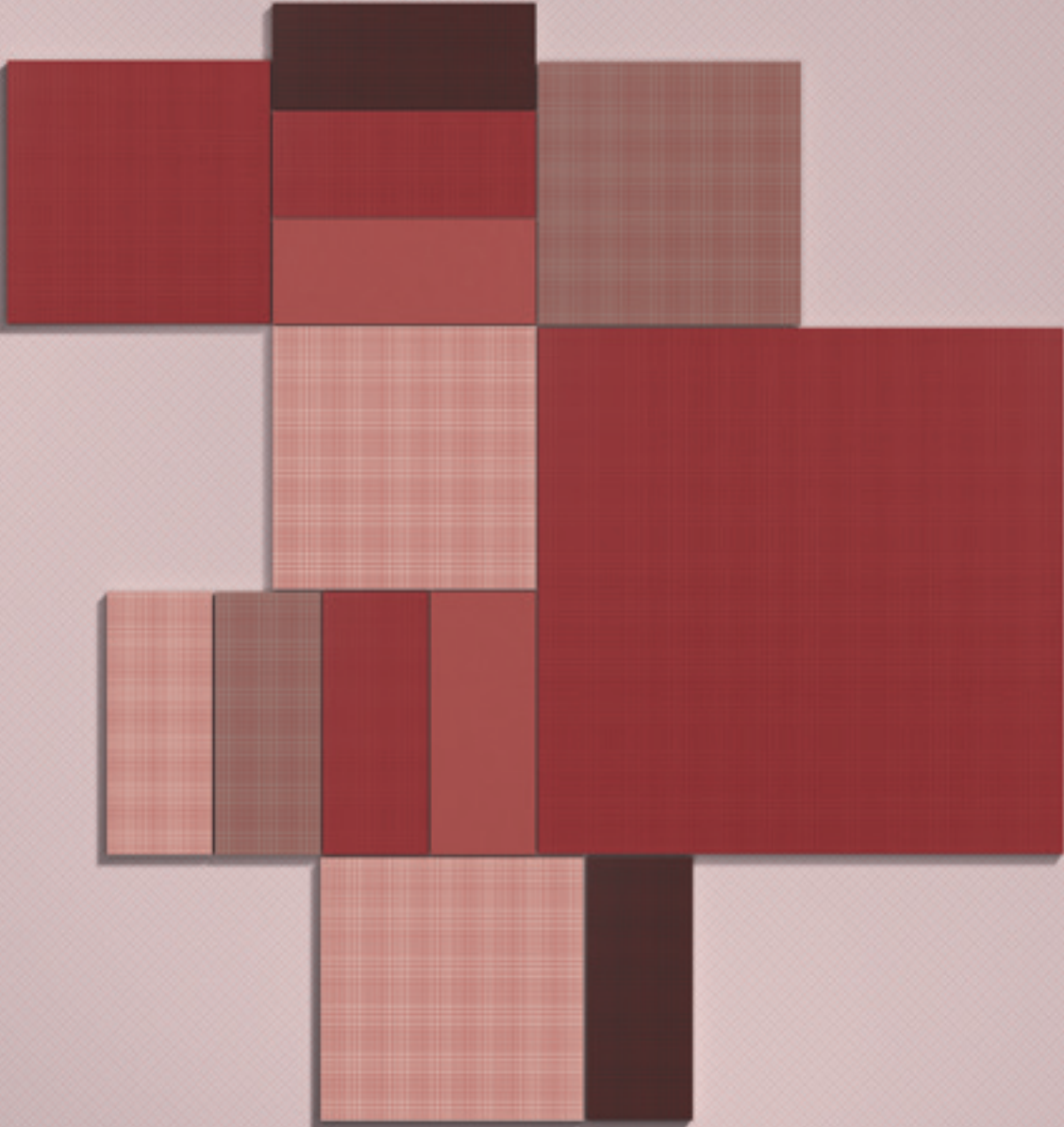
10x25x1 cm
4"x10"x²⁵/₆₄"



colori
GP 015 - GP 029

GRAPH
COLOR
R10 / DCOF>0,42

GRAPH
COLOR



COLORI - COLOURS



GP 015

50x50x1 cm - 20"x20"x²⁵/₆₄"
25x25x1 cm - 10"x10"x²⁵/₆₄"
10x25x1 cm - 4"x10"x²⁵/₆₄"

Rettificato - Rectified

GIUNTI - JOINTS SUGGESTION



MAPEI 143 Terracotta



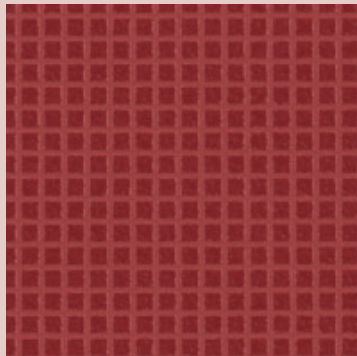
MAPEI 145 Terra di Siena



MAPEI 140 Coral Red

TEXTURE IN SCALA 1:1 - TEXTURE ARE FULL SCALE

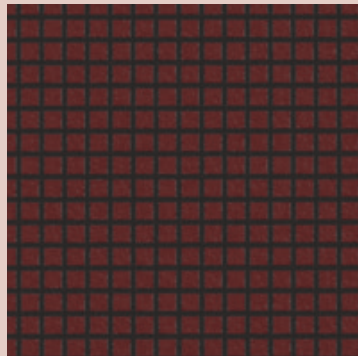
COLORI - COLOURS



GP 016

50x50x1 cm - 20"x20" x²⁵/₆₄"
25x25x1 cm - 10"x10" x²⁵/₆₄"
10x25x1 cm - 4"x10" x²⁵/₆₄"

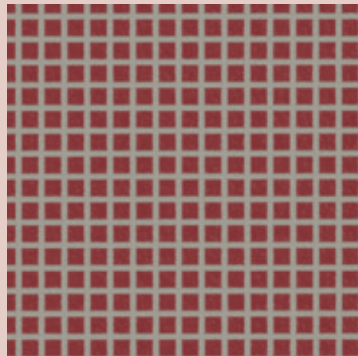
Rettificato - Rectified



GP 017

50x50x1 cm - 20"x20" x²⁵/₆₄"
25x25x1 cm - 10"x10" x²⁵/₆₄"
10x25x1 cm - 4"x10" x²⁵/₆₄"

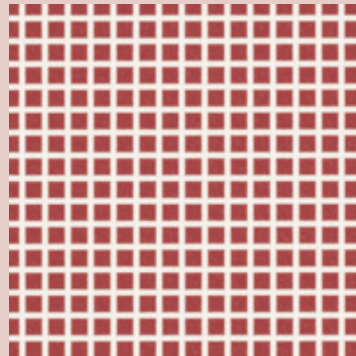
Rettificato - Rectified



GP 018

50x50x1 cm - 20"x20" x²⁵/₆₄"
25x25x1 cm - 10"x10" x²⁵/₆₄"
10x25x1 cm - 4"x10" x²⁵/₆₄"

Rettificato - Rectified

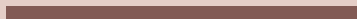


GP 019

50x50x1 cm - 20"x20" x²⁵/₆₄"
25x25x1 cm - 10"x10" x²⁵/₆₄"
10x25x1 cm - 4"x10" x²⁵/₆₄"

Rettificato - Rectified

GIUNTI - JOINTS SUGGESTION



MAPEI 143 Terracotta



MAPEI 145 Terra di Siena



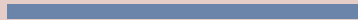
MAPEI 140 Coral Red



MAPEI 149 Volcano Sand



LATICRETE 46 Quarry Red



MAPEI 172 Space Blue



MAPEI 112 Medium Grey



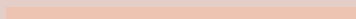
MAPEI 172 Space Blue



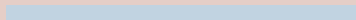
MAPEI 160 Magnolia



MAPEI 132 Beige 2000



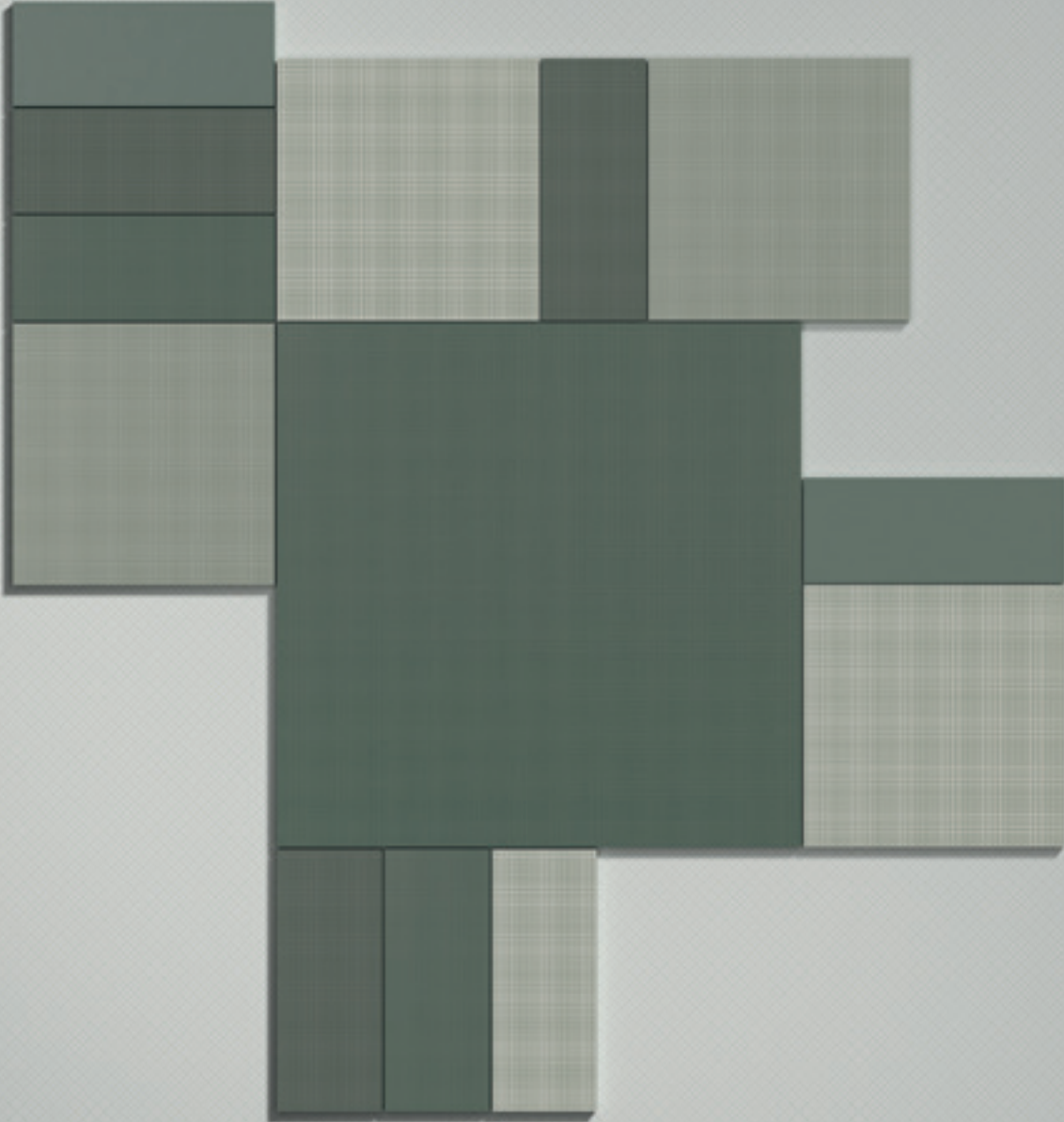
MAPEI 160 Magnolia



MAPEI 170 Crocus Blue

TEXTURE IN SCALA 1:1 - TEXTURE ARE FULL SCALE

GRAPH
COLOR



COLORI - COLOURS



GP 020

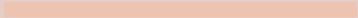
50x50x1 cm - 20"x20"x²⁵/₆₄"
25x25x1 cm - 10"x10"x²⁵/₆₄"
10x25x1 cm - 4"x10"x²⁵/₆₄"

Rettificato - Rectified

GIUNTI - JOINTS SUGGESTION



MAPEI 174 Tornado



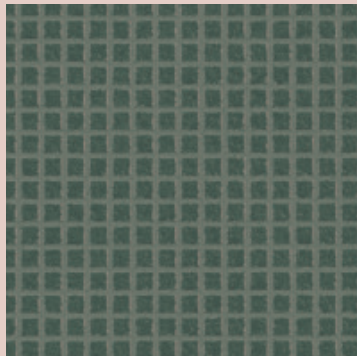
MAPEI 160 Magnolia



MAPEI 162 Violet

TEXTURE IN SCALA 1:1 - TEXTURE ARE FULL SCALE

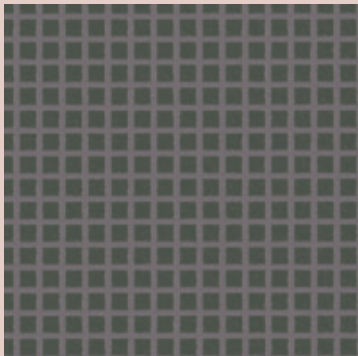
COLORI - COLOURS



GP 021

50x50x1 cm - 20"x20"x²⁵/₆₄"
25x25x1 cm - 10"x10"x²⁵/₆₄"
10x25x1 cm - 4"x10"x²⁵/₆₄"

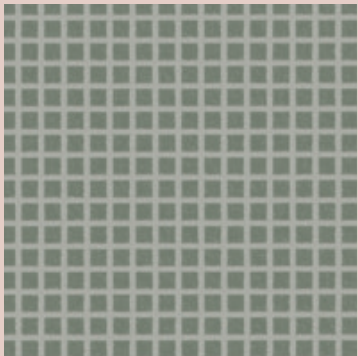
Rettificato - Rectified



GP 022

50x50x1 cm - 20"x20"x²⁵/₆₄"
25x25x1 cm - 10"x10"x²⁵/₆₄"
10x25x1 cm - 4"x10"x²⁵/₆₄"

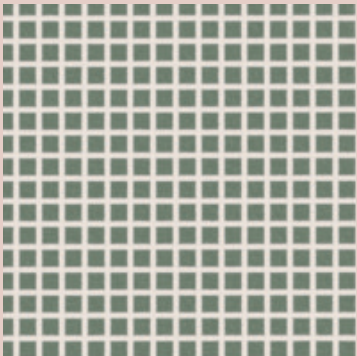
Rettificato - Rectified



GP 023

50x50x1 cm - 20"x20"x²⁵/₆₄"
25x25x1 cm - 10"x10"x²⁵/₆₄"
10x25x1 cm - 4"x10"x²⁵/₆₄"

Rettificato - Rectified



GP 024

50x50x1 cm - 20"x20"x²⁵/₆₄"
25x25x1 cm - 10"x10"x²⁵/₆₄"
10x25x1 cm - 4"x10"x²⁵/₆₄"

Rettificato - Rectified

GIUNTI - JOINTS SUGGESTION



MAPEI 174 Tornado



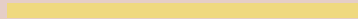
MAPEI 160 Magnolia



MAPEI 171 Turquoise



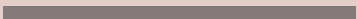
MAPEI 136 Mud



MAPEI 150 Yellow



LATICRETE 53 Twilight Blue



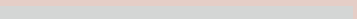
MAPEI 113 Cement Grey



MAPEI 140 Coral Red



MAPEI 160 Magnolia



MAPEI 110 Manhattan 2000



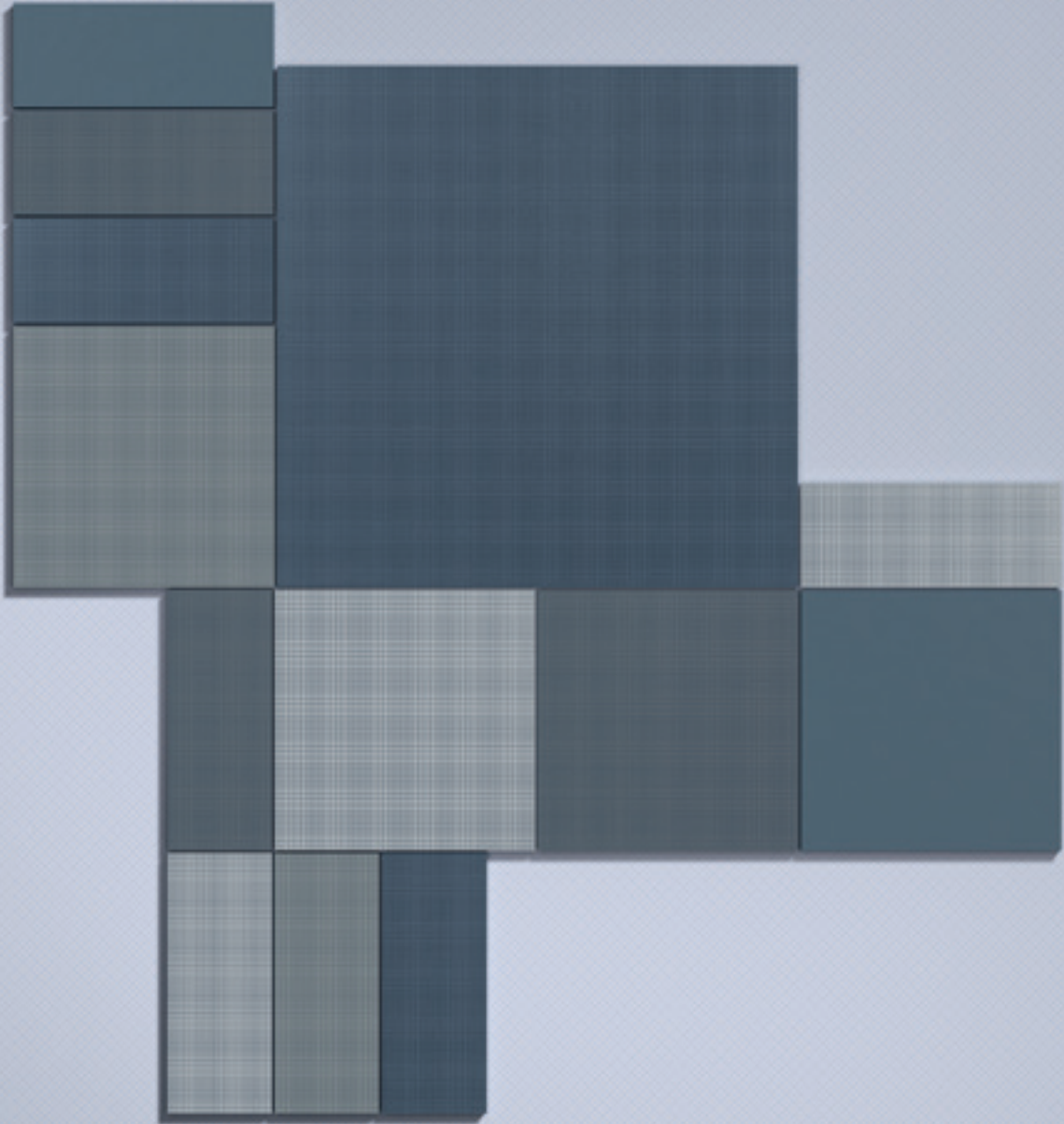
MAPEI 181 Jade Green



MAPEI 160 Magnolia

TEXTURE IN SCALA 1:1 - TEXTURE ARE FULL SCALE

GRAPH
COLOR



COLORI - COLOURS



GP 025

50x50x1 cm - 20"x20"x²⁵/₆₄"
25x25x1 cm - 10"x10"x²⁵/₆₄"
10x25x1 cm - 4"x10"x²⁵/₆₄"

Rettificato - Rectified

GIUNTI - JOINTS SUGGESTION - color GP 020 - GP 025



LATICRETE 53 Twilight Blue



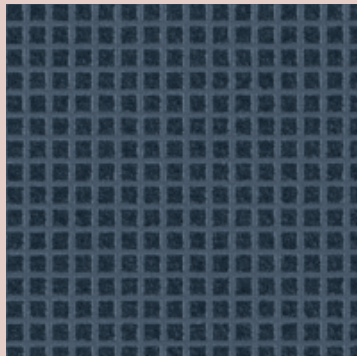
MAPEI 160 Magnolia



MAPEI 143 Terracotta

TEXTURE IN SCALA 1:1 - TEXTURE ARE FULL SCALE

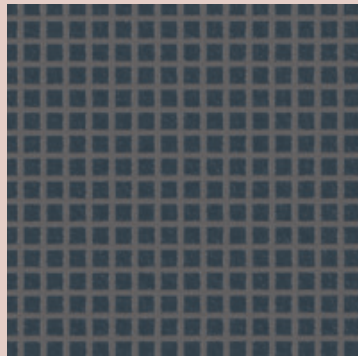
COLORI - COLOURS



GP 026

50x50x1 cm - 20"x20" x²⁵/₆₄"
25x25x1 cm - 10"x10" x²⁵/₆₄"
10x25x1 cm - 4"x10" x²⁵/₆₄"

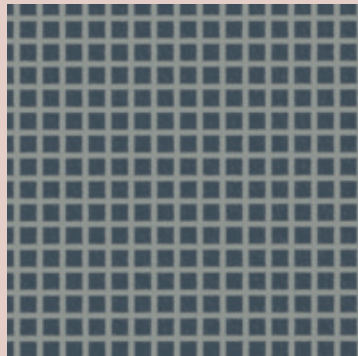
Rettificato - Rectified



GP 027

50x50x1 cm - 20"x20" x²⁵/₆₄"
25x25x1 cm - 10"x10" x²⁵/₆₄"
10x25x1 cm - 4"x10" x²⁵/₆₄"

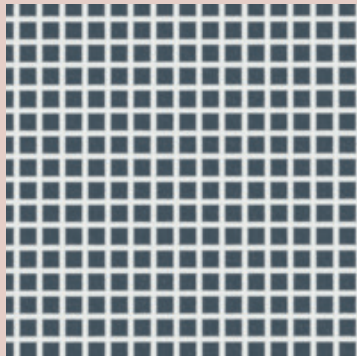
Rettificato - Rectified



GP 028

50x50x1 cm - 20"x20" x²⁵/₆₄"
25x25x1 cm - 10"x10" x²⁵/₆₄"
10x25x1 cm - 4"x10" x²⁵/₆₄"

Rettificato - Rectified



GP 029

50x50x1 cm - 20"x20" x²⁵/₆₄"
25x25x1 cm - 10"x10" x²⁵/₆₄"
10x25x1 cm - 4"x10" x²⁵/₆₄"

Rettificato - Rectified

GIUNTI - JOINTS SUGGESTION



LATICRETE 53 Twilight Blue



MAPEI 160 Magnolia



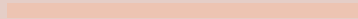
MAPEI 143 Terracotta



MAPEI 174 Tornado



MAPEI 172 Space Blue



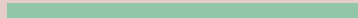
MAPEI 160 Magnolia



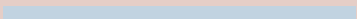
MAPEI 112 Medium Grey



MAPEI 140 Coral Red



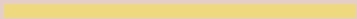
MAPEI 181 Jade Green



MAPEI 170 Crocus Blue



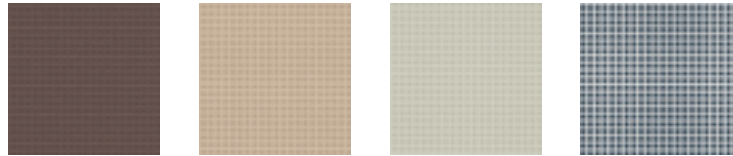
MAPEI 140 Coral Red



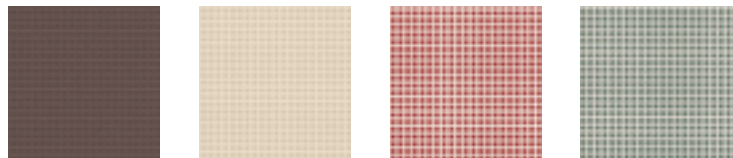
MAPEI 150 Yellow

TEXTURE IN SCALA 1:1 - TEXTURE ARE FULL SCALE

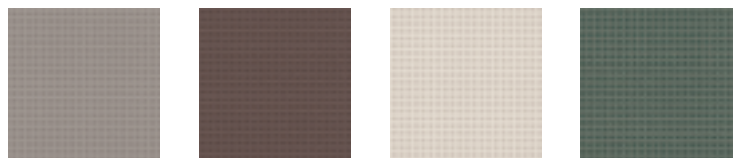
ACCOSTAMENTI CROMATICI
SUGGERITION FOR TILE COMBINATION



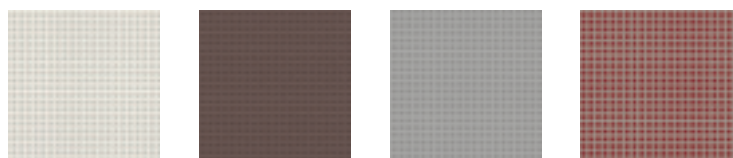
GP 011 GP 014 GP 001 GP 029



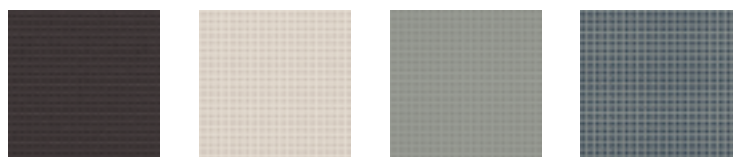
GP 011 GP 013 GP 019 GP 024



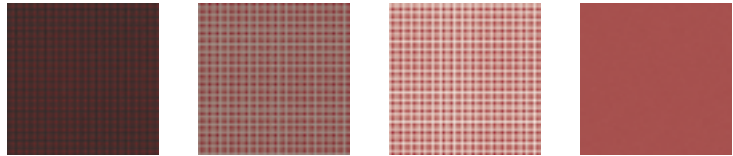
GP 010 GP 011 GP 008 GP 021



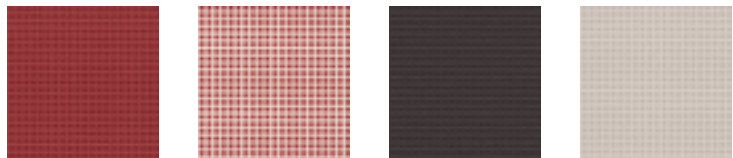
GP 003 GP 011 GP 005 GP 018



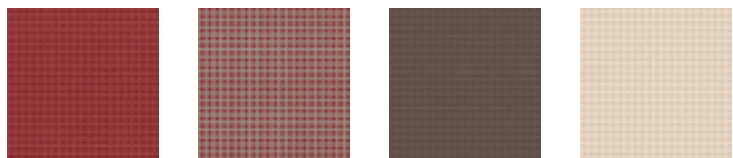
GP 012 GP 008 GP 002 GP 028



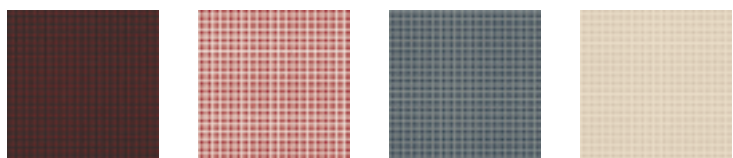
GP 017 GP 018 GP 019 GP 015



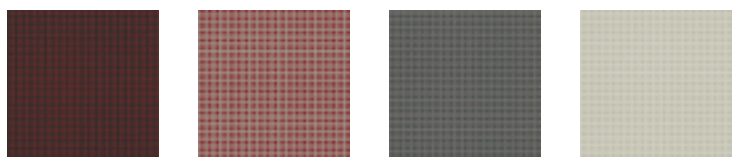
GP 016 GP 019 GP 012 GP 009



GP 016 GP 018 GP 011 GP 013



GP 017 GP 019 GP 028 GP 013

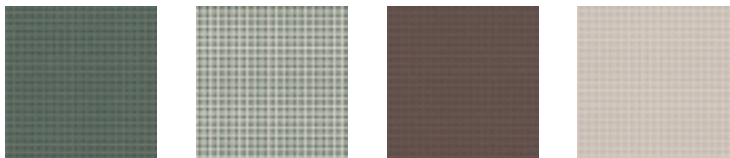


GP 017 GP 018 GP 022 GP 001

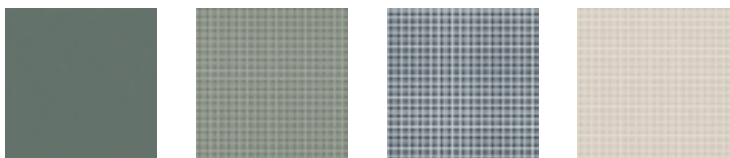
ACCOSTAMENTI CROMATICI
SUGGERITION FOR TILE COMBINATION



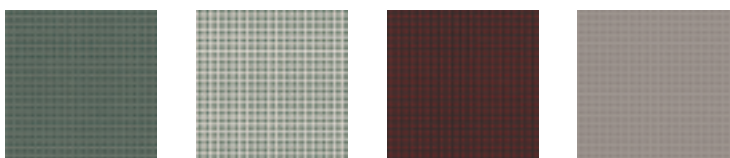
GP 023 GP 021 GP 020 GP 009



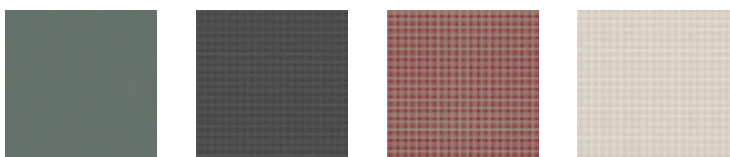
GP 021 GP 024 GP 011 GP 009



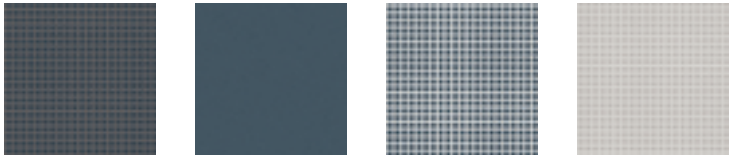
GP 020 GP 023 GP 029 GP 008



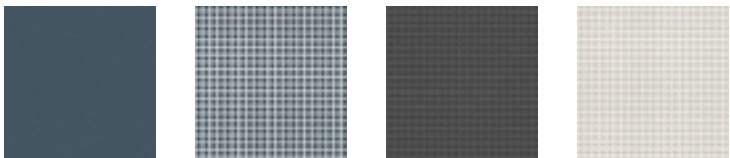
GP 021 GP 024 GP 017 GP 010



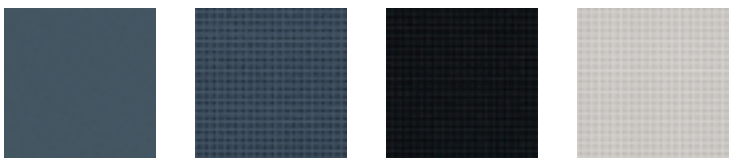
GP 020 GP 006 GP 018 GP 008



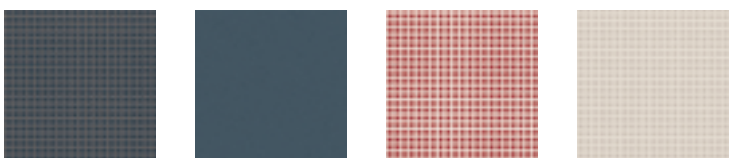
GP 027 GP 025 GP 029 GP 004



GP 025 GP 029 GP 006 GP 003



GP 025 GP 026 GP 007 GP 004



GP 027 GP 025 GP 019 GP 008













GP 027 GP 012 GP 017 GP 009

SCHEDA TECNICHE
TECHNICAL CHARTS






Dimensioni e qualità della superficie / *Dimensions and surface quality*

formato nominale nominal shape	dimensione di fabbricazione actual size		metodo di prova test methods	requisiti requirements		risultati Vogue Vogue results	
50x50 cm (20"x20") 25x25 cm (10"x10") 10x25 cm (4"x10")	lati sides	500x500 mm 249x249 mm 98x249 mm	EN ISO 10545-2	lati sides	± 0,6%	lati sides	± 0,3%
	spessore thickness	10 mm		spessore thickness	± 5%	spessore thickness	± 4%
Rettilineità dei lati (superficie di esercizio) Straightness of sides (working surface)			EN ISO 10545-2	± 0,5%		± 0,4%	
Ortogonalità Squareness			EN ISO 10545-2	± 0,5%		± 0,4%	
Planarità della superficie Flatness			EN ISO 10545-2	± 0,5%		± 0,4%	
Qualità della superficie Surface quality			EN ISO 10545-2	min. 95%		min. 95%	






Proprietà fisiche / *Physical properties*

prova test			metodo di prova test methods	requisiti requirements	risultati Vogue Vogue results
 Massa d'acqua assorbita (%) Water absorption (%)			EN ISO 10545-3	0,5% < E _b ≤ 3,0 %	1,5 %
 Resistenza di rottura Tensile strength	spessore thickness ≥ 7,5 mm		EN ISO 10545-4	1.100 N min.	> 1.700 N
 Modulo di rottura Modulus of rupture			EN ISO 10545-4	30 N/mm2 min.	> 40 N/mm2
 P.E.I. Resistenza all'abrasione (P.E.I.) Abrasion resistance (P.E.I.)			EN ISO 10545-7	riportare la classe di abrasione quote the abrasion class	vedi pagina prodotto refer to product page
 Coefficiente di dilatazione termica lineare Coefficient of linear thermal expansion			EN ISO 10545-8	metodo di prova disponibile test method available	< 6,9x10 ⁻⁶ /°C
 Resistenza agli sbalzi termici Thermal shock resistance			EN ISO 10545-9	metodo di prova disponibile test method available	garantita guaranteed
 Resistenza al cavillo Crazing resitance			EN ISO 10545-11	richiesta required	garantita guaranteed
 Resistenza al gelo Frost resistance			EN ISO 10545-12	metodo di prova disponibile test method available	garantita guaranteed
 Dilatazione dovuta all'umidità Expansion to humidity			EN ISO 10545-10	metodo di prova disponibile test method available	< 0,04%
 Resistenza all'urto Impact resistance			EN ISO 10545-5	metodo di prova disponibile test method available	> 0,6 (vedi appendice P) (see P appendix)



Proprietà antiscivolo / *Non-slip properties* (escluso - *except* GP 015 - GP 020 - GP 025)

prova test	metodo di prova test methods	requisiti requirements					risultati Vogue Vogue results
 determinazione proprietà antiscivolo: Determination of the anti-slip characteristics:	DIN 51130 grado scivolosità non-skid characteristics	R9 aderenza normale normal adhesion 6° ≤ α tot ≤ 10°	R10 aderenza media medium adhesion 10° ≤ α tot ≤ 19°	R11 aderenza elevata high adhesion 19° ≤ α tot ≤ 27°	α = angolo di inclinazione inclination angle	R10	
 determinazione proprietà antiscivolo di zone bagnate a piedi nudi: Determination of the anti-slip characteristics for barefoot wet areas:	DIN 51097 angolo inclinazione (°) inclination angle (°)	A aderenza media medium adhesion ≥ 12 <18	B aderenza elevata high adhesion ≥ 18 < 24	C aderenza forte strong adhesion ≥ 24		A	
 Pendulum test UK	BS 7976-2:2002	metodo di prova disponibile - test method available					dry >36 wet -
 DCOF – Dynamic Coefficient of Friction (Wet Areas Only)	ANSI A 137.1.:2012						≥ 0,42
 coefficiente di attrito: (1) asciutto (cuoio) (2) bagnato (gomma) Coefficient of friction: (1) dry (leather) (2) wet (Rubber)	B.C.R.A.	μ ≤ 0,19 scivolosità pericolosa dangerous slipperiness	0,20 ≤ μ ≤ 0,39 scivolosità eccessiva extreme slipperiness	0,40 ≤ μ ≤ 0,74 attrito soddisfacente satisfactory friction	μ ≥ 0,75 attrito eccellente excellent friction	(1) μ>0,45 (2) μ>0,52	

Proprietà chimiche / *Chemical properties*

prova test	metodo di prova test methods	requisiti requirements	risultati Vogue Vogue results
 Resistenza alle macchie Stain resistance	EN ISO 10545-14	classe 3 min.	3 min. (vedi appendice P) (see P appendix)
 Resistenza ai prodotti chimici d'uso domestico ed agli additivi per piscina Resistance to chemical products for housekeeping and to the additives used in swimming-pools	EN ISO 10545-13	GB min.	GB min.
 Resistenza ad acidi e basi a bassa concentrazione Resistance to acids and bases at low concentrations	EN ISO 10545-13	indicata dal produttore indicated by the producer	GLB min.
 Resistenza ad acidi e basi ad alta concentrazione Resistance to acids and bases at high concentrations	EN ISO 10545-13	metodo di prova disponibile test method available	GHB min.
 Pb Cd Cessione di piombo e cadmio Lead and cadmium losses	EN ISO 10545-15	metodo di prova disponibile test method available	disponibile a richiesta available if required

Altre prove / *Other tests*

prova test	metodo di prova test methods	requisiti requirements	risultati Vogue Vogue results
 Resistenza dei colori alla luce Colour resistance to light	DIN 51094	non previsto not foreseen	garantita guaranteed
 Reazione al fuoco Reaction to the fire	senza prova without test	decisione 96/603/CE decision 96/603/CE	classe A1

Voci di capitolato	Tender specifications	Manutenzione e pulizia	Maintenance
Piastrelle di ceramica pressate a secco con basso assorbimento di acqua (0,5% < Eb ≤ 3%) Gruppo B1b - M - GL EN 14411:2012 appendice H.	Glazed ceramic tiles, dry pressed with low water absorption (0,5% < Eb ≤ 3%) Group B1b - M - GL EN 14411:2012 H appendix.	La qualità di un rivestimento in piastrelle ceramiche dipende, oltre che da una buona progettazione e da una corretta posa, anche dalla cura che verrà rivolta alle superfici. Le piastrelle Ceramica Vogue in grès smaltato in pasta bianca ingelivo sono resistenti, igieniche e facili da pulire, non richiedono particolari cure ma solo l'applicazione di alcune elementari norme di pulizia. È importante distinguere tra pulizia di fine cantiere e pulizia ordinaria.	The quality of a ceramic wall tile depends not only on proper design and laying, but also the care taken of the surface thereafter. Ceramica Vogue frost resistant white body glazed stoneware tiles are hard-wearing, hygienic and easy to clean. They require no particular maintenance other than the application of a number of simple cleaning rules. It is important to distinguish between the cleaning to be carried out when the building work is complete and ordinary cleaning.
Giunto e componibilità dei formati	Modularity and laying		
Per ottenere un corretto risultato di posa il materiale deve essere posato con un giunto non inferiore a 2 mm (UNI 11493:2013).	To obtain a correct laying result the material should be laid with joints of no less than 2 mm (UNI 11493:2013).		
Determinazione della pulibilità e analisi microbatterica	Determination of cleanability and microbacterial analysis		
I materiali di Ceramica Vogue, previa accurata pulizia con prodotti specifici, non favoriscono il proliferare dei batteri (prova di laboratorio disponibile).	Ceramica Vogue materials do not promote the proliferation of bacteria provided they are properly cleaned using appropriate cleaning products (laboratory tests available).		
Marchio CE	CE mark	PULIZIA DI FINE CANTIERE Oltre a mantenere sempre protette le superfici durante la fase di cantiere, è di fondamentale importanza curare la prima pulizia. Questa operazione ha lo scopo di eliminare ogni traccia e residuo di posa dalla superficie delle piastrelle. Prima del lavaggio è importante rimuovere con un aspiratore lo sporco grossolano evitando di rigare la superficie delle piastrelle. La pulizia deve essere fatta con prodotti in commercio tipo Deterdek (www.filachim.com), Keranet (www.mapei.com) o prodotti simili. Si raccomanda di seguire rigorosamente le indicazioni riportate sulle schede tecniche dei prodotti utilizzati e comunque di fare delle prove dei prodotti di pulizia su una piccola porzione di una piastrella prima di eseguire la pulizia totale della superficie. PULIZIA ORDINARIA Per la pulizia ordinaria è bene usare prodotti in grado di eliminare eventuali macchie di sporco senza però intaccare la smaltatura superficiale, evitare quindi sostanze molto aggressive quali prodotti a base acida. Usare semplici prodotti adatti alla pulizia della ceramica. Per migliorare l'efficacia dei detergenti diluirli con acqua calda. NORME GENERALI Sostanze abrasive o strumenti per la pulizia quali spugne abrasive o spazzole eccessivamente dure sono sconsigliati in quanto potrebbero provocare sulla superficie delle piastrelle graffi o segni impossibili poi da eliminare. Sui prodotti con caratteristiche antiscivolo evitare assolutamente l'utilizzo di prodotti lavaincera o cere. Nel caso di locali comunicanti con l'esterno è indispensabile utilizzare zerbini per ridurre l'apporto di agenti abrasivi.	CLEANING AFTER BUILDING WORK IS COMPLETED In addition to keeping surfaces protected during the various phases of the building work, it is of fundamental importance to ensure the tiles are cleaned properly for the first time once the building work is complete. The purpose of this operation is to remove all traces and residue from the laying process from the surface of the tiles. Before washing the tiles, it is important to vacuum off the worst of the dirt, without scratching the surface of the tiles. Cleaning must be done using products such as Deterdek (www.filachim.com), Keranet (www.mapei.com) or similar. The indications on the technical specifications of the products used must be followed very carefully, and all cleaning products should be tested on a small portion of a tile before proceeding to clean the whole surface. ORDINARY CLEANING For ordinary cleaning, it is best to use products able to remove any dirty marks without damaging the surface glaze, avoiding particularly aggressive (e.g. acid-based) products. Use simple products suitable for cleaning ceramics. To improve the efficacy of the cleaning agents, dilute them in hot water. GENERAL RULES Abrasive substances or cleaning instruments such as abrasive sponges or excessively hard brushes should be avoided, because they could scratch the surface or leave marks that will be impossible to remove. On products with anti-slip characteristics, wash and wax or wax products must not be used. For areas that lead directly outdoors, mats must be used in order to limit the abrasive agents brought in.



www.ceramicavogue.it

made in italy

Art direction: Marcante-Testa (UdA)
Immagini 3D: R3Design - Officine Mimesi
Fotolito e stampa: Tecnografica Lomazzo (CO)
Ufficio stampa: info@sabrinagiacchetti.it
Stampato in Italia Marzo 2017

Ceramica VOGUE
è un marchio di

altaeco
GRUPPO INDUSTRIALE



Socio Ordinario
del GBC Italia



Ceramics of Italy

Ceramica VOGUE
SS 143 Loc. Vergnasco
13882 Cerrione (BI) ITALIA
T. +39.015.672.1
Fax +39.015.671.626 (Italia)
Fax +39.015.671.352 (Export)
info@cervogue.com

ПРЕДСТАВИТЕЛЬСТВО В РОССИИ
117292 Москва ул. Дмитрия Ульянова, д.16, к.2, оф. 249
тел. +7 (495) 7249354 - 974 1692
факс +7 (495) 5434261
russia@altaeco.com

Altaeco USA
7121 Austin Ave. Niles, Illinois 60714
info.usa@altaeco.com

Ceramica
VOGUE

TILES FOR ARCHITECTURE

Ceramica
VOGUE

TILES FOR ARCHITECTURE