

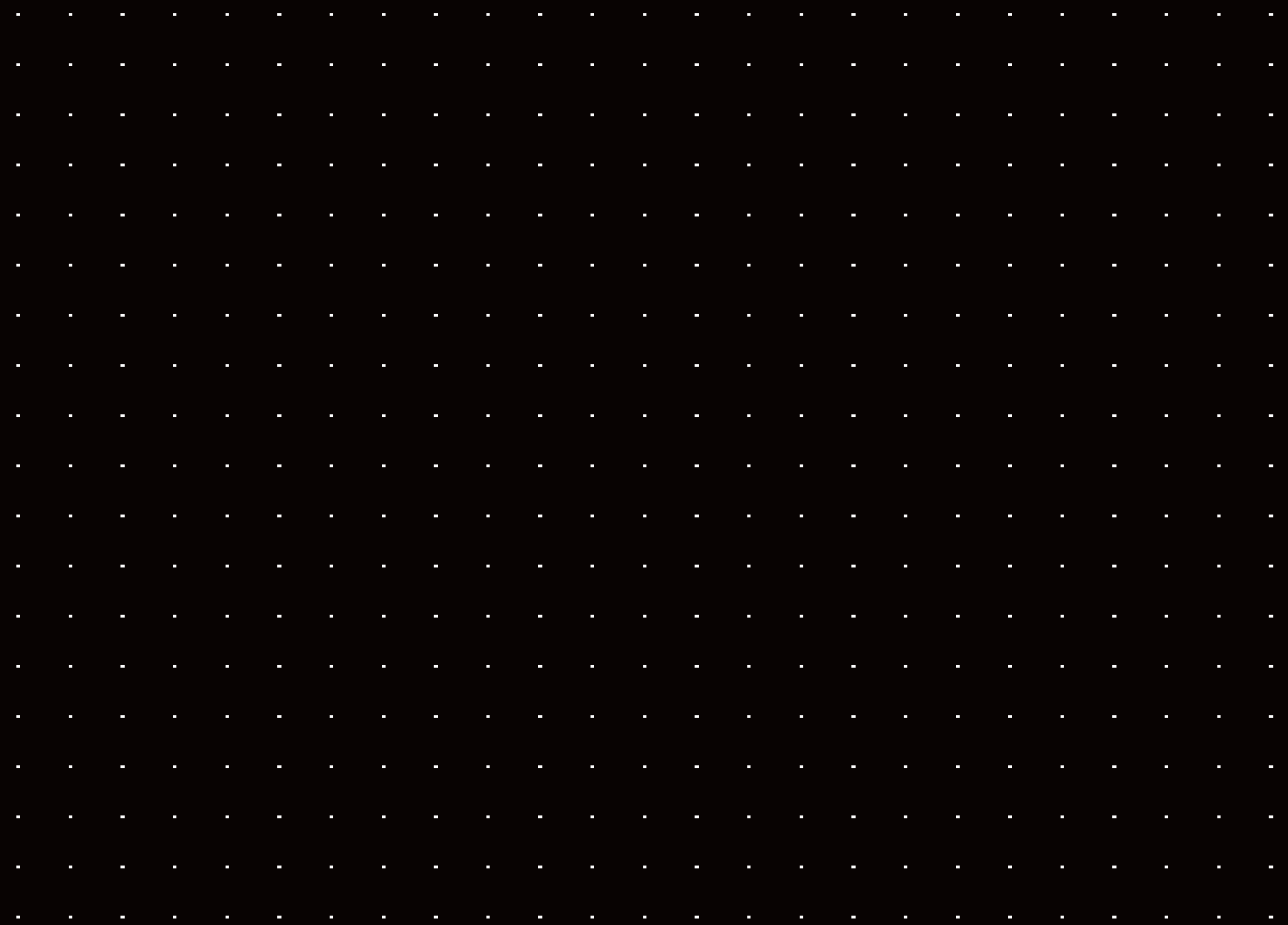
# Shapes of Art

---

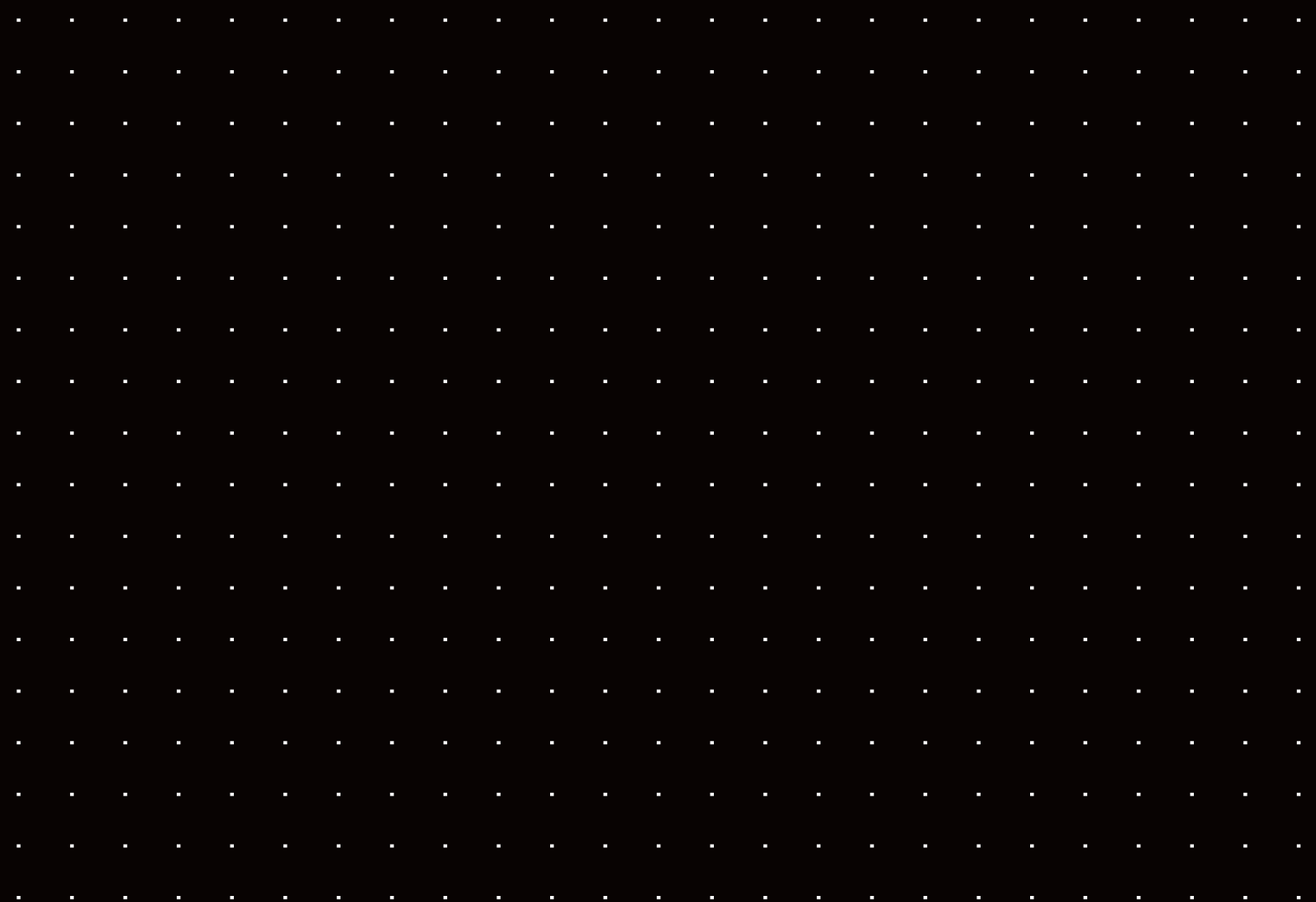
ARTISTIC MOSAIC  
COLLECTION



**TREND®**  
*Born with style*



Explore a beautiful world and...



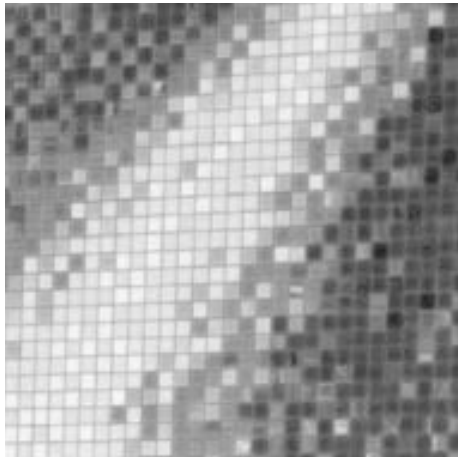
spread art all around.

CONTENTS



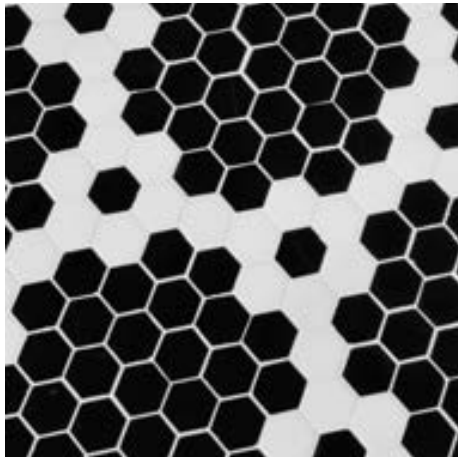
ARTISTIC  
ARTWALLS\_7

FLUTE\_7  
LYRIC\_13  
CARILLON\_19  
ARIA\_25  
LYRA\_33  
JINGLE\_39



CAD  
ARTWALLS\_45

STEAM\_46  
WATERCOLOR\_53  
VELVET\_57



HEXAGONAL  
DECORS\_59

HYPNOTIC\_61  
FROST\_63  
FIELD\_65  
DOTS\_67  
MIXES AND SHADING BLENDS\_69



TECHNICAL  
INFORMATION\_75

ARTISTIC\_77  
CAD\_83  
HEXAGONAL\_87



FLUTE



Flute 2 | Artistic mosaic (1 x 1 cm | 3/8" x 3/8")



---

## FLUTE

A decoration  
composed as a  
symphony of art  
lives forever  
like a song.

Flute 1 | Artistic mosaic (1 x 1 cm | 3/8" x 3/8")



---

# FLUTE



Flute 1 | Artistic mosaic (1 x 1 cm | 3/8" x 3/8")



---

## LYRIC

The accent that brings  
harmony and balance  
to your space inspires  
art and lasts forever.



LYRIC

LYRIC 1



LYRIC 2



Lyric 2 | Artistic mosaic (1 x 1 cm | 3/8" x 3/8")



LYRIC



Lyric 3 | Artistic mosaic (1 x 1 cm | 3/8" x 3/8")





Carillon 1 | Artistic mosaic (1 x 1 cm | 3/8" x 3/8")



CARILLON



Carillon 1 | Artistic mosaic (1 x 1 cm | 3/8" x 3/8")



CARILLON



Photo by Annie Spratt



Carillon 2 | Artistic mosaic (1 x 1 cm | 3/8" x 3/8")





---

## ARIA

The radiance of  
the cloud and the  
singing of the bird  
make your day  
a beautiful journey.

Aria 1 A | Artistic mosaic (1 x 1 cm | 3/8" x 3/8")



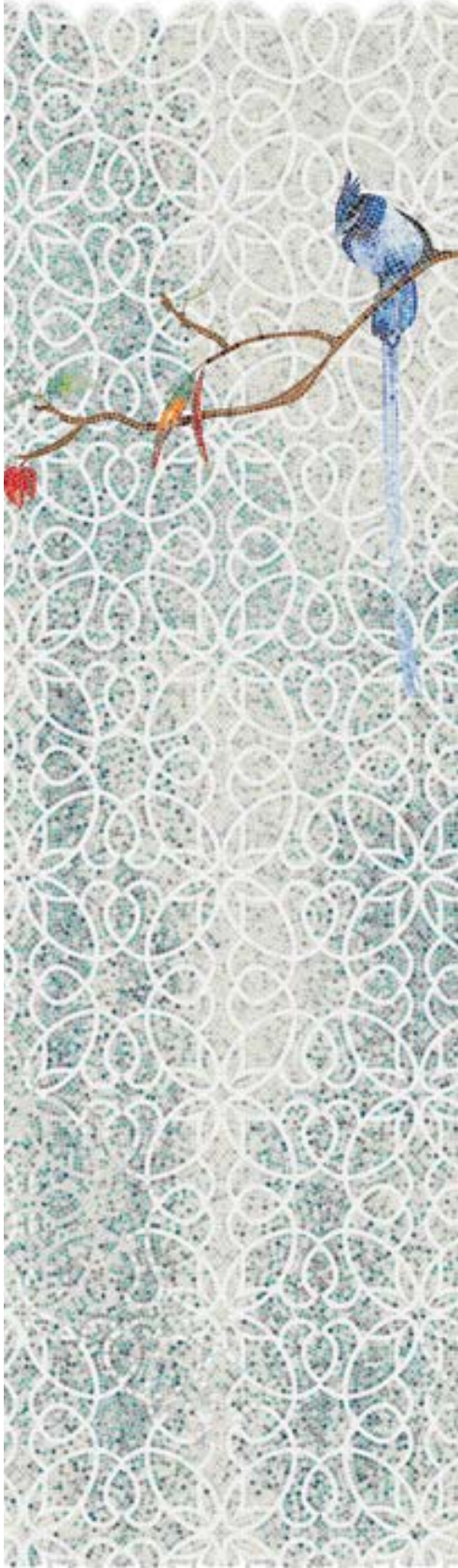
---

# ARIA

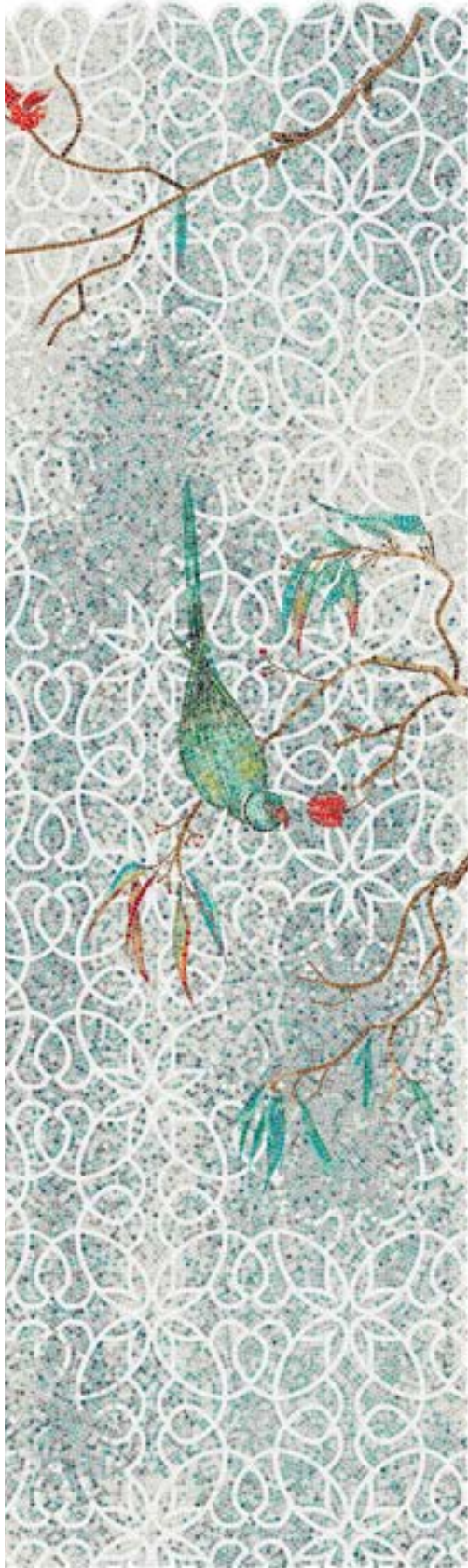
ARIA 1 A



ARIA 1 B



ARIA 1 C



ARIA 1 D



ARIA 1 E



ARIA 1 F





---

# ARIA



Aria 2 B | Artistic mosaic (1 x 1 cm | 3/8" x 3/8")

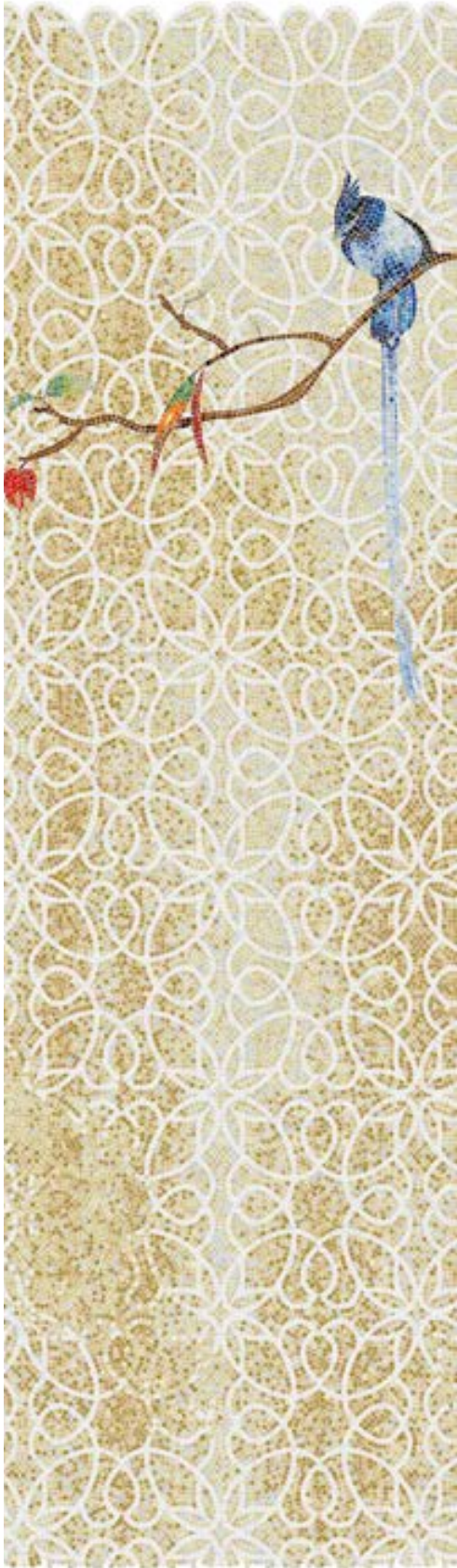


ARIA

ARIA 2 A



ARIA 2 B



ARIA 2 C



ARIA 2 D



ARIA 2 E



ARIA 2 F







Lyra 1 | Artistic mosaic (1 x 1 cm | 3/8" x 3/8")

---

LYRA





LYRA

LYRA 1





LYRA

LYRA 2



Lyra 2 | Artistic mosaic (1 x 1 cm | 3/8" x 3/8")



# JINGLE

JINGLE 1



Jingle 1 | Artistic mosaic (1 x 1 cm | 3/8" x 3/8")



# JINGLE

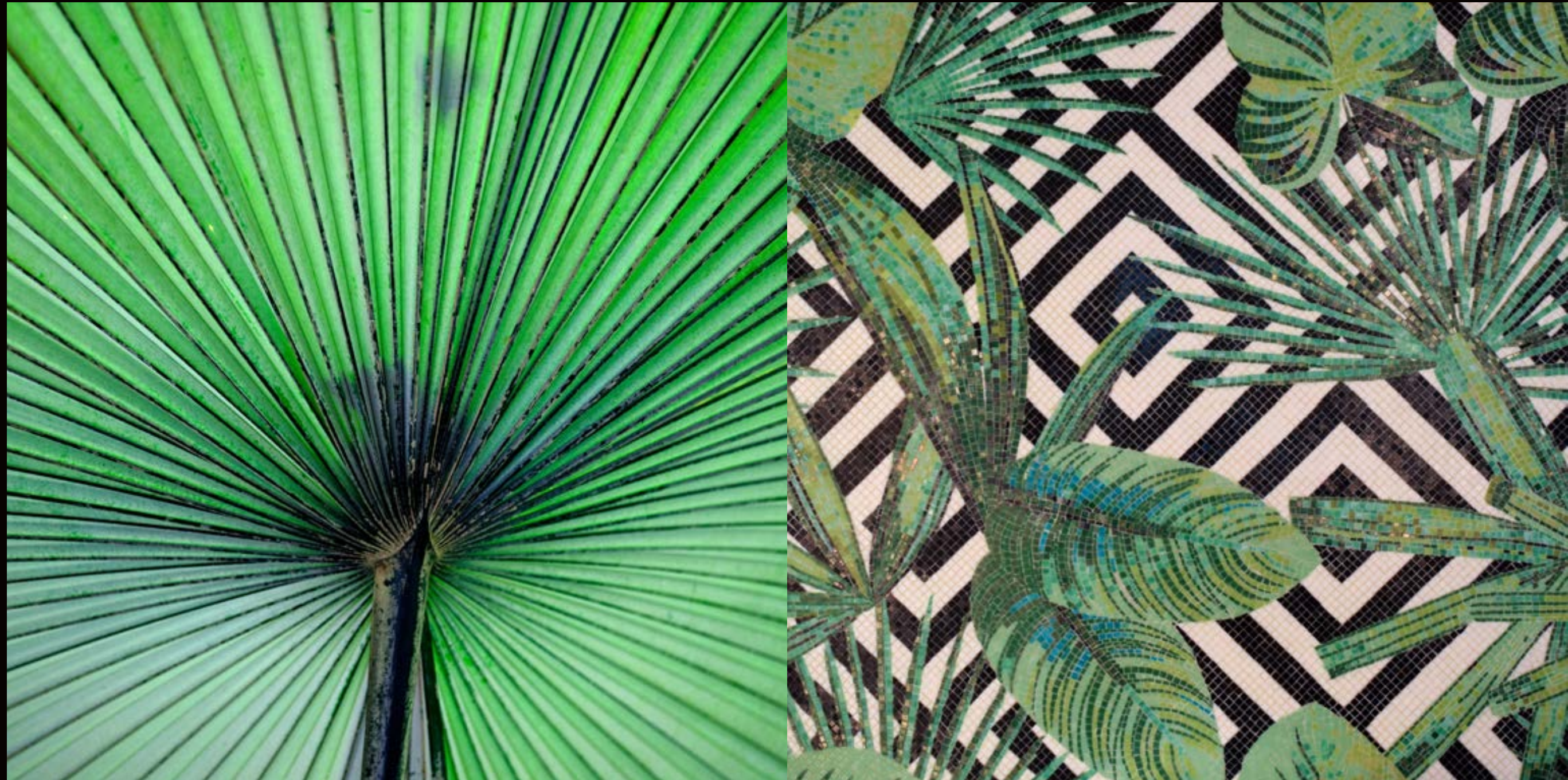


Photo by Rowan Heuvel

Jingle 2 | Artistic mosaic (1 x 1 cm | 3/8" x 3/8")



# JINGLE

Grateful and joyful,  
the glory of art endures  
in the depths of the  
human soul.



Jingle 1 | Artistic mosaic (1 x 1 cm | 3/8" x 3/8")

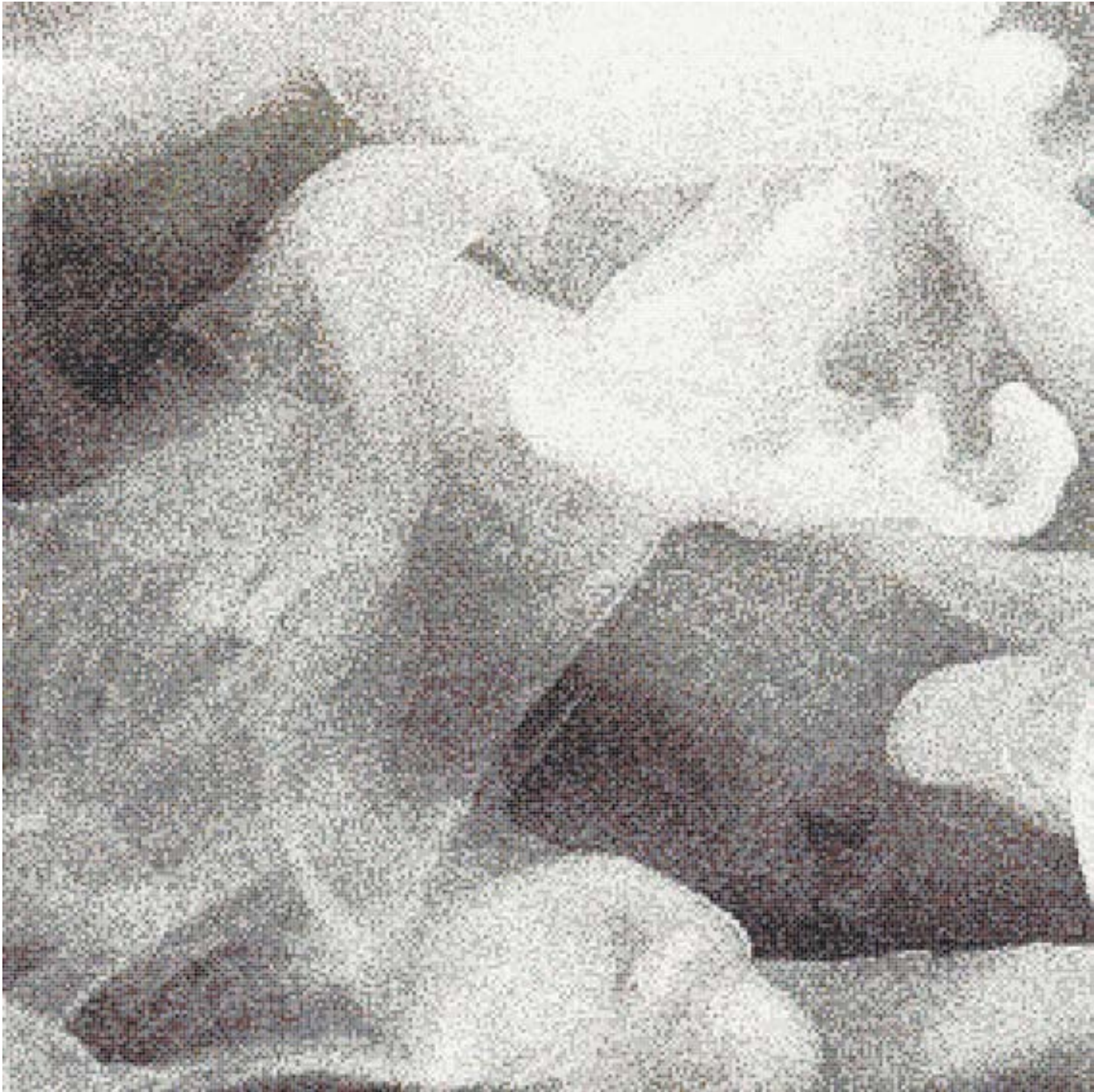


It's easy to get lost in  
the amazing spectacle  
of these mosaics.



STEAM

Steam 1 | CAD mosaic (1 x 1 cm | 3/8" x 3/8")







Steam 2 | CAD mosaic (1 x 1 cm | 3/8" x 3/8")



---

# STEAM



Steam 2 | CAD mosaic (1 x 1 cm | 3/8" x 3/8")



---

# WATERCOLOR

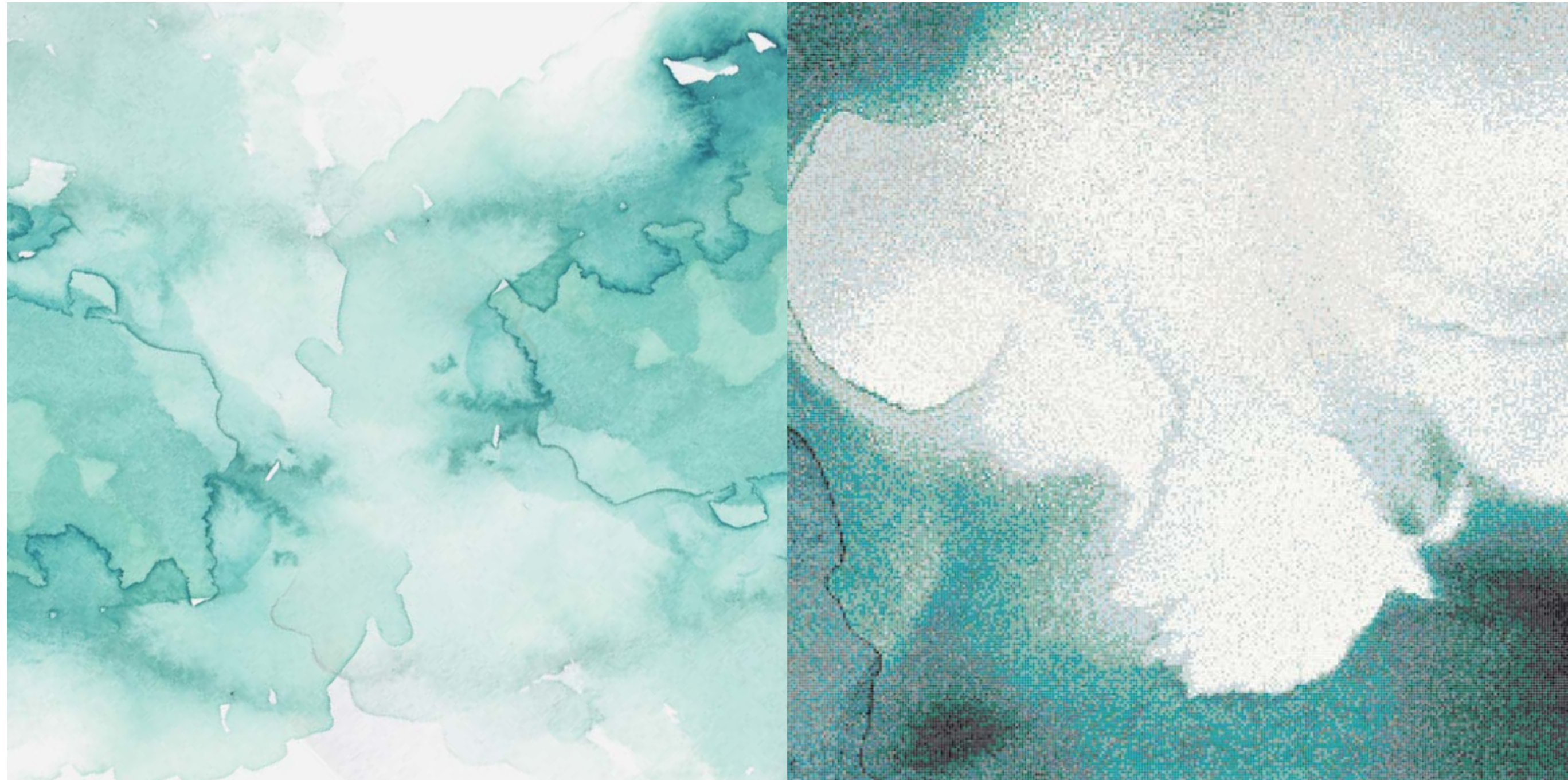


Watercolor 1 | CAD mosaic (1 x 1 cm | 3/8" x 3/8")



---

# WATERCOLOR



Watercolor 1 | CAD mosaic (1 x 1 cm | 3/8" x 3/8")



WATERCOLOR

Watercolor 2 | CAD mosaic (1 x 1 cm | 3/8" x 3/8")



Watercolor 2 | CAD mosaic (1 x 1 cm | 3/8" x 3/8")

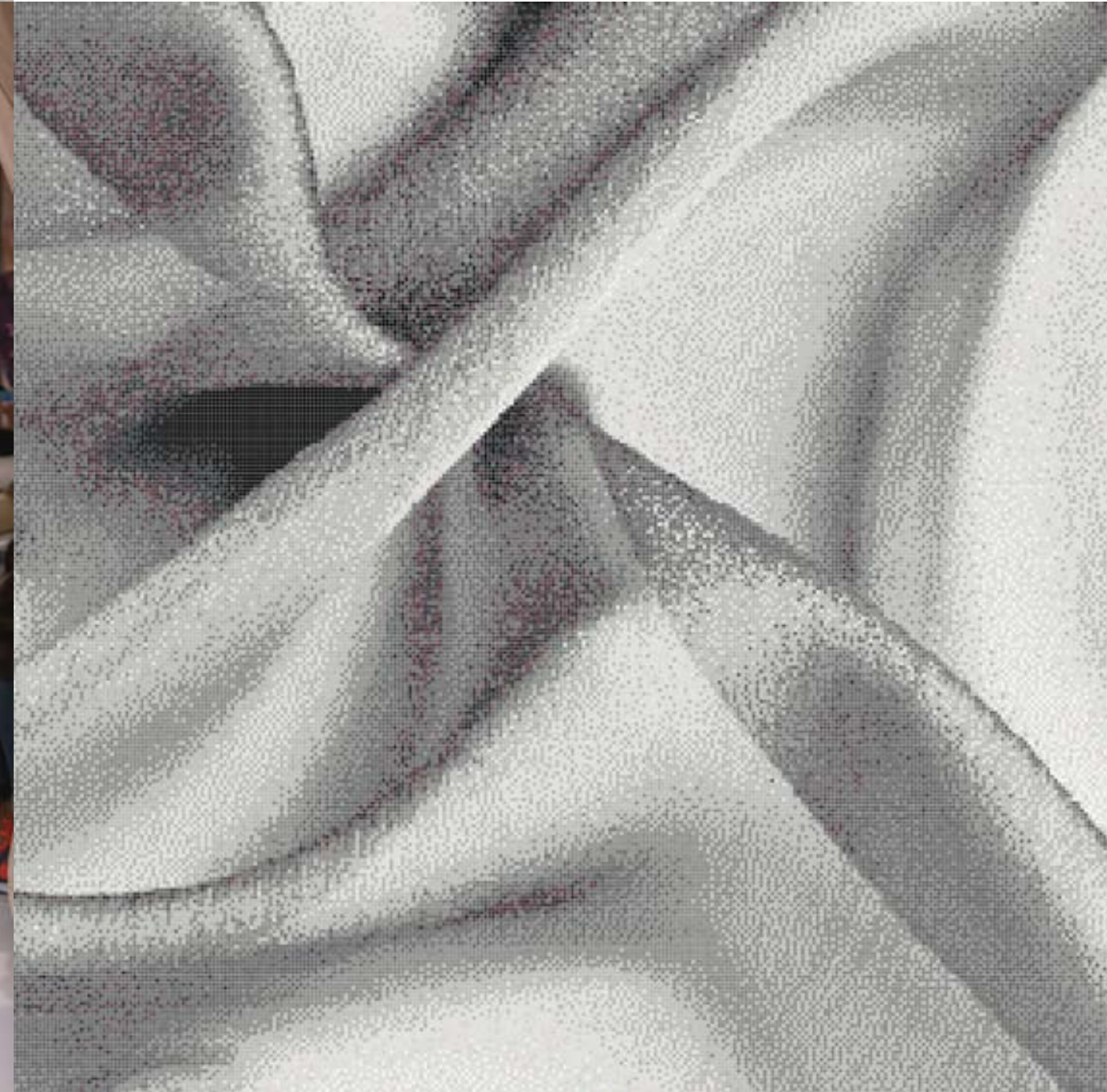




---

## VELVET

Evoke emotion  
with statement  
pieces rich  
in depth and  
intensity.



Velvet 1 | CAD mosaic (1 x 1 cm | 3/8" x 3/8")





Velvet 2 | CAD mosaic  
(1 x 1 cm | 3/8" x 3/8")



---

# VELVET



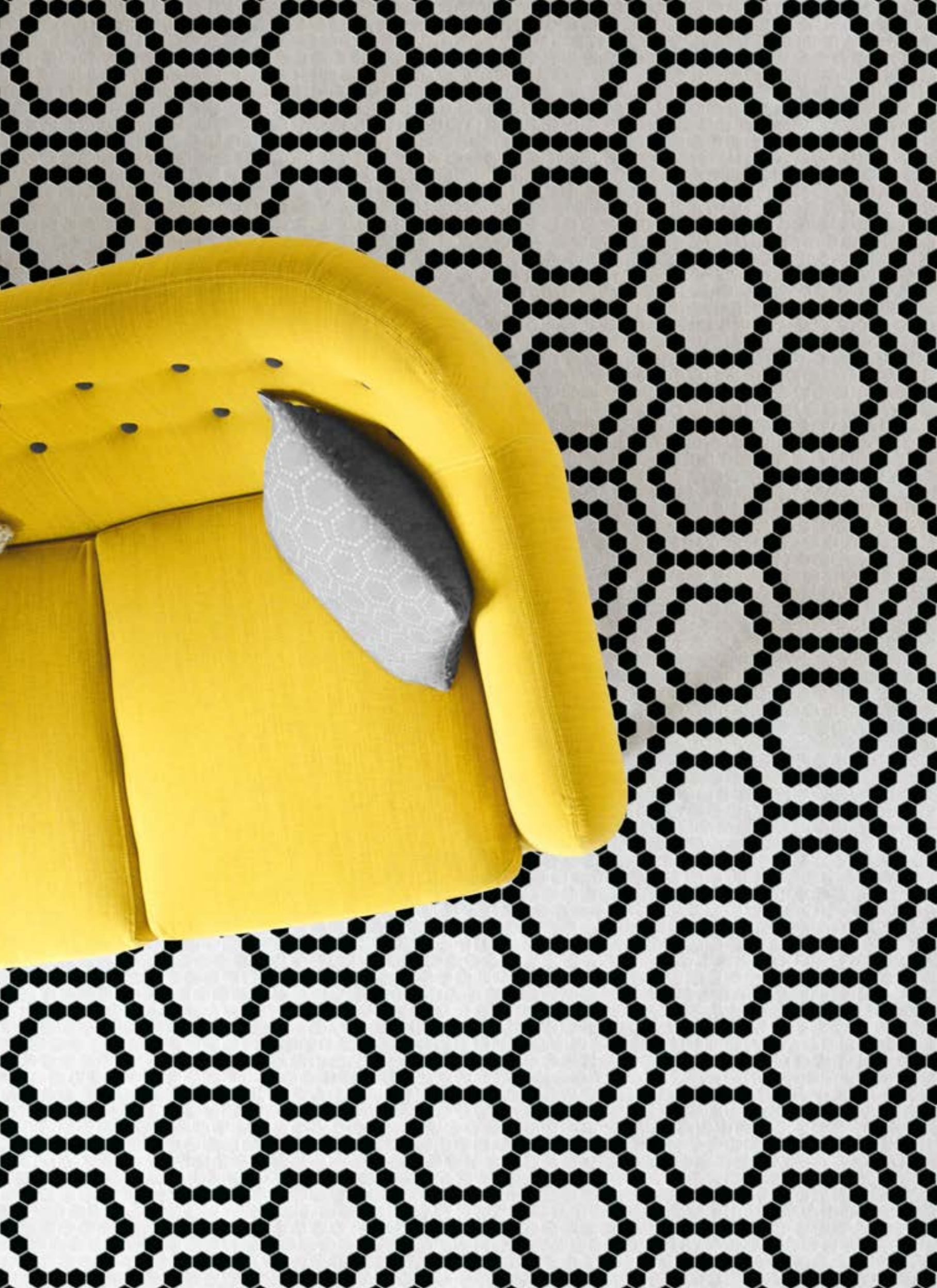
Velvet 2 | CAD mosaic (1 x 1 cm | 3/8" x 3/8")



The page features a solid orange background. On the left side, there are ten thick, white vertical lines of equal height, extending from the top to the bottom of the page. On the right side, there are thirty thin, white vertical lines of equal height, also extending from the top to the bottom. The text is positioned in the upper left quadrant, between the thick lines and the thin lines.

TREND wishes  
to convey beauty  
and simplicity to  
people so that  
they may express  
their maximum  
creative potential.





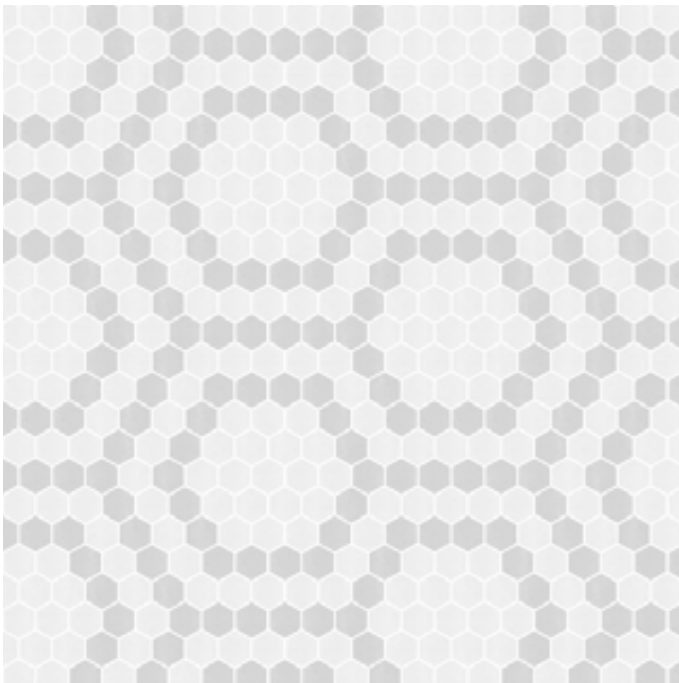
Hexagonal  
figures overlap  
in a fashionable  
way that evokes  
a splendidorous  
sensation



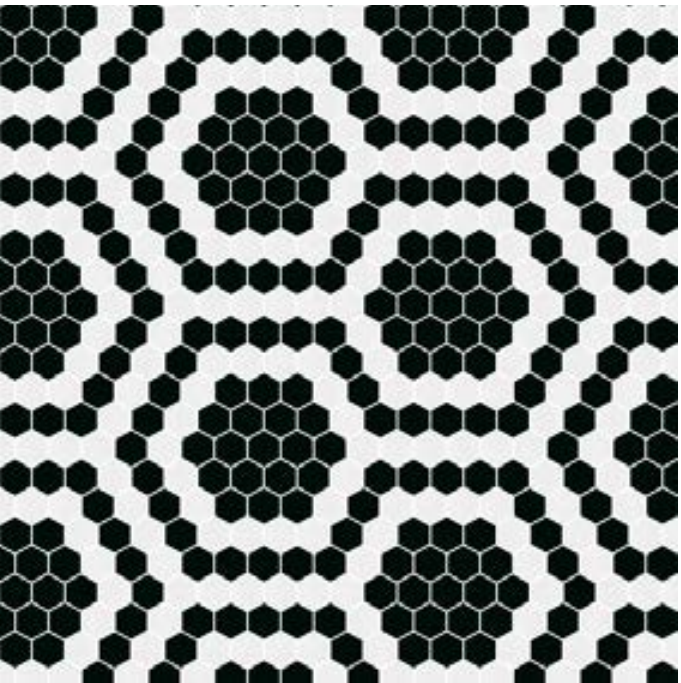
HYPNOTIC



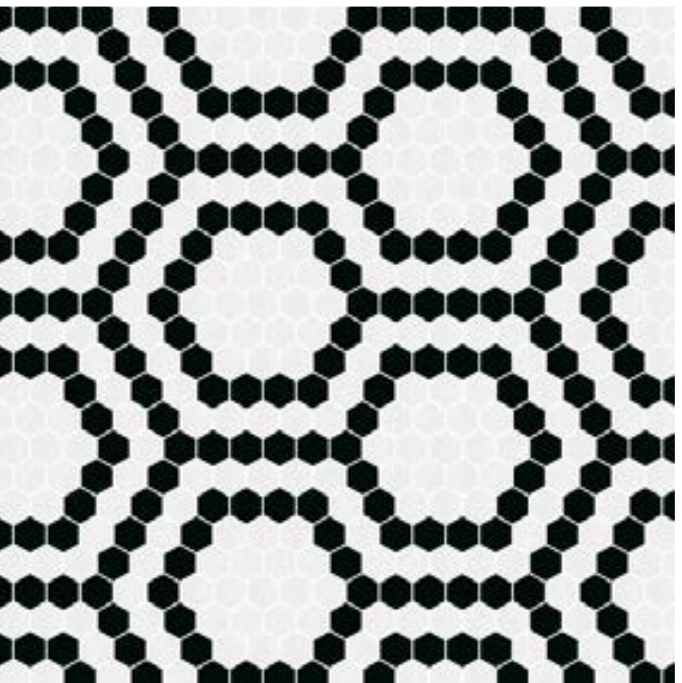
HYPNOTIC 3



HYPNOTIC 2



HYPNOTIC 1



Hypnotic 1 | Hexagonal mosaic 3 x 3,5 cm | 1 3/16" x 1 3/8"

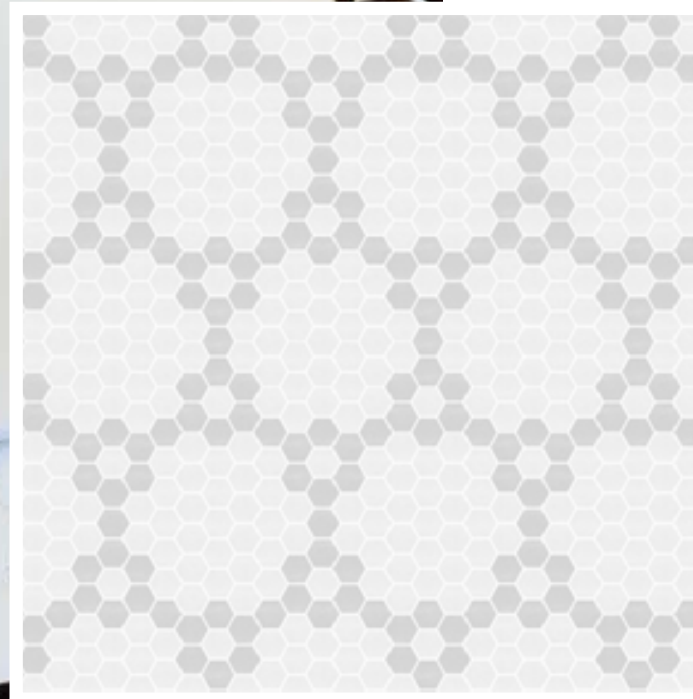




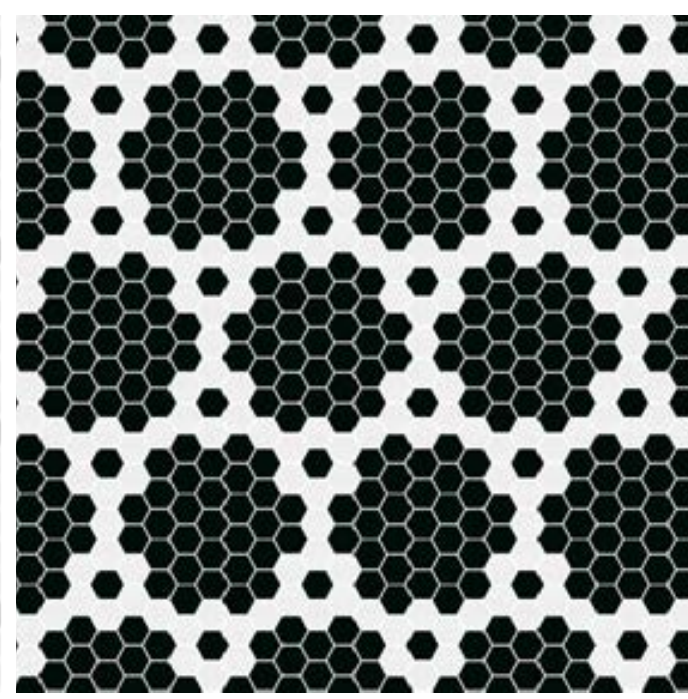
---

# FROST

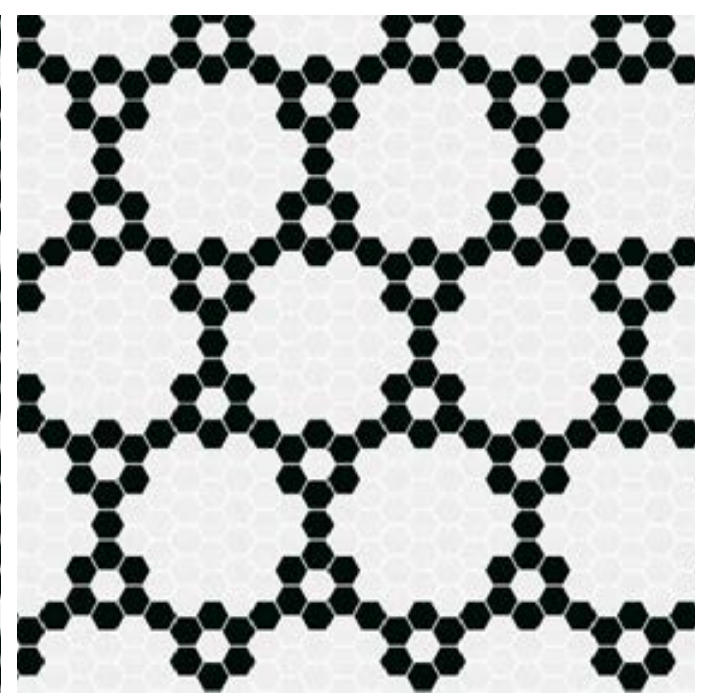
FROST 3



FROST 2



FROST 1



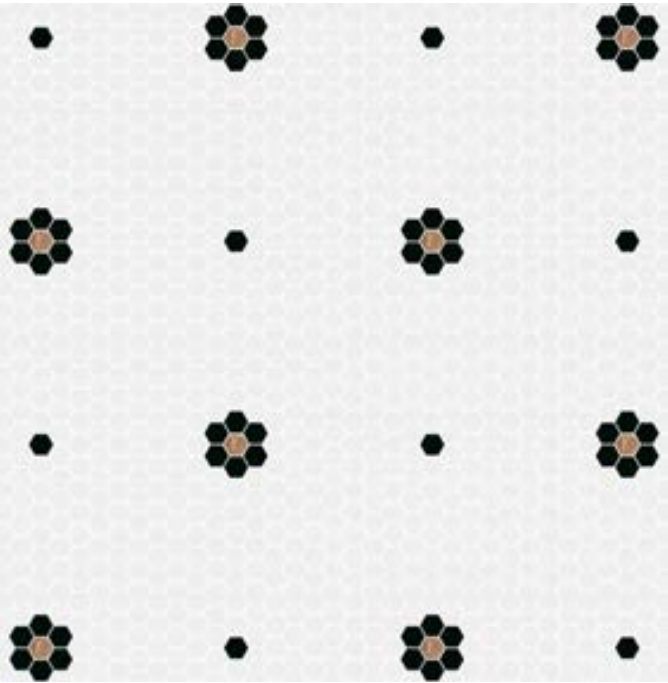




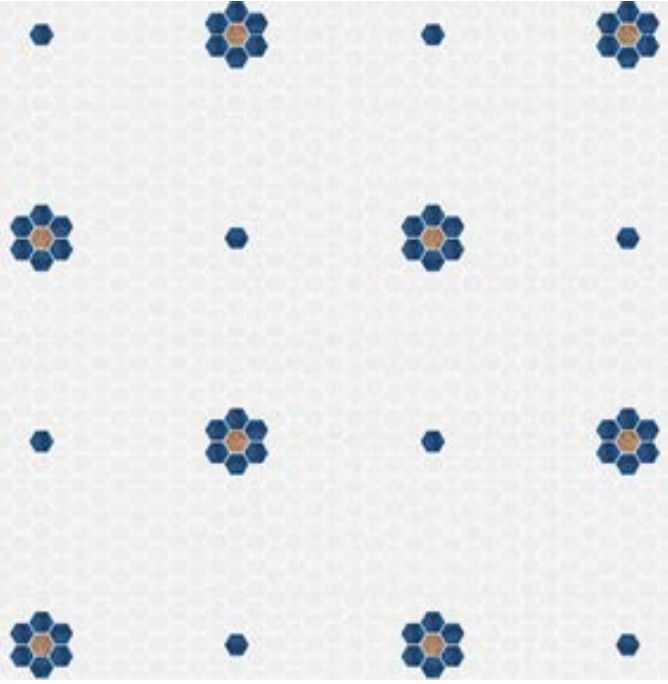
Field 1 | Hexagonal mosaic 3 x 3,5 cm | 1 3/16" x 1 3/8"

FIELD

FIELD 1



FIELD 2



FIELD 3

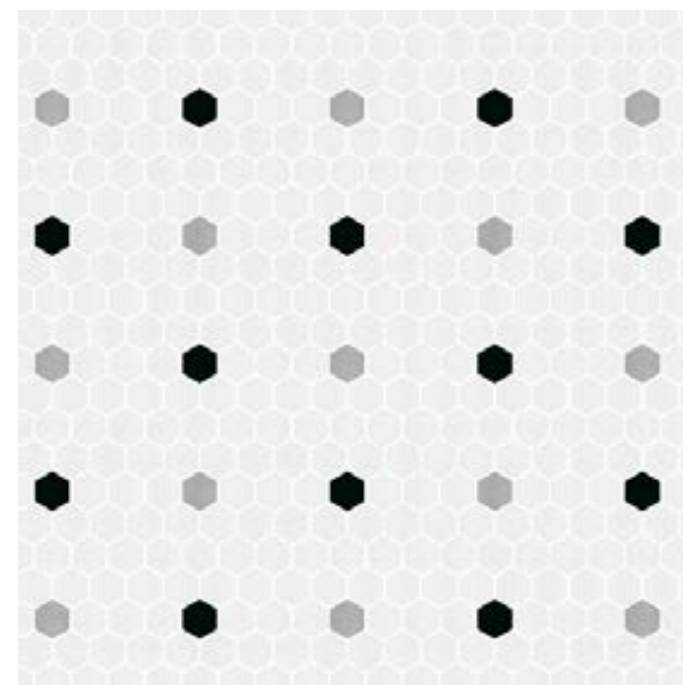




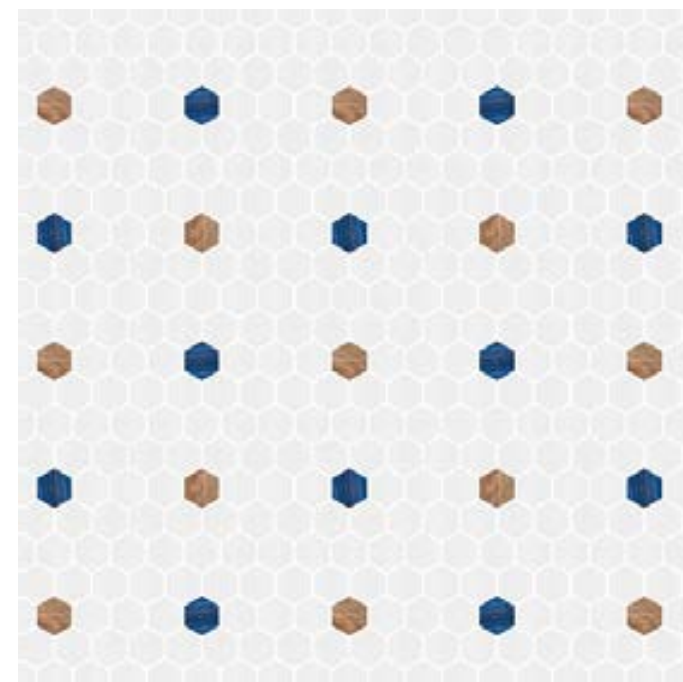


Dots 1 | Hexagonal mosaic 3 x 3,5 cm | 1 3/16" x 1 3/8"

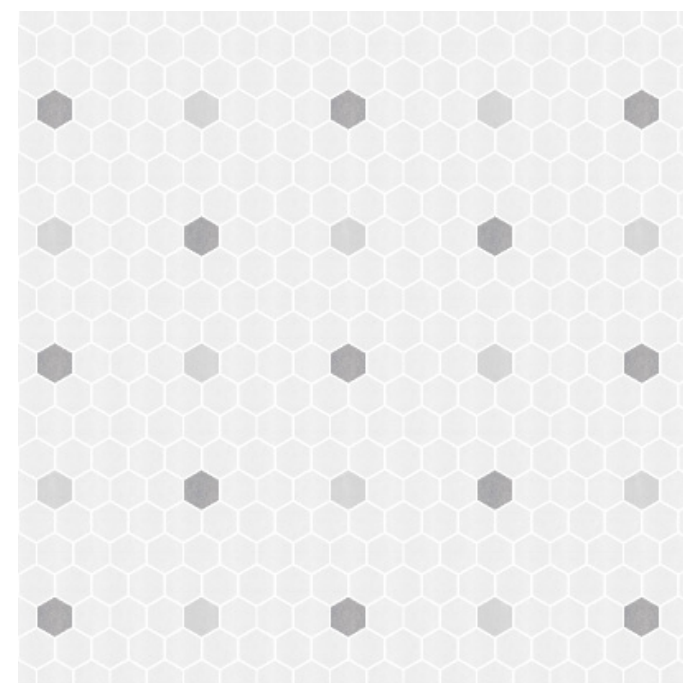
## DOTS



DOTS 1



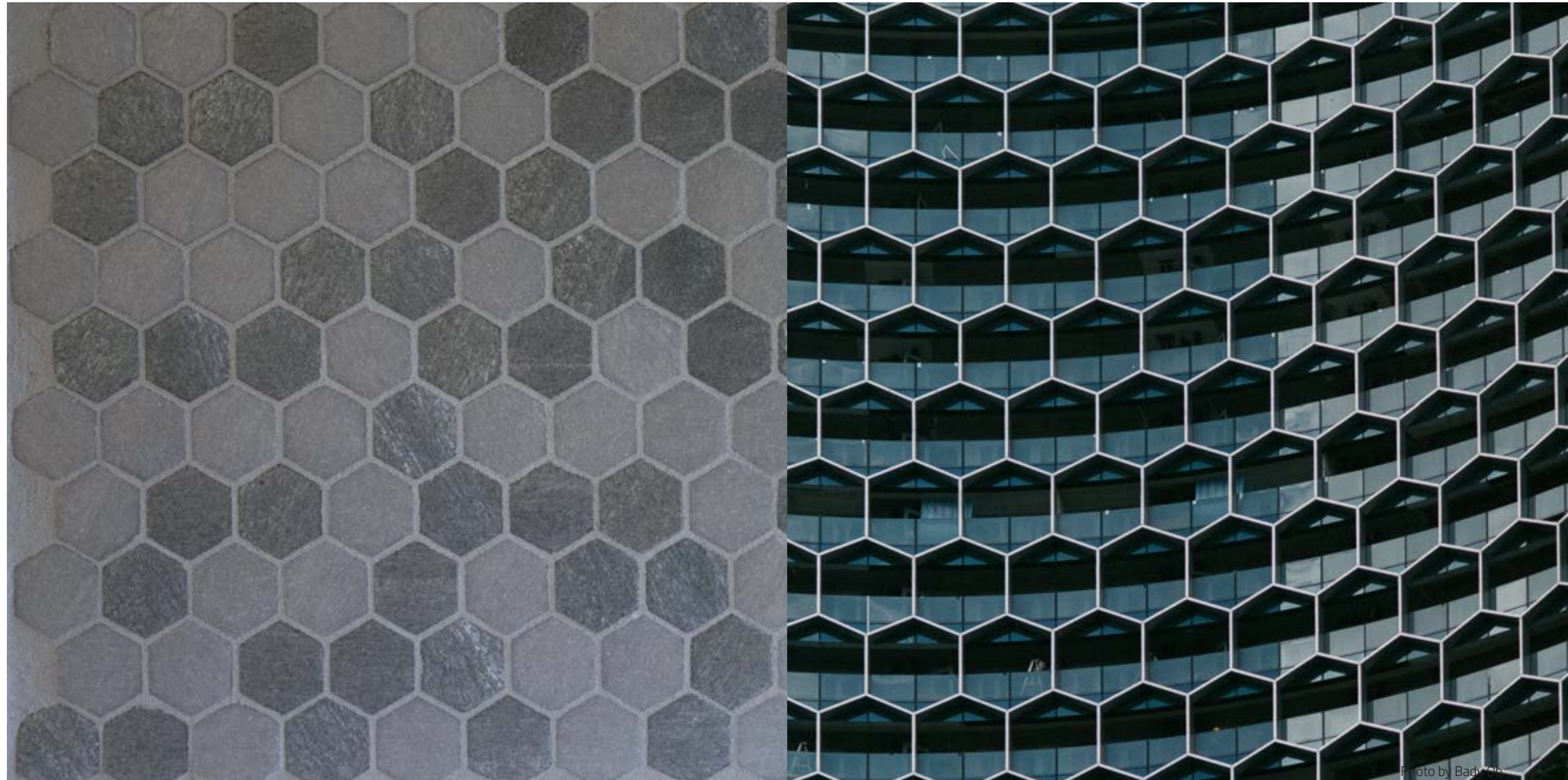
DOTS 2



DOTS 3



Original design and unique ideas merge  
to create charisma and elegance.



Lead mix | Hexagonal mosaic 3 x 3,5 cm | 1 3/16" x 1 3/8"



## HEXAGONAL MIXES & SHADING BLENDS



HEX 160



Carpet with HEX 160



Talc mix



HEXAGONAL MIXES



Lead, Cosmos and Ash mixes | Hexagonal mosaic 3 x 3,5 cm | 1 3/16" x 1 3/8"

Soil, Ash and Caramel mixes | Hexagonal mosaic 3 x 3,5 cm | 1 3/16" x 1 3/8"





## TECHNICAL INFORMATION

---



FLUTE

Artistic mosaic (1 x 1 cm | 3/8" x 3/8")  
Modular size: 252,8 x 158 cm | 99 1/2" x 162 3/16"



LYRIC

Artistic mosaic (1 x 1 cm | 3/8" x 3/8")  
Modular size: 126,4 x 252,8 cm | 49 3/4" x 99 1/2"





CARILLON

Artistic mosaic (1 x 1 cm | 3/8" x 3/8") | Modular size: 252,8 x 126,4 cm | 99 1/2" x 49 3/4"



JINGLE

Artistic mosaic (1 x 1 cm | 3/8" x 3/8")  
Modular size: 126,4 x 126,4 cm | 49 3/4" x 49 3/4"



LYRA

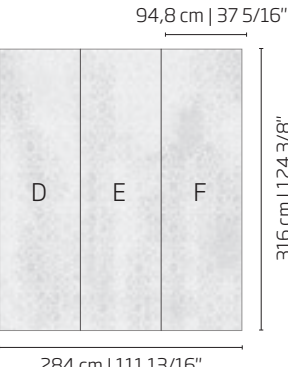
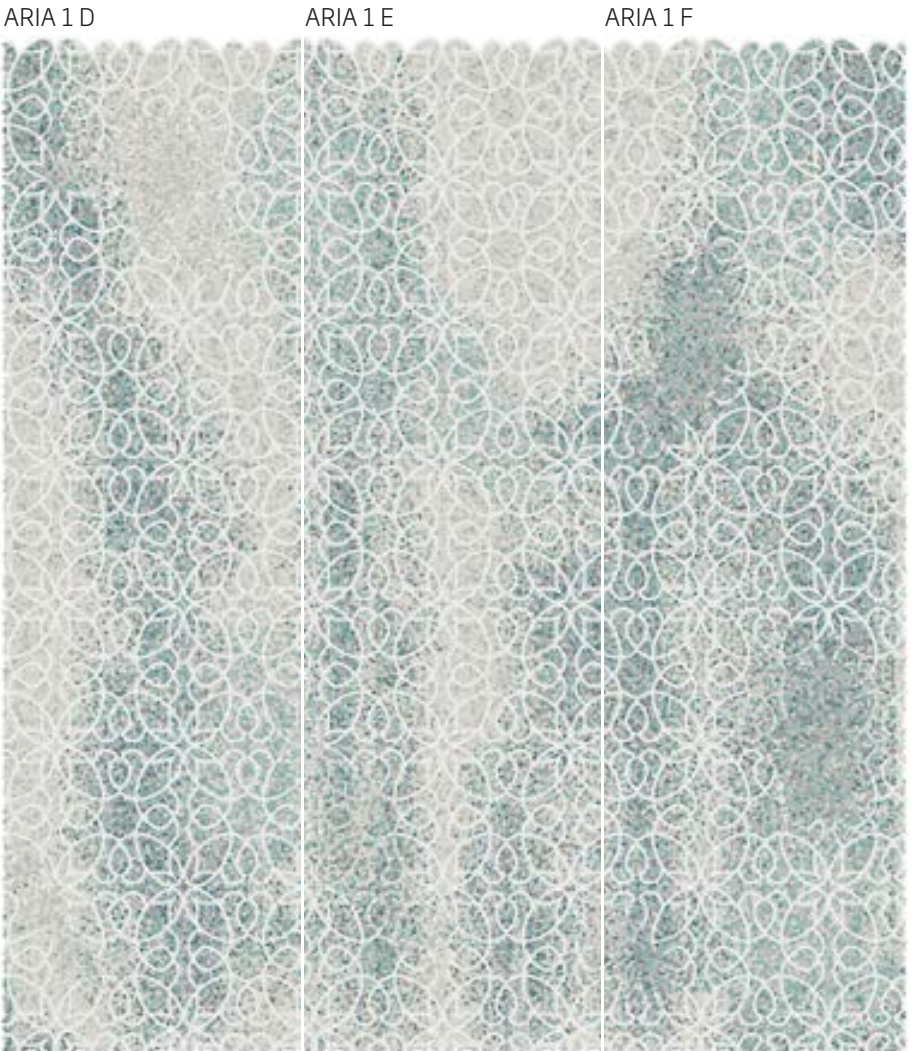
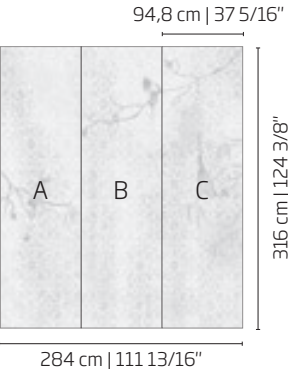
Artistic mosaic (1 x 1 cm | 3/8" x 3/8") | Modular size: 379,2 x 316 cm | 149 5/16" x 124 3/8"



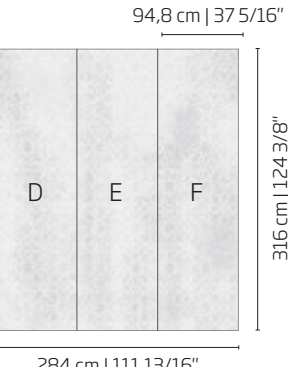
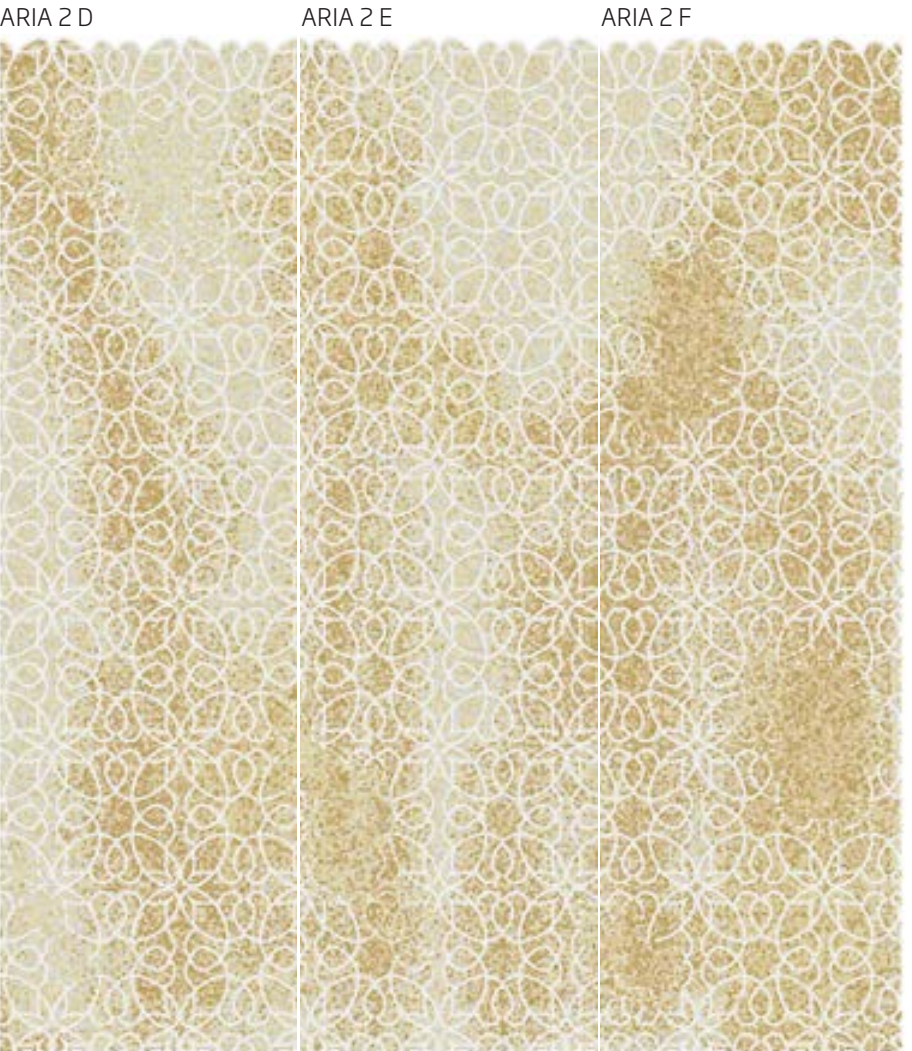
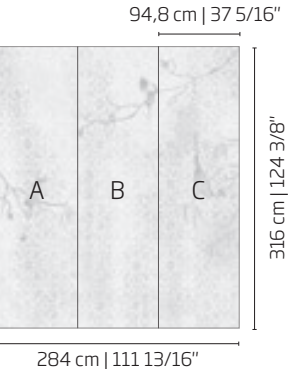




**ARIA 1**  
Artistic mosaic (1 x 1 cm | 3/8" x 3/8")  
Modular size: 94,8 x 316 cm | 37 5/16" x 124 3/8"



**ARIA 2**  
Artistic mosaic (1 x 1 cm | 3/8" x 3/8")  
Modular size: 94,8 x 316 cm | 37 5/16" x 124 3/8"





STEAM

CAD mosaic (1 x 1 cm | 3/8" x 3/8") | Modular size: 505,6 x 316 cm | 199 1/16" x 124 3/8"



VELVET 1

CAD mosaic (1 x 1 cm | 3/8" x 3/8") | Modular size: 758,4 x 316 cm | 298 9/16" x 124 3/8"



VELVET 2

CAD mosaic (1 x 1 cm | 3/8" x 3/8") | Modular size: 442,4 x 316 cm | 174 3/16" x 124 3/8"







# WATERCOLOR

CAD mosaic (1 x 1 cm | 3/8" x 3/8") | Modular size: 663,6 x 316 cm | 261 1/4" x 124 3/8"

WATERCOLOR 1

+ Crystal 



316 cm | 124 3/8"

663,6 cm | 261 1/4"

WATERCOLOR 2

+ Crystal 



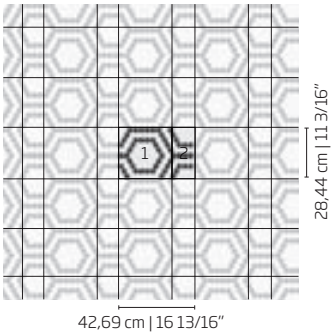
316 cm | 124 3/8"

663,6 cm | 261 1/4"

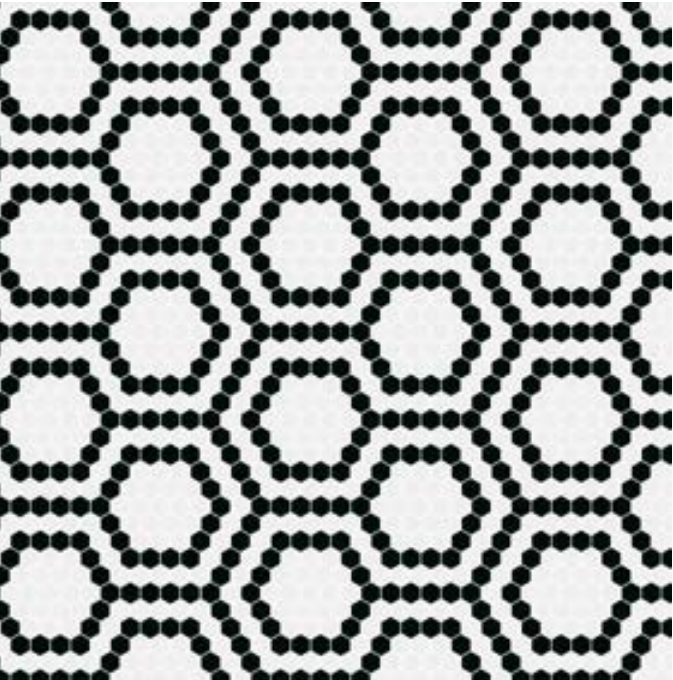


HYPNOTIC

Hexagonal mosaic 3 x 3,5 cm | 1 3/16" x 1 3/8"  
Modular size: 42,69 x 28,44 cm |  
16 13/16" x 11 3/16"



HYPNOTIC 1

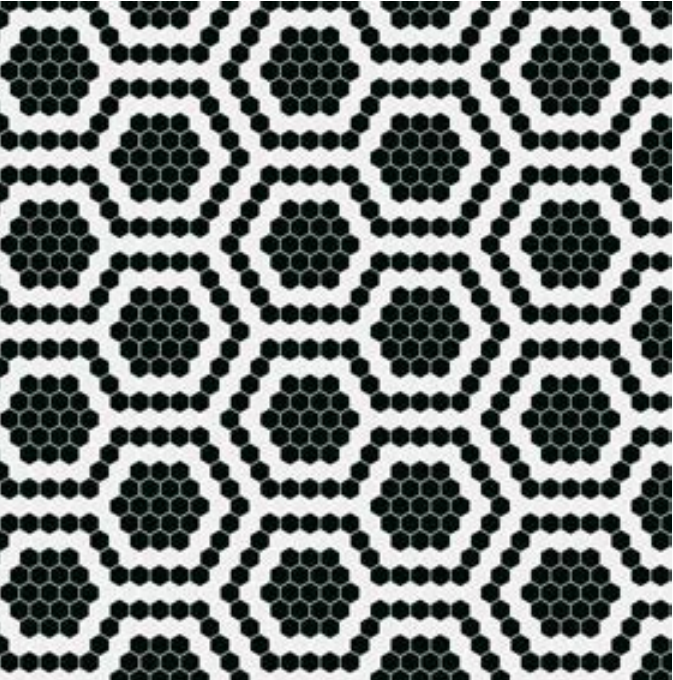


+ Bianco Assoluto

160

208

HYPNOTIC 2

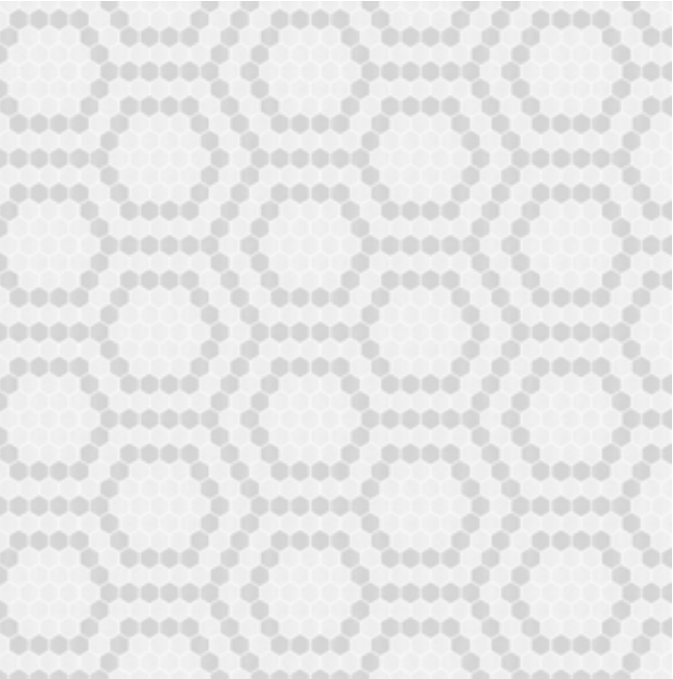


+ Bianco Assoluto

160

208

HYPNOTIC 3



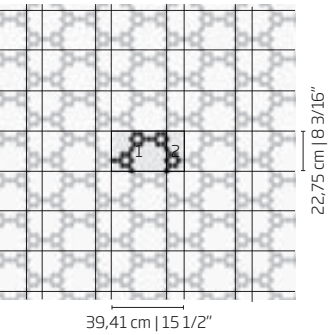
+ Titanio

150

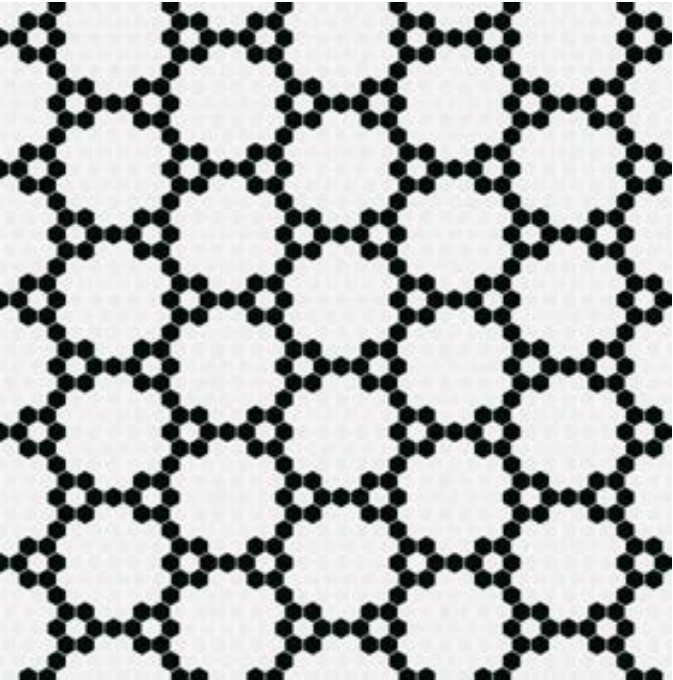
160

FROST

Hexagonal mosaic 3 x 3,5 cm | 1 3/16" x 1 3/8"  
Modular size: 39,41 x 22,75 cm | 15 1/2" x 8 3/16"



FROST 1



+ Bianco Assoluto

160

208

FROST 2

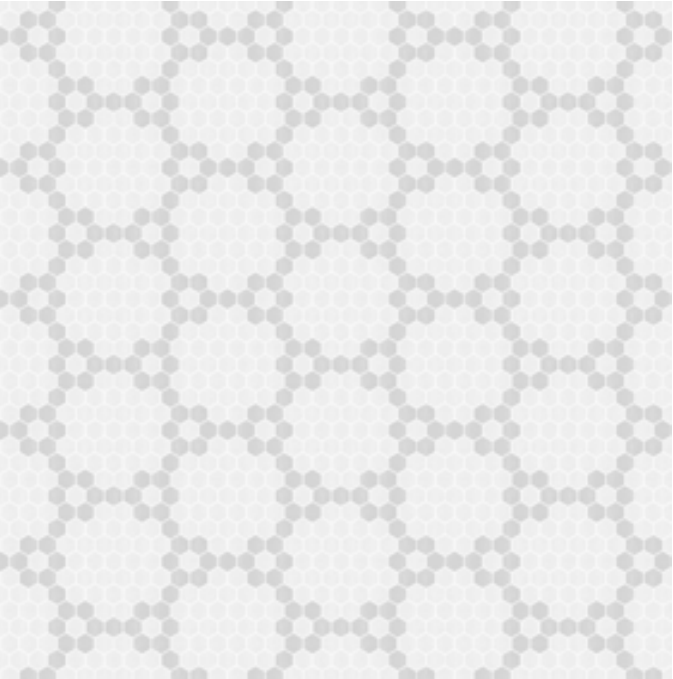


+ Bianco Assoluto

160

208

FROST 3



+ Titanio

150

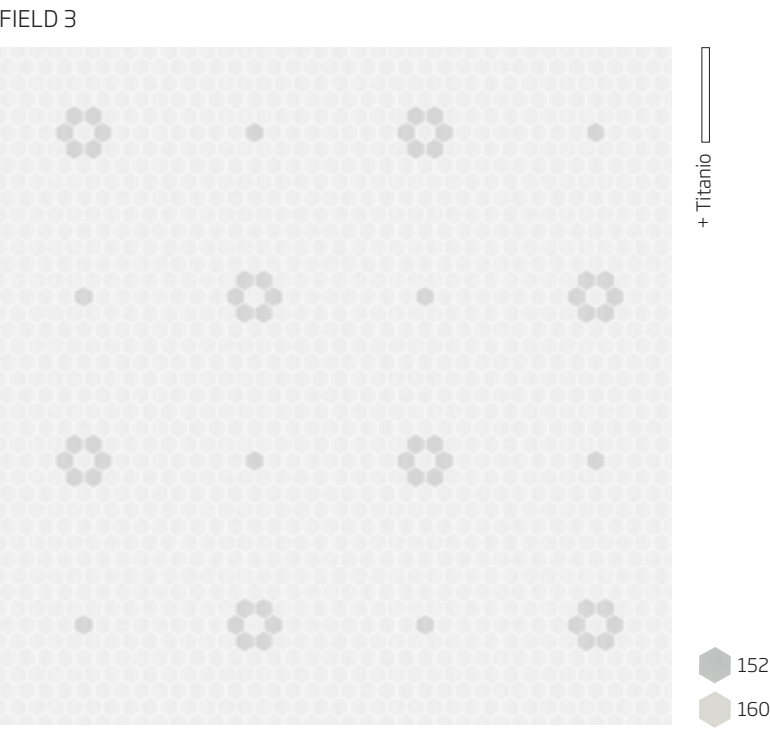
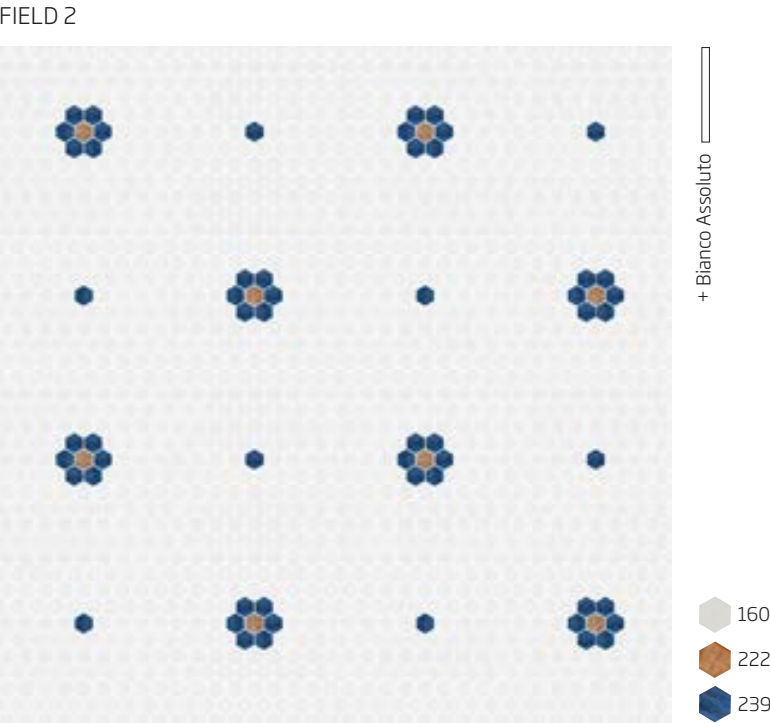
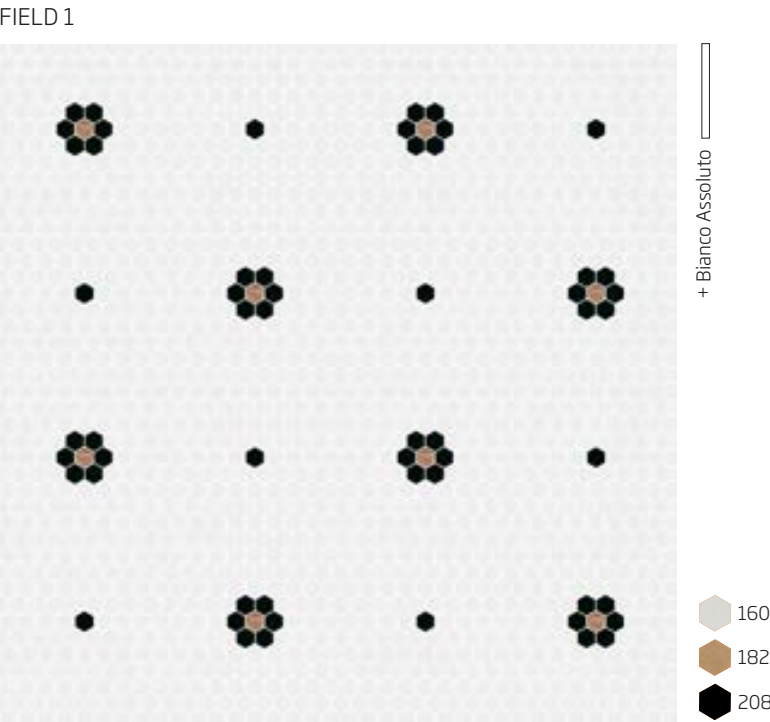
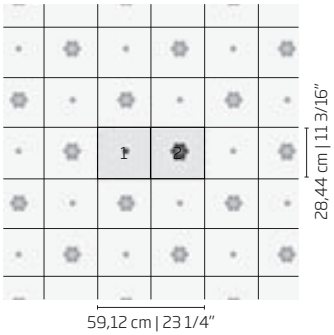
160



FIELD

Hexagonal mosaic 3 x 3,5 cm | 1 3/16" x 1 3/8"

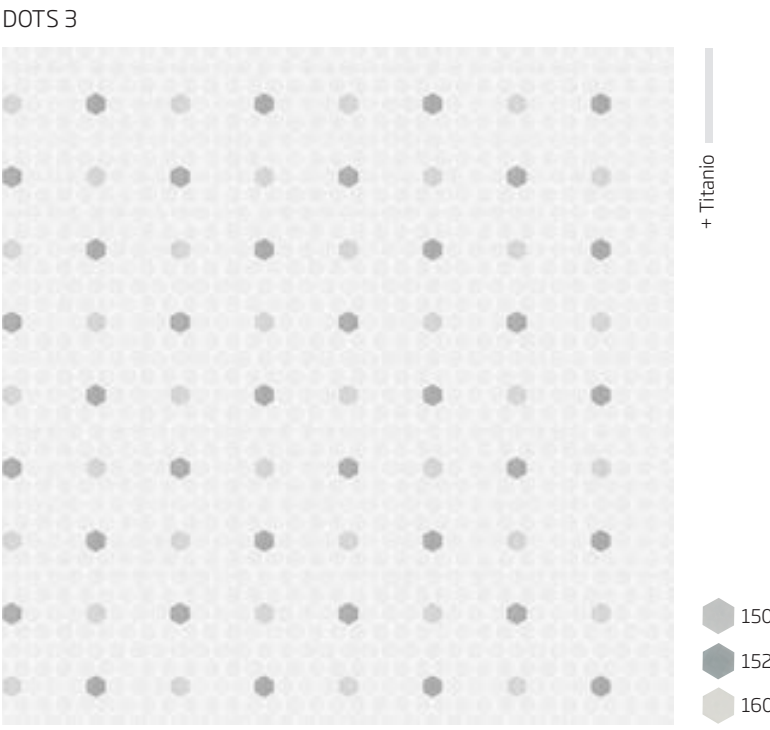
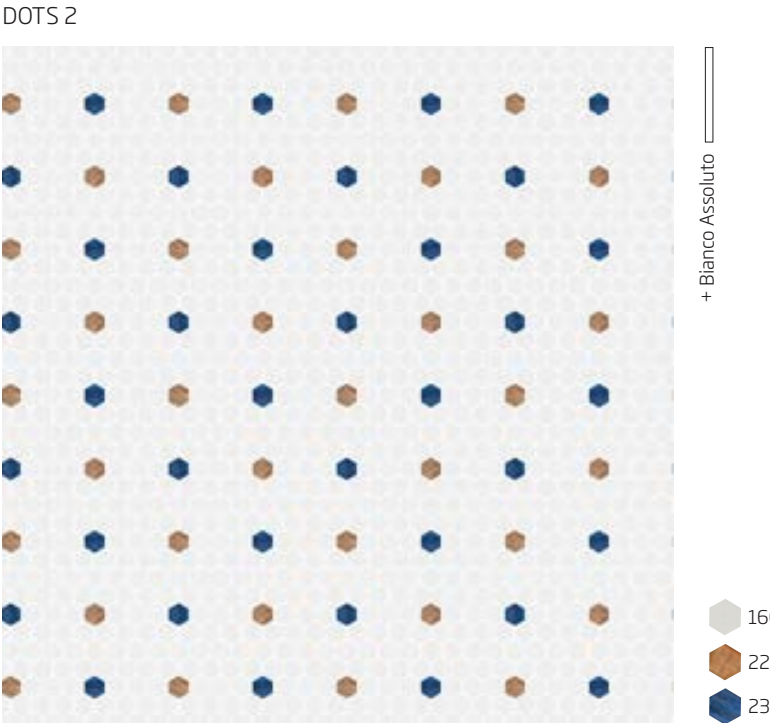
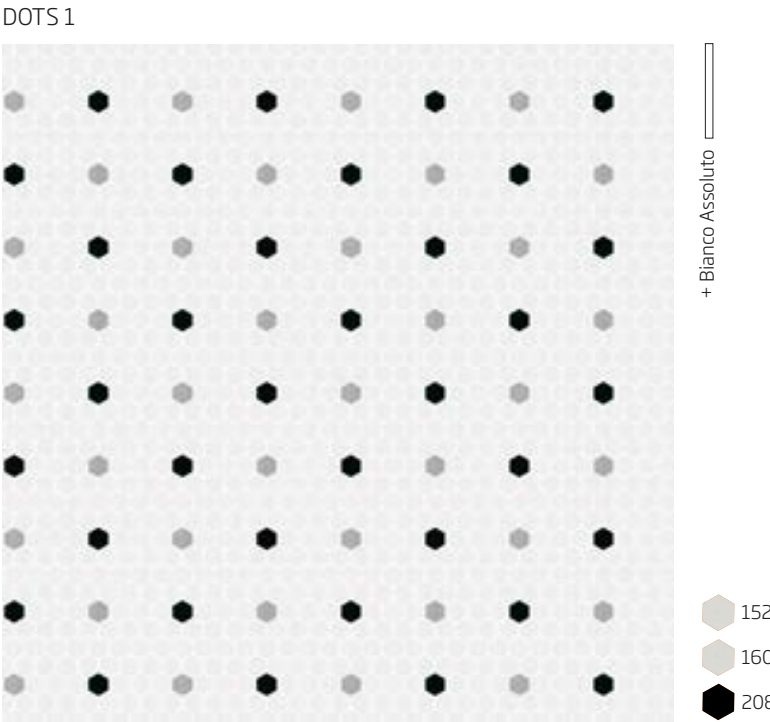
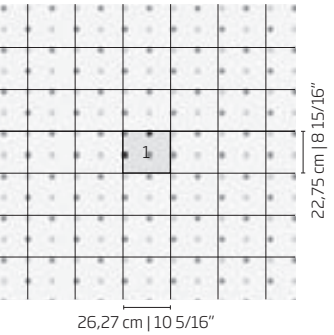
Modular size: 59,12 x 28,44 cm | 23 1/4" x 11 3/16"



DOTS

Hexagonal mosaic 3 x 3,5 cm | 1 3/16" x 1 3/8"

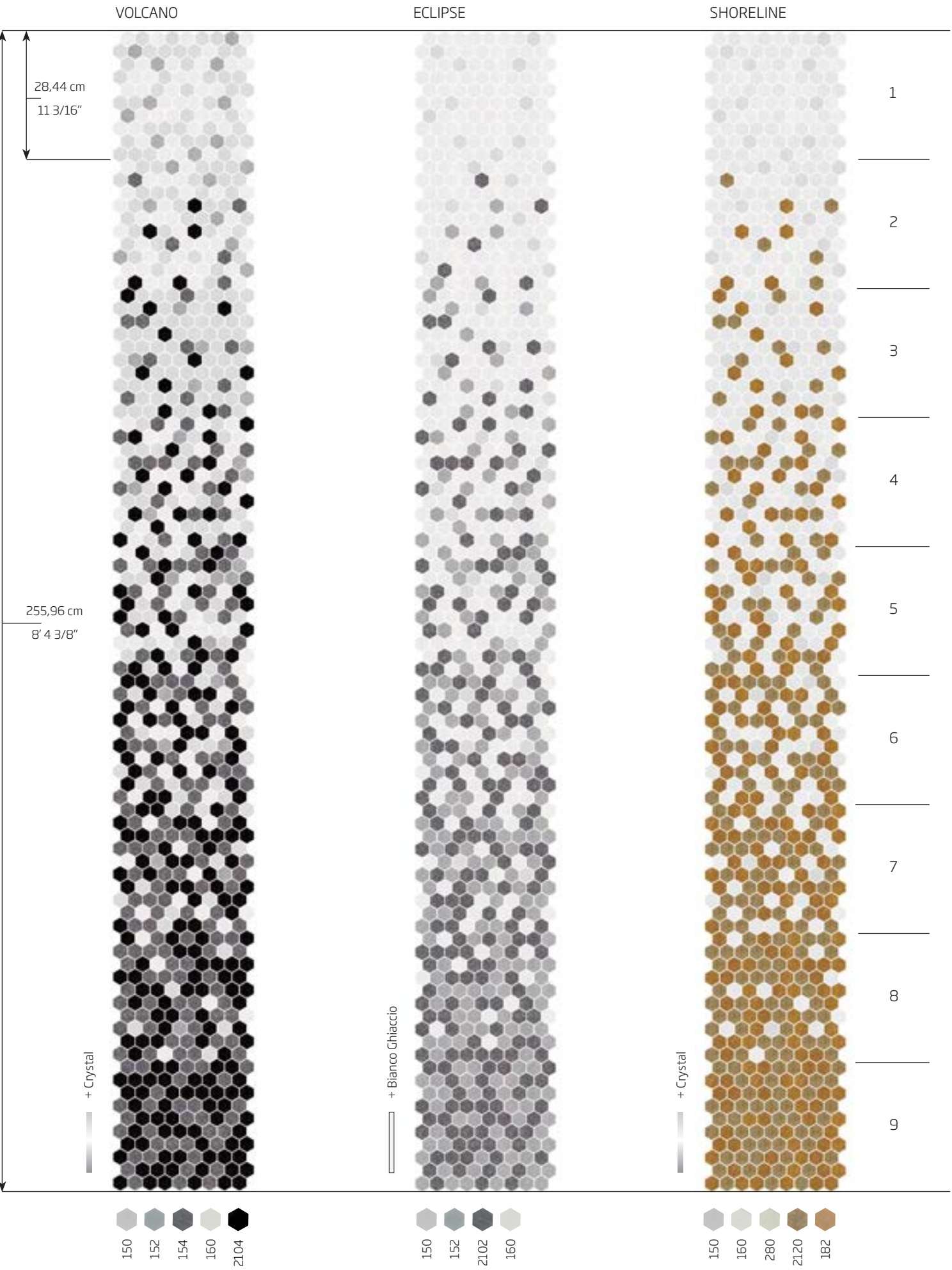
Modular size: 26,27 x 22,75 cm | 10 5/16" x 8 15/16"





HEXAGONAL SHADING BLENDS

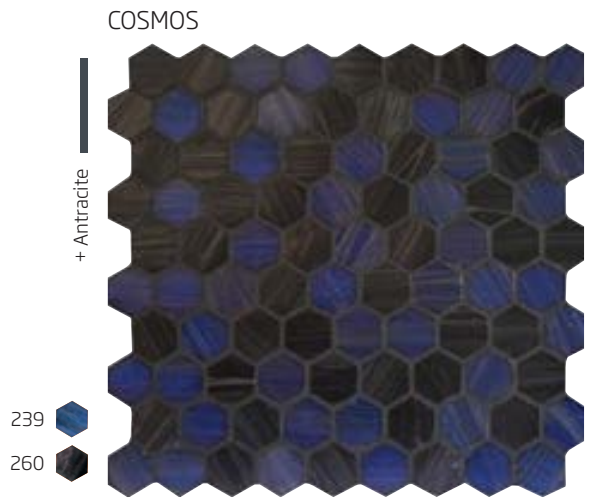
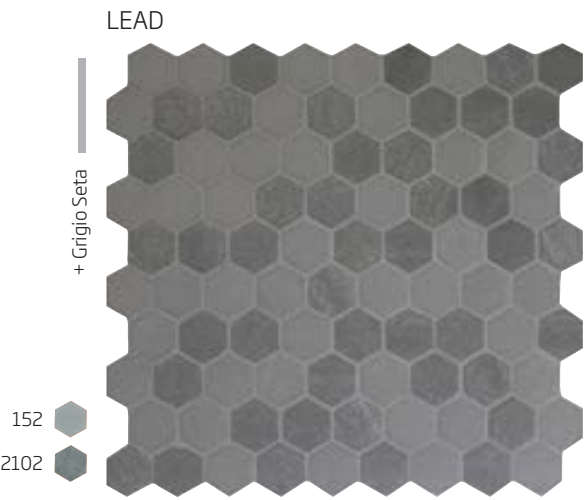
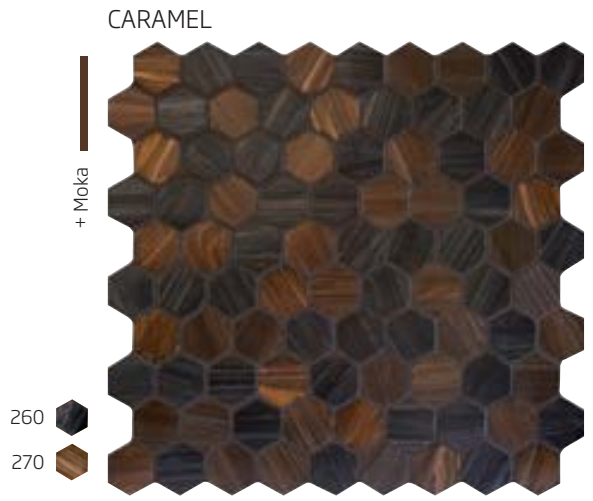
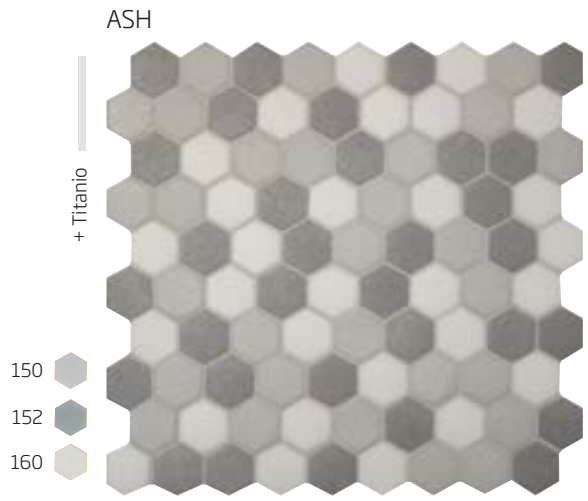
Hexagonal mosaic 3 x 3,5 cm | 1 3/16" x 1 3/8"



HEXAGONAL MIXES

Hexagonal mosaic 3 x 3,5 cm | 1 3/16" x 1 3/8"

Module size  
29,6 x 28,4 cm  
11 3/8" x 11 3/16"












VITREO, BRILLANTE, SHINING, FEEL, AUREO, KARMA  
WEIGHT AND DIMENSIONS | 1 x 1 cm | 3/8" x 3/8"  
TABELLA MISURE E PESI | TABLEAU DES POIDS ET DIMENSIONS |  
GRÖßE UND GEWICHTE | TABLA DE MEDIDAS Y PESOS | РАЗМЕРЫ И ВЕС

SIZE FORMATO FORMAT FORMAT TAMAÑO РАЗМЕР	1 x 1 cm   3/8" x 3/8"
THICKNESS SPESSORE EPAISSEUR STÄRKE ESPESOR ТОЛЩИНА	~ 4 mm   5/32"
JOINT GIUNTO JOINT ABMESSUNG DER FUGE JUNTA ШОВ	~ 1 mm   2/48"
WEIGHT PESO POIDS GEWICHT PESO ВЕС	~7 kg/m²   1.6 lbs/SQF
Hand cut   Tagliato a mano   Coupé à la main   Handgeschnitten Cortado a mano   наколотые вручную  Data are indicative only as it is a hand-cut product. I dati sono indicativi dal momento che si tratta di un prodotto artigianale. Comme il s'agit d'un produit artisanal, ces données n'ont qu'une valeur indicative. Da es sich um handwerkliche Produkte handelt, sind die obenewährnten Angaben als Richtwerte zu betrachten. Los datos son indicativos por tratarse de un producto artesanal. Материал ручной работы, поэтому данные приблизительные.	

TEST ASTM

TEST PERFORMED AND REQUIREMENTS	CONCLUSIONS
Range of thickness (ASTM C499)	passes
Facial dimensions (ASTM C499)	passes
Wedging (ASTM C502)	passes
Water absorption (ASTM C373)	passes
Thermal shocks (ASTM C484)	passes
Bond Strenght (ASTM C482)	passes
Crazing (ASTM C424)	passes

TEST DATA  
CARATTERISTICHE TECNICHE | CARACTÉRISTIQUES TECHNIQUES |  
TECHNISCHE EIGENSCHAFTEN | CARACTERÍSTICAS TÉCNICAS |  
ТЕХНИЧЕСКИЙ РАЗДЕЛ

	UNI EN ISO 10545 (13)		
	RESISTANCE TO CHEMICAL AGENTS RESISTENZA AGLI AGENTI CHIMICI RESISTANCE AUX PRODUITS CHIMIQUES SÄURE- UND LAUGENBESTÄNDIGKEIT RESISTENCIA A LOS AGENTES QUÍMICOS УСТОЙЧИВОСТЬ К ВОЗДЕЙСТВИЮ КИСЛОТ	resistant resistente résistant beständig resistente устойчива	
	UNI EN ISO 10545 (9)		
	RESISTANCE TO THERMAL SHOCKS RESISTENZA AGLI SBALZI TERMICI RESISTANCE AUX CHOCS THERMIQUES TEMPERATURWECHSELBESTÄNDIGKEIT RESISTENCIA A LOS CAMBIOS DE TEMPERATURA УСТОЙЧИВОСТЬ К ПЕРЕПАДАМ ТЕМПЕРАТУРЫ	resistant resistente résistant beständig resistente устойчива	
	UNI EN ISO 10545 (3)		
	WATER ABSORPTION ASSORBIMENTO ACQUA ABSORPTION D'EAU WASSERAUFNAHME ABSORCION DE AGUA ВОДОПОГЛОЩЕНИЕ	none nullo nulle null nula ноль	
	DIN 51094		
	COLOURS RESISTANCE TO FADING RESISTENZA DEI COLORI ALLA LUCE RESISTANCE DES COULEURS A LA LUMIERE FARBBESTÄNDIGKEIT RESISTENCIA DE LOS COLORES A LA LUZ УСТОЙЧИВОСТЬ К СВЕТУ	resistant resistente résistant beständig resistente устойчива	
	UNI EN ISO 10545 (12)		
	FROST RESISTANCE RESISTENZA AL GELO RESISTANCE AU GEL FROSTBESTÄNDIGKEIT RESISTENCIA AL HIELO МОРОЗОУСТОЙЧИВОСТЬ	resistant resistente résistant beständig resistente устойчива	
	DIN 51097		
	SLIP RESISTANCE ON BARE FEET RESISTENZA ALLA SCIVOLOSITÀ A PIEDI NUDI RESISTANCE AU GLISSEMENT A PIEDS NUS RUTSCHFESTIGKEIT BARFUSS RESISTENCIA ANTIDESLIZANTE CON PIES DESNUDOS УСТОЙЧИВОСТЬ К СКОЛЬЖЕНИЮ, БОСИКОМ	class classe classe Klasse clase класс	C C C C C C
	DIN 51130		
	SLIP RESISTANCE WITH SHOES RESISTENZA ALLA SCIVOLOSITÀ A PIEDI CALZATI RESISTANCE AU GLISSEMENT A PIEDS CHAUSSES RUTSCHFESTIGKEIT MIT SCHUHEN RESISTENCIA ANTIDESLIZANTE CON PIES CALZADOS УСТОЙЧИВОСТЬ К СКОЛЬЖЕНИЮ, В ОБУВИ	R9	








HEXAGONAL  
WEIGHT AND DIMENSIONS  
TABELLA MISURE E PESI | TABLEAU DES POIDS ET DIMENSIONS |  
GRÖßE UND GEWICHTE | TABLA DE MEDIDAS Y PESOS | РАЗМЕРЫ И ВЕС

SIZE FORMATO FORMAT FORMAT TAMAÑO РАЗМЕР	35 x 30 mm   1 3/16" x 1 3/8" (35,61 x 30,84 mm)
THICKNESS SPESSORE EPAISSEUR STÄRKE ESPESOR ТОЛЩИНА	~ 5 mm   3/16"
JOINT GIUNTO JOINT ABMESSUNG DER FUGE JUNTA ШОВ	~ 2 mm   5/64"
WEIGHT PESO POIDS GEWICHT PESO ВЕС	~ 9 Kg/m²   1.84 lbs/SQF

TEST ASTM

TEST PERFORMED AND REQUIREMENTS	CONCLUSIONS
Range of thickness (ASTM C499)	passes
Facial dimensions (ASTM C499)	passes
Wedging (ASTM C502)	passes
Water absorption (ASTM C373)	passes
Thermal shocks (ASTM C484)	passes
Bond Strenght (ASTM C482)	passes
Crazing (ASTM C424)	passes

TEST DATA  
CARATTERISTICHE TECNICHE | CARACTÉRISTIQUES TECHNIQUES |  
TECHNISCHE EIGENSCHAFTEN | CARACTERÍSTICAS TÉCNICAS |  
ТЕХНИЧЕСКИЙ РАЗДЕЛ

	UNI EN ISO 10545 (13)		
	RESISTANCE TO CHEMICAL AGENTS RESISTENZA AGLI AGENTI CHIMICI RESISTANCE AUX PRODUITS CHIMIQUES SÄURE- UND LAUGENBESTÄNDIGKEIT RESISTENCIA A LOS AGENTES QUÍMICOS УСТОЙЧИВОСТЬ К ВОЗДЕЙСТВИЮ КИСЛОТ	resistant resistente résistant beständig resistente устойчива	
	UNI EN ISO 10545 (9)		
	RESISTANCE TO THERMAL SHOCKS RESISTENZA AGLI SBALZI TERMICI RESISTANCE AUX CHOCS THERMIQUES TEMPERATURWECHSELBESTÄNDIGKEIT RESISTENCIA A LOS CAMBIOS DE TEMPERATURA УСТОЙЧИВОСТЬ К ПЕРЕПАДАМ ТЕМПЕРАТУРЫ	resistant resistente résistant beständig resistente устойчива	
	UNI EN ISO 10545 (3)		
	WATER ABSORPTION ASSORBIMENTO ACQUA ABSORPTION D'EAU WASSERAUFNAHME ABSORCION DE AGUA ВОДОПОГЛОЩЕНИЕ	none nullo nulle null nula ноль	
	DIN 51094		
	COLOURS RESISTANCE TO FADING RESISTENZA DEI COLORI ALLA LUCE RESISTANCE DES COULEURS A LA LUMIERE FARBBESTÄNDIGKEIT RESISTENCIA DE LOS COLORES A LA LUZ УСТОЙЧИВОСТЬ К СВЕТУ	resistant resistente résistant beständig resistente устойчива	
	UNI EN ISO 10545 (12)		
	FROST RESISTANCE RESISTENZA AL GELO RESISTANCE AU GEL FROSTBESTÄNDIGKEIT RESISTENCIA AL HIELO МОРОЗОУСТОЙЧИВОСТЬ	resistant resistente résistant beständig resistente устойчива	
	DIN 51097		
	SLIP RESISTANCE ON BARE FEET RESISTENZA ALLA SCIVOLOSITÀ A PIEDI NUDI RESISTANCE AU GLISSEMENT A PIEDS NUS RUTSCHFESTIGKEIT BARFUSS RESISTENCIA ANTIDESLIZANTE CON PIES DESNUDOS УСТОЙЧИВОСТЬ К СКОЛЬЖЕНИЮ, БОСИКОМ	class classe classe Klasse clase класс	B B B B B B
	DIN 51130		
	SLIP RESISTANCE WITH SHOES RESISTENZA ALLA SCIVOLOSITÀ A PIEDI CALZATI RESISTANCE AU GLISSEMENT A PIEDS CHAUSSES RUTSCHFESTIGKEIT MIT SCHUHEN RESISTENCIA ANTIDESLIZANTE CON PIES CALZADOS УСТОЙЧИВОСТЬ К СКОЛЬЖЕНИЮ, В ОБУВИ	R9	



ITALY  
Piazzale Fraccon 8  
36100 Vicenza | Italy  
phone +39 0444 338 711  
info-it@trend-group.com

USA  
1565 NW 36th Street  
Miami, FL 33142 USA  
phone +1 863 655 0164  
toll free +1 866 508 7363  
info-us@trend-group.com

UK  
Unit 28 Decimus Park,  
Kingstanding Way | Tunbridge  
Wells | Kent TN2 3GP | UK  
call 08700 427 450  
phone +44 01 892 509 690  
info-gb@trend-group.com

AUSTRALIA  
Unit 16/167 Prospect Hwy  
Seven Hills, 2147  
Sydney NSW Australia  
phone +61 02 8817 5500  
info-au@trend-group.com

BRAZIL  
Calçada das Violetas, 225  
Alphaville Comercial,  
Barueri | São Paulo,  
06453-003 | Brazil  
phone: +55 11 2424 6137  
info-br@trend-group.com

UNITED ARAB EMIRATES  
402, Building 1-B  
Dubai Design District -D3, UAE  
P.O. Box 309127  
phone +971 44 30 9424  
info-ae@trend-group.com

trend-group.com

April 2018 | Editor: Federica Bisazza  
Art Designers: Yasmine Benetti | Paola Mosele | Raffaella Salata | Silvia Signorin | Alice Trentin  
Graphic Designer: Giulia Cignacco | Photo: Federico Sanson

Colors in glass and ink are different, so the product shades as reproduced here are intended for reference only.



